



**OPERATOR'S MANUAL
SET-UP INSTRUCTIONS
&
PARTS LIST**

**12 & 16 ROW CROSS AUGERS
FOR KINZE PLANTERS**



MARKET FARM EQUIPMENT LIMITED, R.R.#1 DASHWOOD, ONTARIO, CANADA

TEL# 519-238-2301 FAX# 519-238-6044 E-MAIL: mfeltd@execulink.com

www.marketfarmequipment.com

"SERVING THE FARM INDUSTRY SINCE 1962"

WARRANTY PROCEDURE

MARKET FARM EQUIPMENT WARRANTS THEIR MANUFACTURED PRODUCTS TO BE FREE FROM DEFECTS IN MATERIAL AND WORKMANSHIP FOR A PERIOD OF ONE (1) YEAR AFTER THE DATE OF PURCHASE TO THE FIRST END USER AND IS SUBJECT TO THE FOLLOWING CONDITIONS.

- 1. Damage caused by improper use, negligence, or operation beyond rated capacity, improper set-up, adjustment, or any unauthorized modifications made by the dealer or customer, shall void this warranty.**
- 2. Notification of damage or warranty claims must be submitted to Market Farm Equipment (M.F.E.) within seven (7) days of the date of failure.**
- 3. All defective parts must be made available by the dealer, for inspection by M.F.E. if required, and returned at the dealer's expense.**
- 4. All warranty claims must be approved by M.F.E.**
- 5. The labour and freight required to replace defective parts is not reimbursable.**
- 6. Exchange, credit or warranty status will be based on the results of the inspection of damaged items by the manufacturer.**
- 7. Credit will be issued if and when the warranty claim is approved and MUST NOT be deducted from the account by the dealer.**
- 8. Products and/or parts not manufactured by M.F.E. are subject to their own manufacturer's warranty conditions.**

WARRANTY CONSIDERATION IS ONLY VALID WHEN THE WARRANTY REGISTRATION FORM HAS BEEN RECEIVED BY MARKET FARM EQUIPMENT.

WARRANTY REGISTRATION

MARKET FARM EQUIPMENT LIMITED
71796A BLUEWATER HIGHWAY, ONTARIO, CANADA, N0M 1N0
Fax: 519-238-6044 E-mail: mfeltd@execulink.com

Purchaser's warranty protection on this equipment is valid only when this registration form is completed by the purchaser and returned to Market Farm Equipment Limited.

Date of purchase: _____

Type of equipment: _____

Model number: _____ **Serial number:** _____

PURCHASER'S SIGNATURE INDICATES:

- Acceptance of equipment, fully assembled () unassembled ()
- Receipt of operator's manual
- Clear understanding of warranty
- Receipt of instructions on special safety equipment available
- Receipt of instructions on safe and proper operating procedures

PURCHASER:

Name: _____

Signature: _____

Mailing Address: _____

Prov./State: _____ **Postal/Zip Code:** _____

Telephone number: _____

Purchased from: _____

THIS WARRANTY MUST BE VALIDATED BY THE MANUFACTURER

It is valid only when a copy of the registration has been received by the manufacturer at address shown.

MARKET FARM EQUIPMENT LIMITED

EXPRESS WARRANTY

Market Farm Equipment Limited warrants against defects in construction and materials for a period of ONE year. We reserve the right to inspect and decide whether material or construction was faulty, or whether abuse or accident voids our guarantee.

This warranty does not cover a component which fails, malfunctions or is damaged as a result of (I) improper modification or repair, (II) accident, abuse or improper use, including loading beyond the specified maximum weights and requirements (III) improper or insufficient maintenance, or (IV) normal wear and tear.

THIS WARRANTY IS EXPRESSLY IN LIEU OF ALL OTHER WARRANTIES OR CONDITIONS, EXPRESS, IMPLIED OR STATUTORY, INCLUDING ANY IMPLIED WARRANTY OF MERCHANTABILITY OR FITNESS FOR A PARTICULAR PURPOSE.

In no way shall Market Farm Equipment Limited be liable for special, direct, incidental or consequential damages of any kind, including but not limited to labour charges.

The exclusive remedy under this warranty shall be repair or replacement of the defective component at Market Farm Equipment Limited's option. This is the entire agreement between Market Farm Equipment Limited and the owner about warranty. NO M.F.E. Ltd. employee or dealer is authorized to make additional warranty on behalf of Market Farm Equipment Limited.

(Fill in the following for future reference)

Serial number:_____

Date of purchase:_____

Purchased from:_____

SAFETY INFORMATION

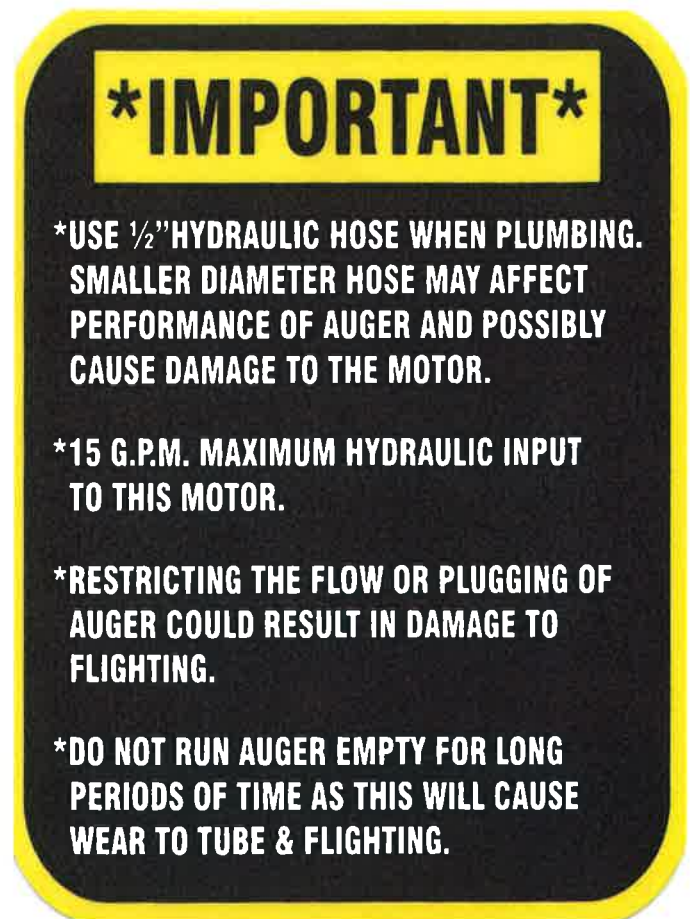
- Before using auger READ and UNDERSTAND SAFETY INSTRUCTIONS.
- After hydraulic lines are connected, run auger empty to ensure the flighting is rotating in the proper direction. (if ran backwards, damage may occur)
- Auger should be empty when moving or transporting.
- Hydraulic oil leaking under pressure can cause injury. Make sure all hydraulic connections are tight. Before disconnecting hydraulic lines, relieve pressure.
- Do not adjust, clean or service auger while it is running.
- Keep all safety shields in place. Replace any safety decals that become lost or damaged.
- Do not operate the auger in a manner that it was not intended for.
- When transporting, always keep auger in its lowest position.

HYDRAULIC SYSTEM OPERATING RESTRICTIONS

MAXIMUM FLOW – 20 G.P.M. MAXIMUM PRESSURE – 2500 P.S.I.

MAXIMUM FLOW AND MAXIMUM PRESSURE conditions MUST NOT occur simultaneously. Damage will occur and warranty will be void. Use only ½" hydraulic hose when plumbing. Smaller hose will create heat that will burn out the hydraulic motor and warranty will be void.

Do not tee into hydraulic lift cylinders on planters or drills.



KINZE 8 ROW WIDE, 12 ROW NARROW & 16 ROW NARROW

CROSSAUGER MOUNTING INSTRUCTIONS:

1: Remove all sections of flighting from the tubes.

2: Centre section first. Mount offset posts (#13) so that the posts are close to the hinges on planter. The posts should be mounted on the front of the 7" frame with the offset going towards the rear (back over the frame). Do not tighten u-bolts yet. Measure distance between the hinges on the centre section of the auger (centre to centre on the holes). This should be the centre to centre measurements on the 2 offset posts. Adjust posts and lightly tighten u-bolts. Loosen 3/8" bolts in the straight cross arms (#10) and slide down the posts to approx. 4" above hopper lids (lightly tighten). Slide hinge mounting brackets (#7) onto the cross arms (#10) and centre over drops. Mount center section of auger to hinge brackets (#7) using 1/2" bolts but do not tighten. Attach 7" flex hose (#50) to each end of the centre section using 2 of the 7" hose clamps (#51).

3: 1st section next. Position 1st straight post (#12) between the 1st and 2nd fertilizer hoppers. The 2 straight posts should be mounted on the rear of the 7" frame. Loosen the 3/8" bolts in the swing cross arm (#48) and slide down the straight post to approx. 4" above hopper lids (lightly tighten). Loosen collars to allow clamp band to be centered over the fertilizer hoppers then re-tighten collars. Remove top half of the round tube clamp band (#45) and set 1st section of the cross auger in the lower half. Re-attach top clamp band but do not tighten. Mount to the hinge mounting bracket (#7) using the 1/2" bolts that are holding the centre section in place. Tighten 1/2" bolts on the hinge mounting bracket (#7).

4: Mount 3rd section the same way as the 1st. Post position will be between the last 2 fertilizer hoppers.

5: The space between the tube sections should be app. 1". Cover with flex hose (#50) and secure to the outer tubes using the 7" hose clamps (#51).

6: Straighten centre posts and tighten u-bolts. Straighten outside posts making sure that the swing cross arm is straight up and down and then tighten u-bolts and clamp bands.

7: Adjust height of auger so that the bottom of the drops (#3) are 4" above lids on the fertilizer hoppers. This is done by raising or lowering the cross arm positions.

8: Remove plastic end cap (#11). Slide 1st section of flighting into the end of the auger tube. Couple 2nd section of flighting to the 1st using the HD U-Joint (#44). The ends are color coded. Continue to slide the flighting into the tube then connect the 3rd section of flighting to the 2nd. Slide flighting all the way in and attach to the motor. Replace the plastic end cap (#11).

9: Plumb hydraulics using 1/2" hose with N.P.T. ends. DO NOT USE O-RING FITTINGS

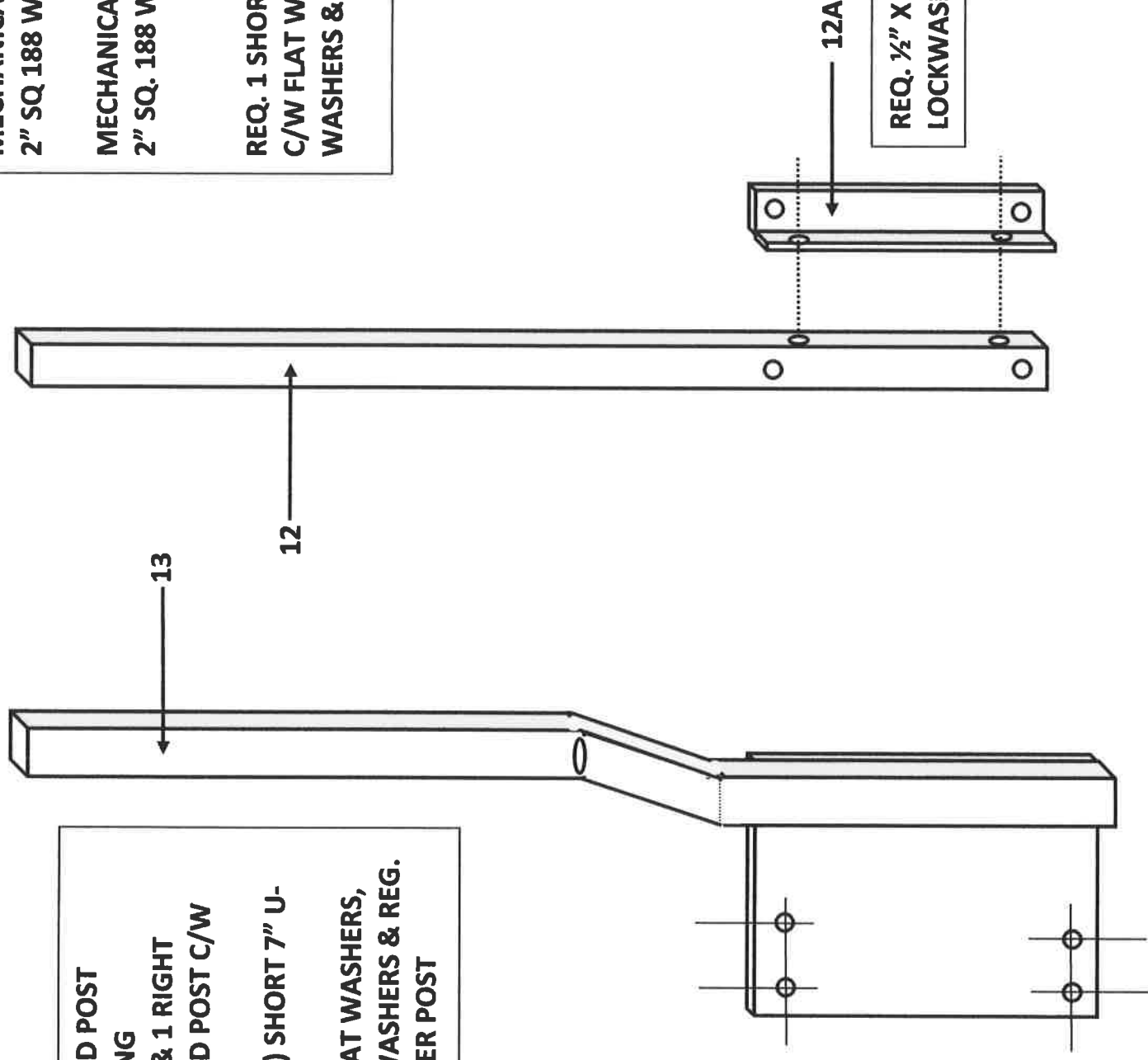
KINZE HARDWARE (POSTS)

FORMED POST
60" LONG
1 LEFT & 1 RIGHT
FORMED POST C/W
PLATE
(REQ. 2) SHORT 7" U-
BOLTS
C/W FLAT WASHERS,
LOCK WASHERS & REG.
NUTS PER POST

MECHANICAL/EDGE-VAC (NO EXT.)
2" SQ 188 WALL 60" LONG

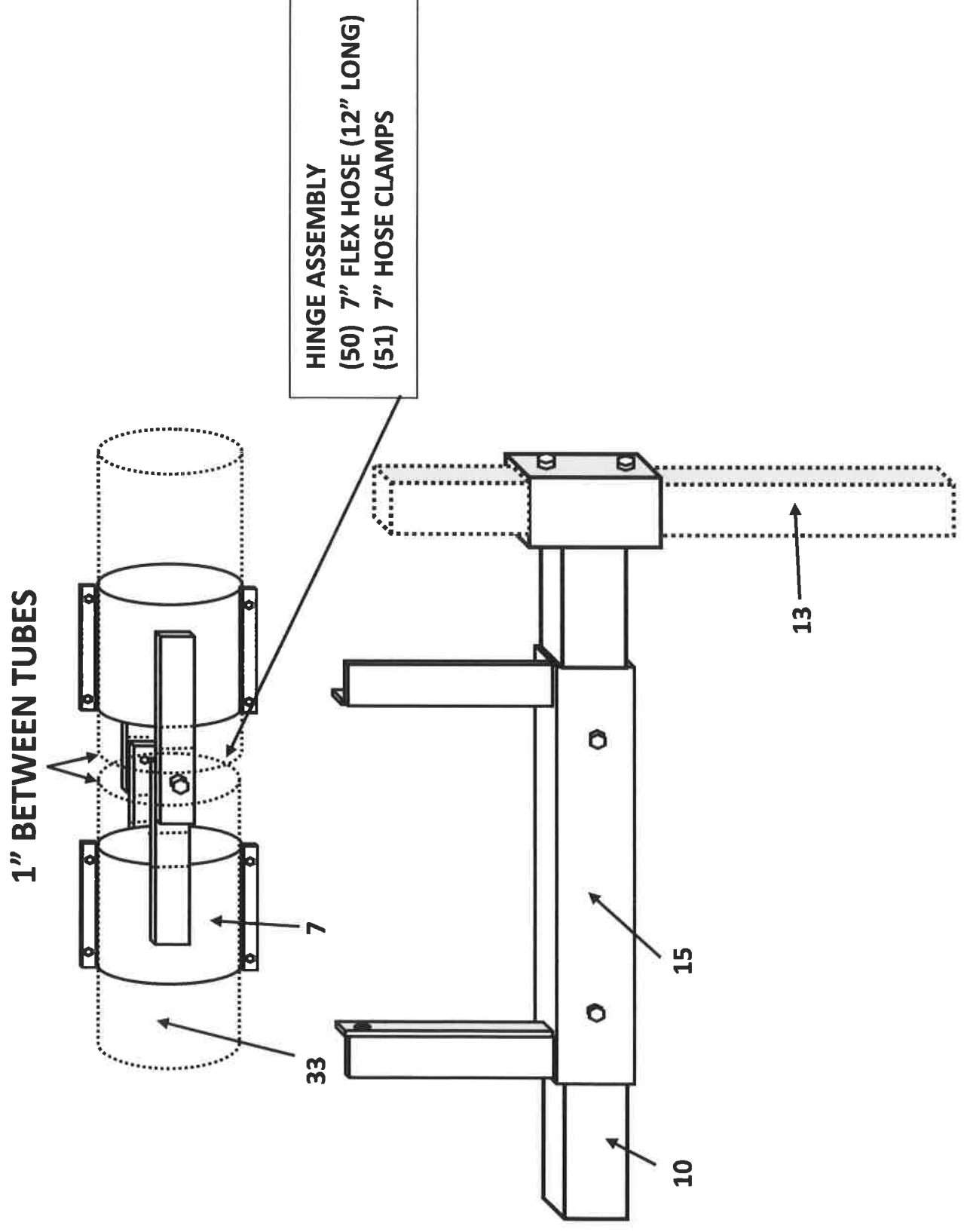
MECHANICAL/EDGE-VAC (EXT.)
2" SQ. 188 WALL 68" LONG

REQ. 1 SHORT & 1 LONG 7" U-BOLT
C/W FLAT WASHERS, LOCK
WASHERS & REG. NUTS PER POST

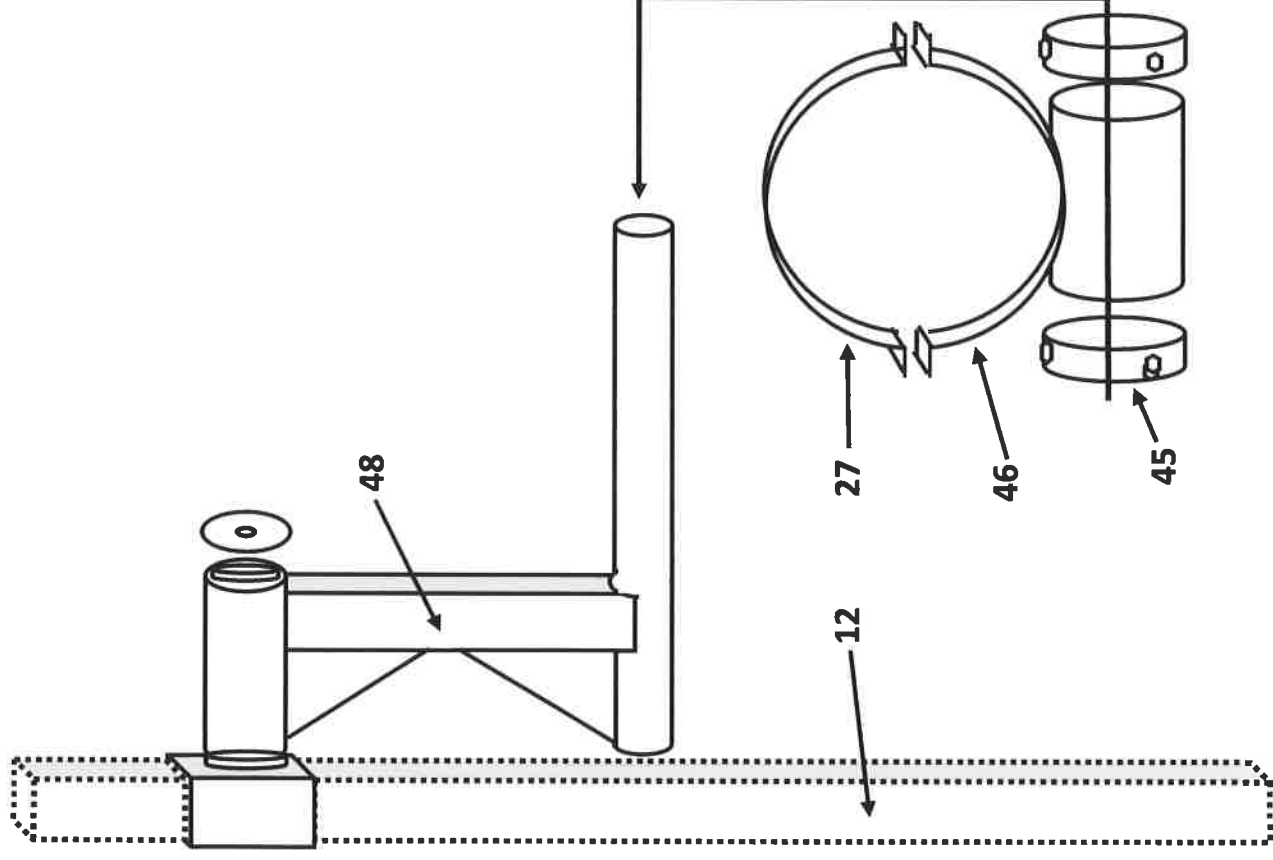


REQ. 1/2" X 3" BOLTS C/W
LOCKWASHERS & REG.

KINZE HARDWARE (HINGES)



KINZE HARDWARE (SWING ARMS)



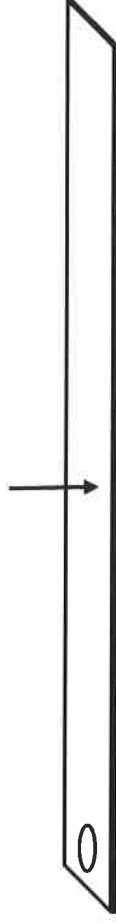
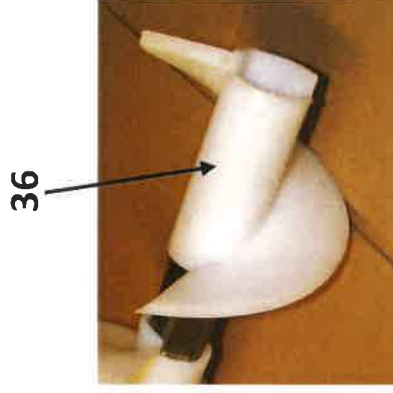
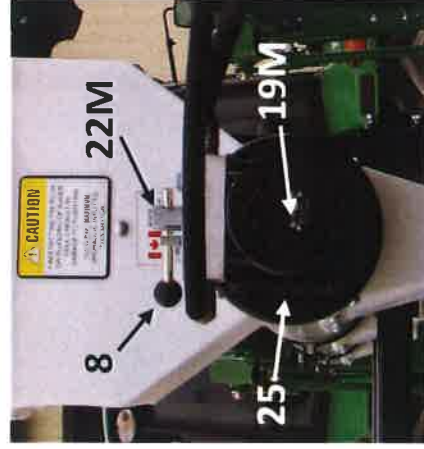
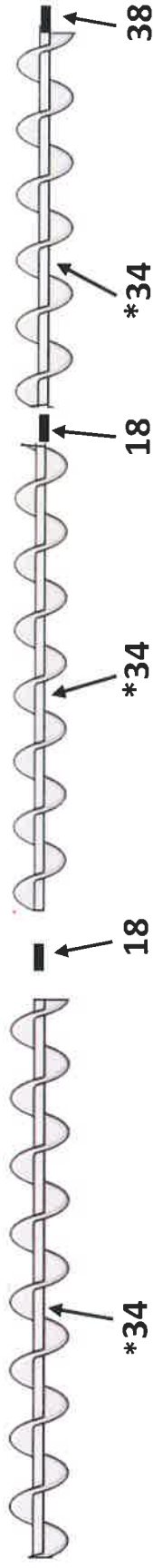
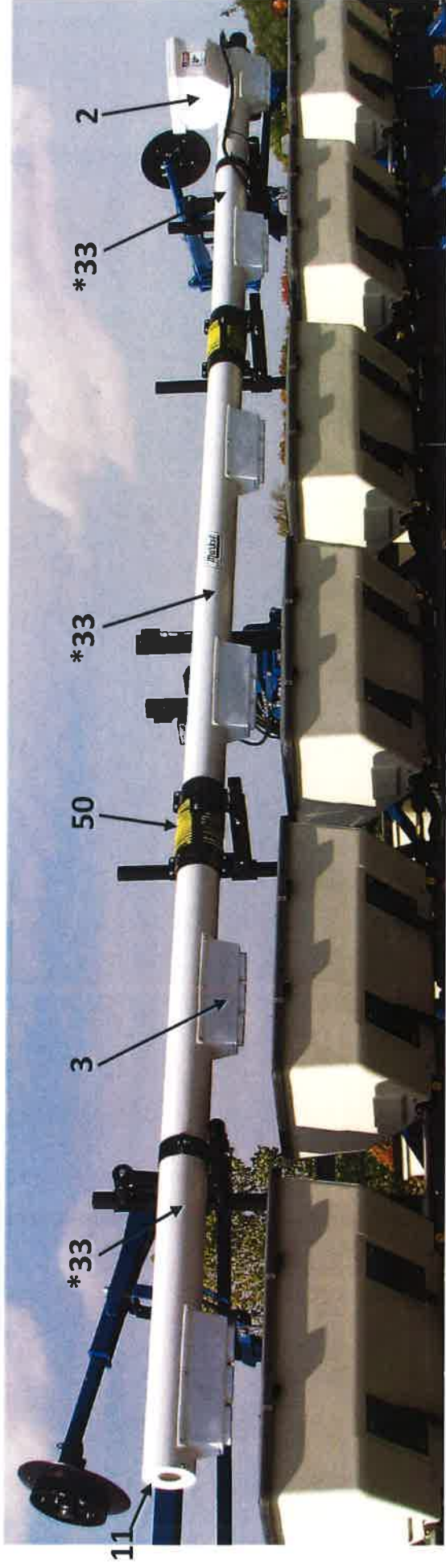
6" PLANTER CROSS AUGER PARTS LIST (KINZE)

REF #	PRO CD	DESCRIPTION
2	(195)	6" CROSS AUGER HOPPER & LID ASSEMBLY
3	(196)	6" PLASTIC DROP C/W 6 SCREWS
4	(197)	SHUT OFF SLIDE FOR 6" PLASTIC DROP
7	(1163)	HINGE ASSEMBLY
8	(581)	VALVE HANDLE C/W BLACK KNOB
10	(935)	REGULAR CROSS ARM
11	(398)	PLASTIC END CAP C/W OVERFLOW HOLE
12	(1690)	60" STRAIGHT POST (NO HOPPER EXTENSIONS)
12EXT	(1420)	68" STRAIGHT POST (WITH HOPPER EXTENSIONS)
12A	(1584)	ANGLE IRON POST SUPPORT
13	(1689)	60" FORMED POST C/W PLATE (SPECIFY LEFT OR RIGHT)
15	(1181)	HINGE MOUNTING BRACKET
18	(755)	HEAVY DUTY U-JOINT
19M	(395)	6 CUBIC INCH MOTOR (MANIFOLD MOUNT)
22M	(117)	VALVE ½" NPT (MANIFOLD MOUNT)
25	(198)	6" MOTOR PLATE
27	(181)	6" TOP CLAMP BAND FOR #46
33*	(193)	6" PVC TUBE (RAW)
34*	(153)	6" PLASTIC FLIGHTING (SPECIFY LENGTH)
36	(397)	PLASTIC MODULE SECTION
38	(402)	STAINLESS STEEL MOTOR COUPLER (6")
42	(1497)	7" U-BOLT (SHORT)
42A	(1496)	7" U-BOLT (LONG)
45	(1575)	SWING ARM COLLAR
46	(1182)	BOTTOM CLAMP BAND C/W ROUND PIPE
48	(1165)	SWING ARM ASSEMBLY
50	(163)	7" X 12" FLEX HOSE
51	(447)	7" HOSE CLAMP

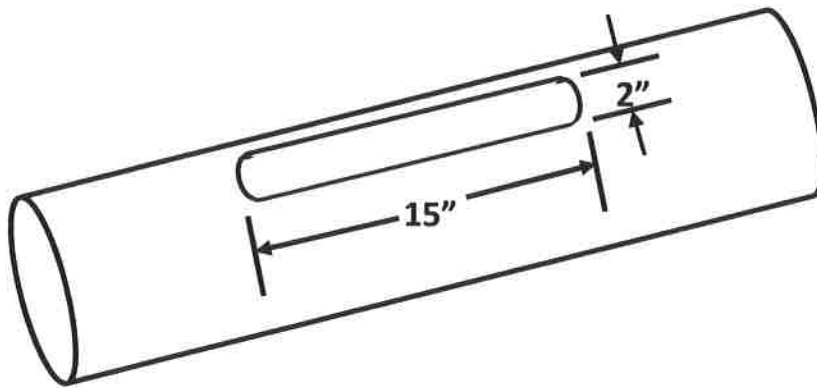
*** ALL NUTS & BOLTS SOLD SEPERATELY***

*SPECIFY LENGTHS (SERIAL # ON CROSS AUGER IF POSSIBLE)

12 & 16 ROW CROSS AUGER FOR KINZE PLANTERS



MOUNTING INSTRUCTIONS FOR CROSS AUGER DROPS



BEFORE CUTTING, REMOVE END BEARING/ OVERFLOW ENDCAP AND PLASTIC FLIGHTING.

DRILL A 3/8" PILOT HOLE AT THE END OF THE SLOT. USE A JIG SAW TO CUT SLOT OUT.

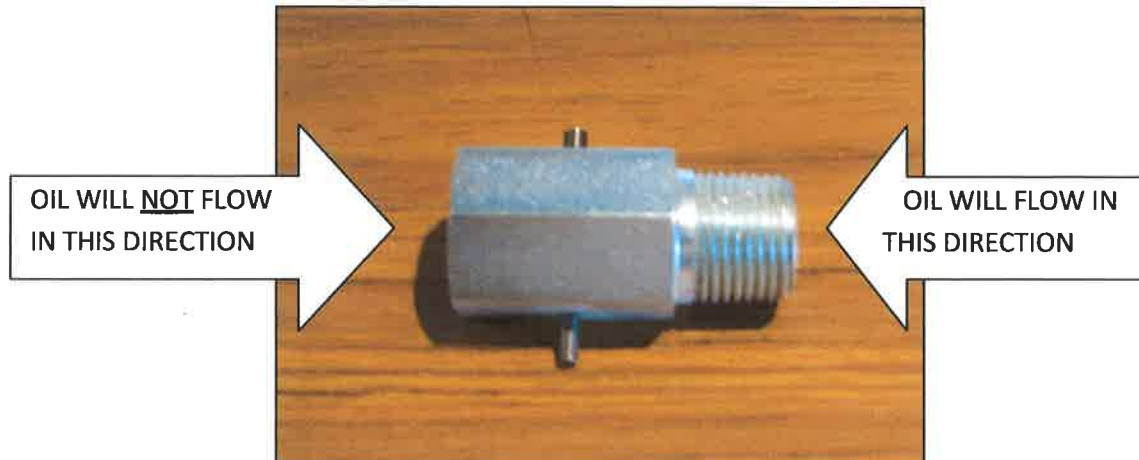
PLACE PLASTIC DROP OVER CUT OUT SLOT AND CENTER. DRILL (3) 1/8" HOLES ON END SIDE AND ATTACH USING 1/2" MACHINE SCREWS SUPPLIED

MAKE SURE DROPS ARE ALL STRAIGHT BEFORE ATTACHING.

OPTIONAL VALVES FOR HYDRAULIC AUGERS

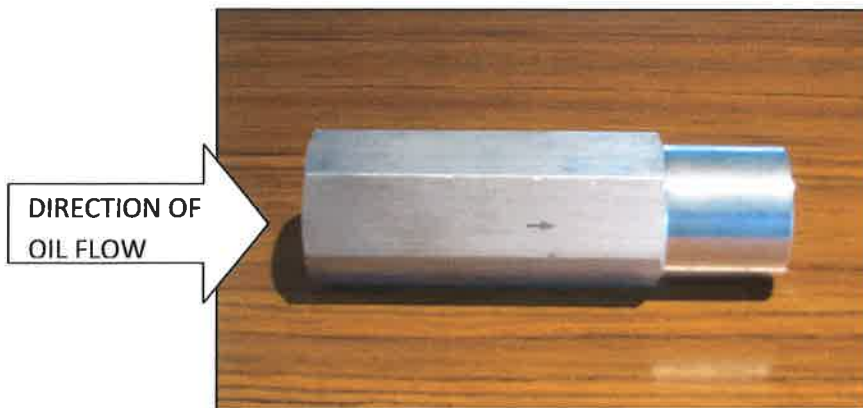
Note: These optional valves do not replace the shut-off valve on the auger.

A directional valve fitting can be installed to restrict the auger from running in the reverse direction. This valve should be installed on the return line, between the valve on motor and the tractor. Thread is $\frac{1}{2}$ " NPT. **RECOMMENDED FOR AUGERS THAT SHOULD NOT BE RUN IN REVERSE, AS IT MAY CAUSE DAMAGE TO THE FLIGHTING.**



An in-line, pressure compensated, nonadjustable flow regulator valve is available for CLOSED CENTER HYDRAULIC SYSTEMS. In the controlled direction, this regulator will maintain a constant flow rate of 10 GPM. This valve should be installed on the pressure line, between the tractor and the valve on motor. Thread is $\frac{3}{4}$ " NPTF (must be reduced to $\frac{1}{2}$ ")

RECOMMENDED FOR AUGERS OPERATED BY LARGER TRACTORS WITH LARGER HYDRAULIC OUTPUT.



Augers operate best at 10-12 GPM & 1200-1500 PSI.

Market Farm Equipment Ltd. RR# 1 Dashwood, Ontario, Canada N0M 1N0
E-Mail mfeltd@execulink.com Web-Site www.marketfarmequipment.com