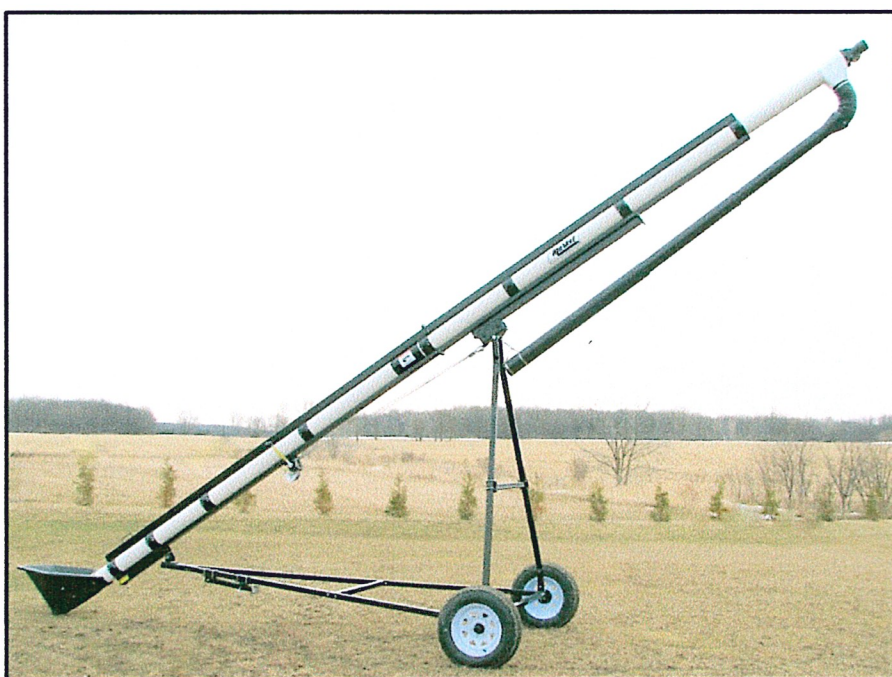




OPERATOR'S MANUAL SET-UP INSTRUCTIONS & PARTS LIST

30' PLASTIC TRANSPORT AUGER



MARKET FARM EQUIPMENT LIMITED, R.R. 1, DASHWOOD, ONTARIO N0M 1N0 (519-238-2301)

www.marketfarmequipment.com

"SERVING THE FARM INDUSTRY SINCE 1962"

WARRANTY PROCEDURE

MARKET FARM EQUIPMENT WARRANTS THEIR MANUFACTURED PRODUCTS TO BE FROM DEFECTS IN MATERIAL AND WORKMANSHIP FOR A PERIOD OF ONE (1) YEAR AFTER THE DATE OF PURCHASE TO THE FIRST END USER AND IS SUBJECT TO THE FOLLOWING CONDITIONS.

- 1. Damage caused by improper use, negligence, or operation beyond rated capacity, improper set-up, adjustment, or any unauthorized modifications Made by the dealer or customer, shall void this warranty.**
- 2. Notification of damage or warranty claims shall be submitted to Market Farm Equipment (M.F.E.) within seven (7) days of the date of failure.**
- 3. All defective parts must be made available by the dealer, for inspection by M.F.E. if required, and returned at the dealer's expense.**
- 4. All warranty claims must be approved by M.F.E.**
- 5. The labour and freight required to replace defective parts is not reimbursable.**
- 6. Exchange, credit or warranty status will be based on the results of the inspection of damaged items by the manufacturer.**
- 7. Credit will be issued if and when the warranty claim is approved and MUST NOT be deducted from the account by the dealer.**
- 8. Products and/or parts not manufactured by M.F.E. are subject to their own manufacturer's warranty conditions.**

WARRANTY CONSIDERATION IS ONLY VALID WHEN THE WARRANTY REGISTRATION FORM HAS BEEN RECEIVED BY MARKET FARM EQUIPMENT.

MARKET FARM EQUIPMENT LIMITED

EXPRESS WARRANTY

Market Farm Equipment Limited warrants against defects in construction and materials for a period of ONE year. We reserve the right to inspect and decide whether material or construction was faulty, or whether abuse or accident voids our guarantee.

This warranty does not cover a component which fails, malfunctions or is damaged as a result of (I) improper modification or repair, (II) accident, abuse or improper use, including loading beyond the specified maximum weights and requirements (III) improper or insufficient maintenance, or (IV) normal wear and tear.

THIS WARRANTY IS EXPRESSLY IN LIEU OF ALL OTHER WARRANTIES OR CONDITIONS, EXPRESS, IMPLIED OR STATUTORY, INCLUDING ANY IMPLIED WARRANTY OF MERCHANTABILITY OR FITNESS FOR A PARTICULAR PURPOSE.

In no way shall Market Farm Equipment Limited be liable for special, direct, incidental or consequential damages of any kind, including but not limited to labour charges.

The exclusive remedy under this warranty shall be repair or replacement of the defective component at Market Farm Equipment Limited's option. This is the entire agreement between Market Farm Equipment Limited and the owner about warranty. NO M.F.E. Ltd. employee or dealer is authorized to make additional warranty on behalf of Market Farm Equipment Limited.

(Fill in the following for future reference)

Serial number:_____

Date of purchase:_____

Purchased from:_____

WARRANTY REGISTRATION

MARKET FARM EQUIPMENT LIMITED
R.R. 1 DASHWOOD, ONTARIO, CANADA, N0M 1N0
Fax: 519-238-6044 E-mail: mfeltd@execulink.com

Purchaser's warranty protection on this equipment is valid only when this registration form is completed by the purchaser and returned to Market Farm Equipment Limited.

Date of purchase: _____

Type of equipment: _____

Model number: _____ **Serial number:** _____

PURCHASER'S SIGNATURE INDICATES:

- **Acceptance of equipment, fully assembled () unassembled ()**
- **Receipt of operator's manual**
- **Clear understanding of warranty**
- **Receipt of instructions on special safety equipment available**
- **Receipt of instructions on safe and proper operating procedures**

PURCHASER:

Name: _____

Signature: _____

Mailing Address: _____

Prov./State: _____ **Postal/Zip Code:** _____

Telephone number: _____

Purchased from: _____

THIS WARRANTY MUST BE VALIDATED BY THE MANUFACTURER

It is valid only when a copy of the registration has been received by the manufacturer at address shown.

SAFETY INFORMATION

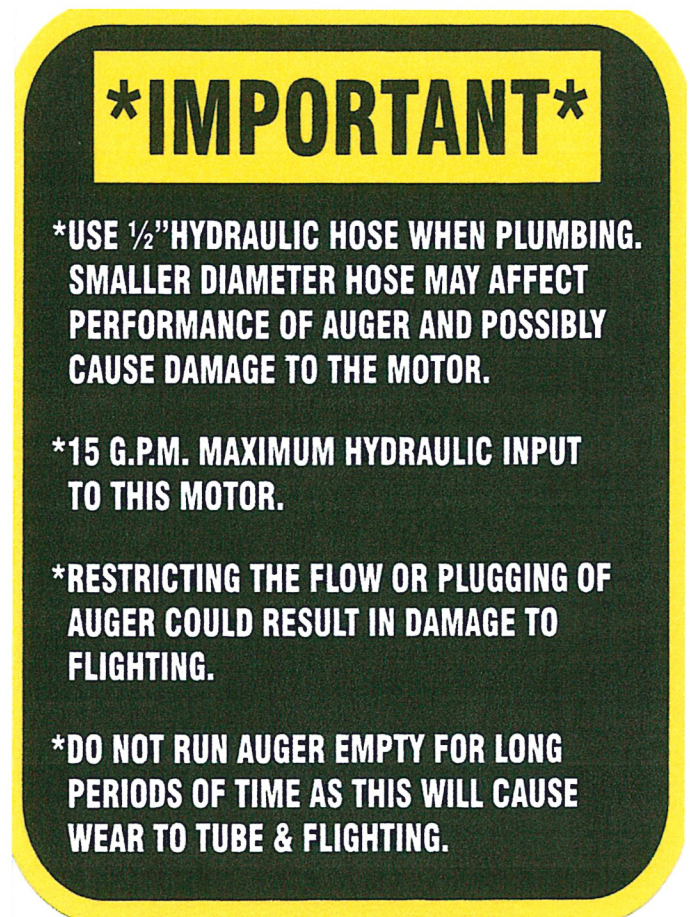
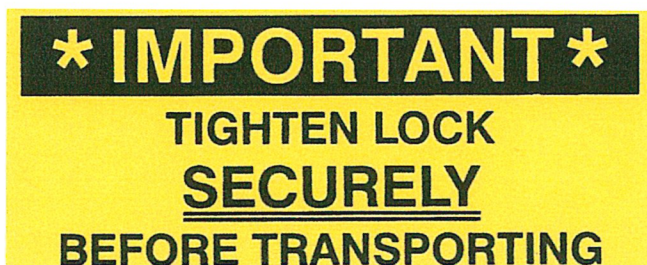
- Before using auger READ and UNDERSTAND SAFETY INSTRUCTIONS.
- After hydraulic lines are connected, run auger empty to ensure the flighting is rotating in the proper direction. (if ran backwards, damage may occur)
- Auger should be empty when moving or transporting.
- Hydraulic oil leaking under pressure can cause injury. Make sure all hydraulic connections are tight. Before disconnecting hydraulic lines, relieve pressure.
- Do not adjust, clean or service auger while it is running.
- Keep all safety shields in place. Replace any safety decals that become lost or damaged.
- Do not operate the auger in a manner that it was not intended for.
- When transporting, always keep auger in its lowest position.

HYDRAULIC SYSTEM OPERATING RESTRICTIONS

MAXIMUM FLOW – 15 G.P.M. MAXIMUM PRESSURE – 1750 P.S.I.

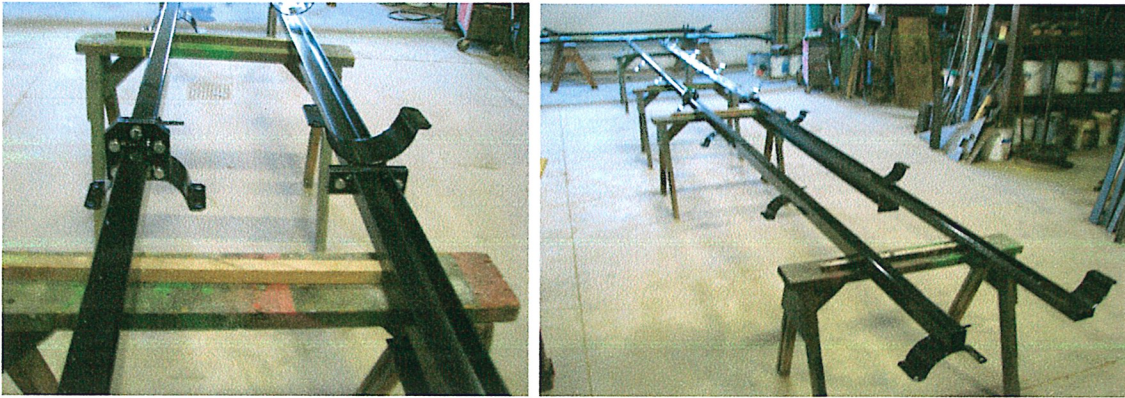
MAXIMUM FLOW AND MAXIMUM PRESSURE conditions MUST NOT occur simultaneously. Damage will occur and warranty will be void. Use only ½" hydraulic hose when plumbing. Smaller hose will create heat that will burn out the hydraulic motor and warranty will be void.

Do not tee into hydraulic lift cylinders on planters or drills.

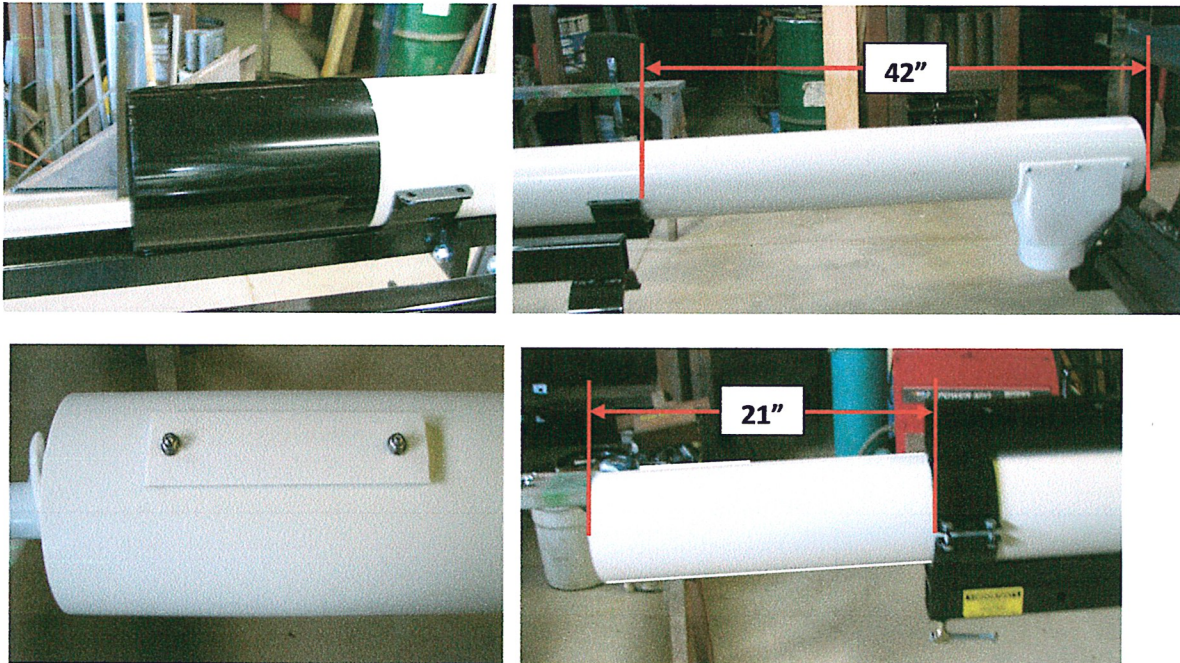


30' TRANSPORT AUGER ASSEMBLY INSTRUCTIONS

1: Assemble upper & lower supports using $\frac{1}{2}$ " x $1\frac{1}{4}$ " bolts & lock nuts.



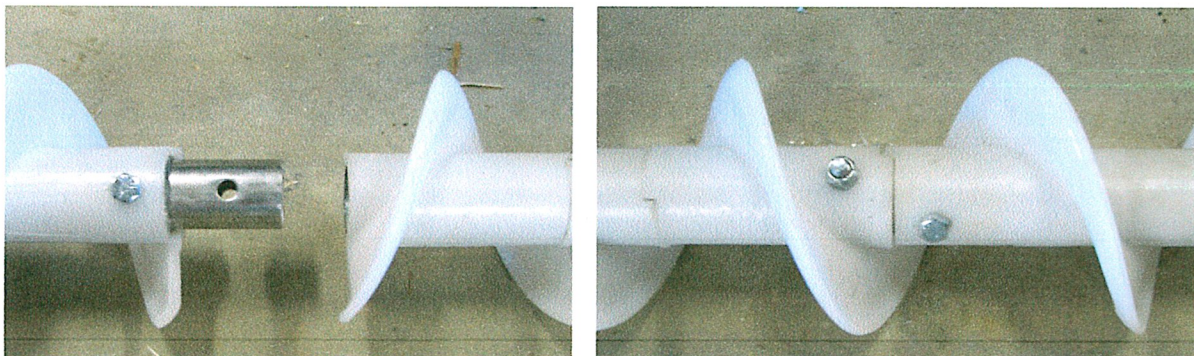
2: Assemble upper & lower plastic auger tubes using the tube connector. Make sure the connector flanges are pointing down. This will allow connection to sit in the lower support channel.



3: The hopper stop should be facing up.

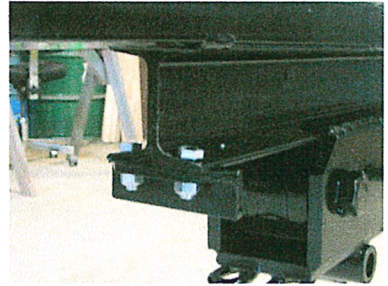
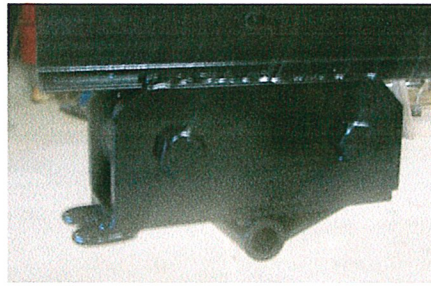
4: Attach upper & lower supports to the plastic auger tube using $\frac{3}{8}$ " x $1\frac{1}{4}$ " bolts and lock nuts.

5: Assemble flighting. (5" cupped plastic shown)

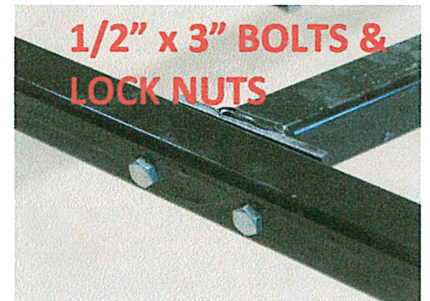
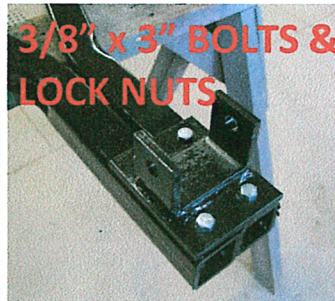
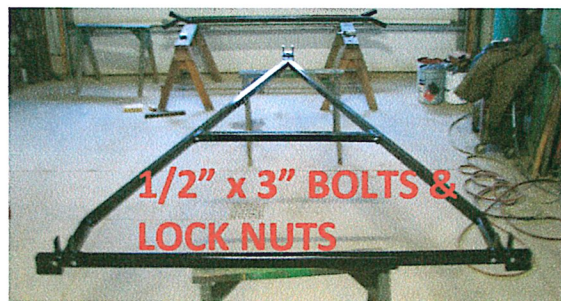


6: Slide flighting into the auger tube and attach to motor using $\frac{3}{8}$ " x $1\frac{3}{4}$ " bolt & lock nut.

7: Slide roller assembly onto the track on the bottom of support channel. Attach roller stop using $\frac{3}{8}$ " x 1" bolts & lock nuts.



8: Insert hub & spindle assemblies into the spindle tubes on axle and fasten using $\frac{1}{2}$ " x $2\frac{1}{2}$ " bolts & lock nuts. Mount tires using wheel bolts. Determine which direction the toe-in is on the axle. Toe-in goes towards the lower frame tie bracket.



9: Assemble lower frame.

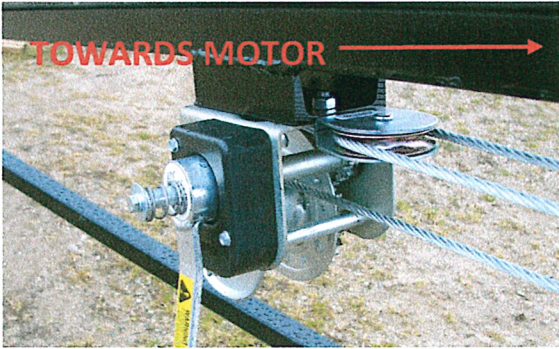
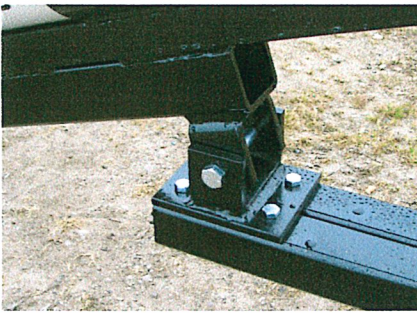
10: Attach upper frame to the lower frame assembly using $\frac{1}{2}$ " x 3" bolts & lock nuts.



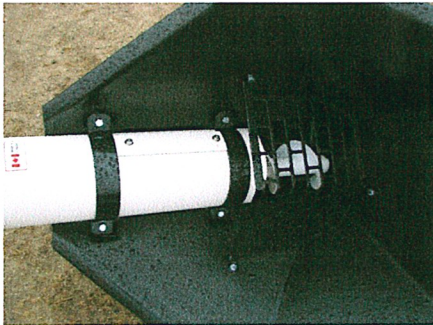
11: Use a chain fall or other means to lift the auger up. Position the frame under the auger. Attach the bottom first using a $\frac{1}{2}$ " x $4\frac{1}{2}$ " bolt & lock nut. Raise the auger up so that the upper frame aligns with the roller assembly. Insert $\frac{1}{2}$ " bushing into the roller assembly. Attach frame to the roller assembly using the $\frac{1}{2}$ " x 10" bolt, $\frac{1}{2}$ " flat washers & lock nut.

12: Mount upper brace to the upper frame using $\frac{3}{8}$ " x 2" u-bolts & lock nuts.

13: Mount winch & lower pulley using $\frac{3}{8}$ " x 1" bolts & lock nuts



- 14: Mount upper pulley and winch cable to the roller assembly using 3/8" quick links.
- 15: Run cable down to lower pulley & back up to upper pulley then down to the winch.
- 16: Mount hopper assembly.



- 17: Mount chain with quick snap using 3/8" x 1" bolt, 3/8" flat washer & lock nut.
- 18: Mount telescoping down spout using 6" hose clamp.

OPTIONAL HOSE KITS

Our hose kits come with 90 degree swivel fittings to go into the hydraulic motors & pioneer ends.

- 1: Fittings are 1/2" NPT. Apply Teflon tape on threads before inserting into motor.
- 2: Secure to auger using hydraulic line holders on the side of the upper support tube.

OPTIONAL HOSE CADDY

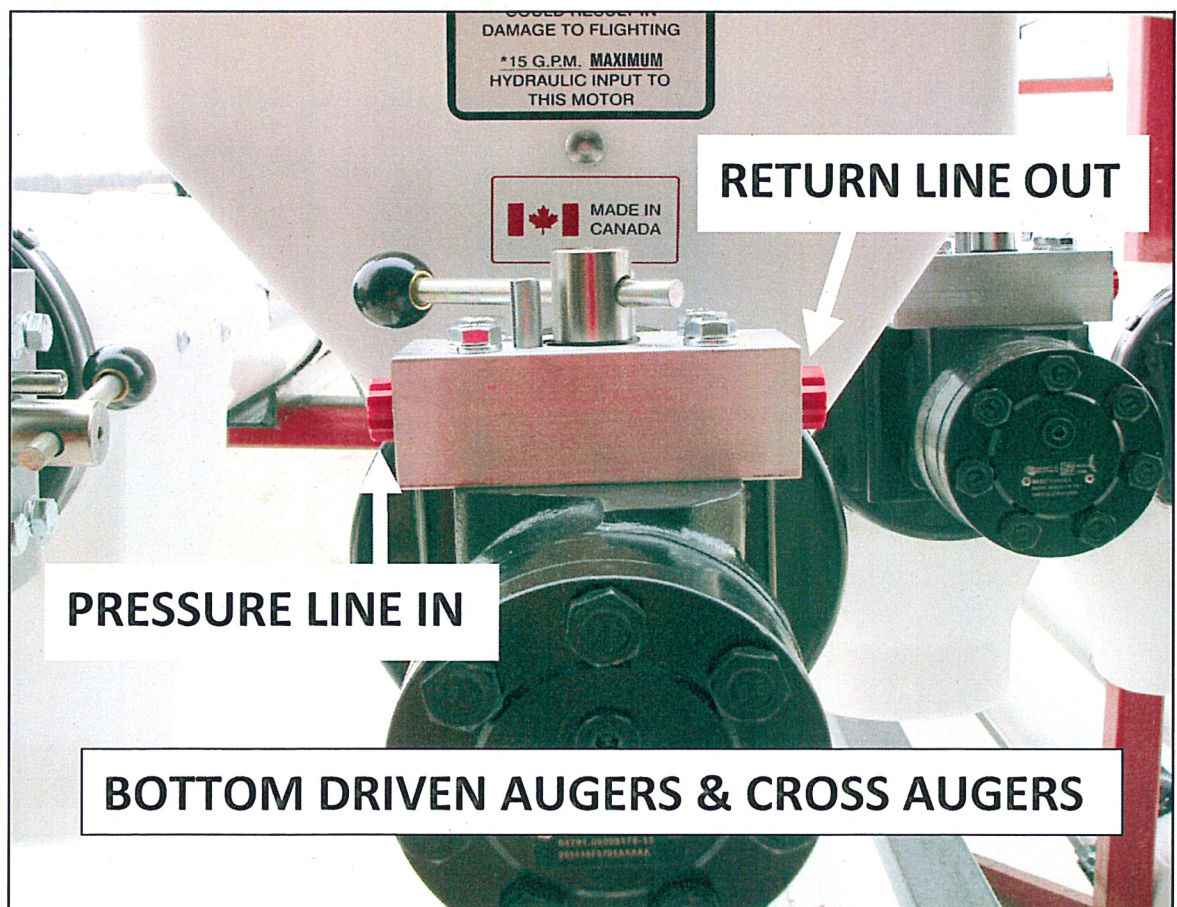
- 1: Mount to lower frame using 3/8" x 2" u-bolts & lock nuts.

TOP DRIVEN AUGERS

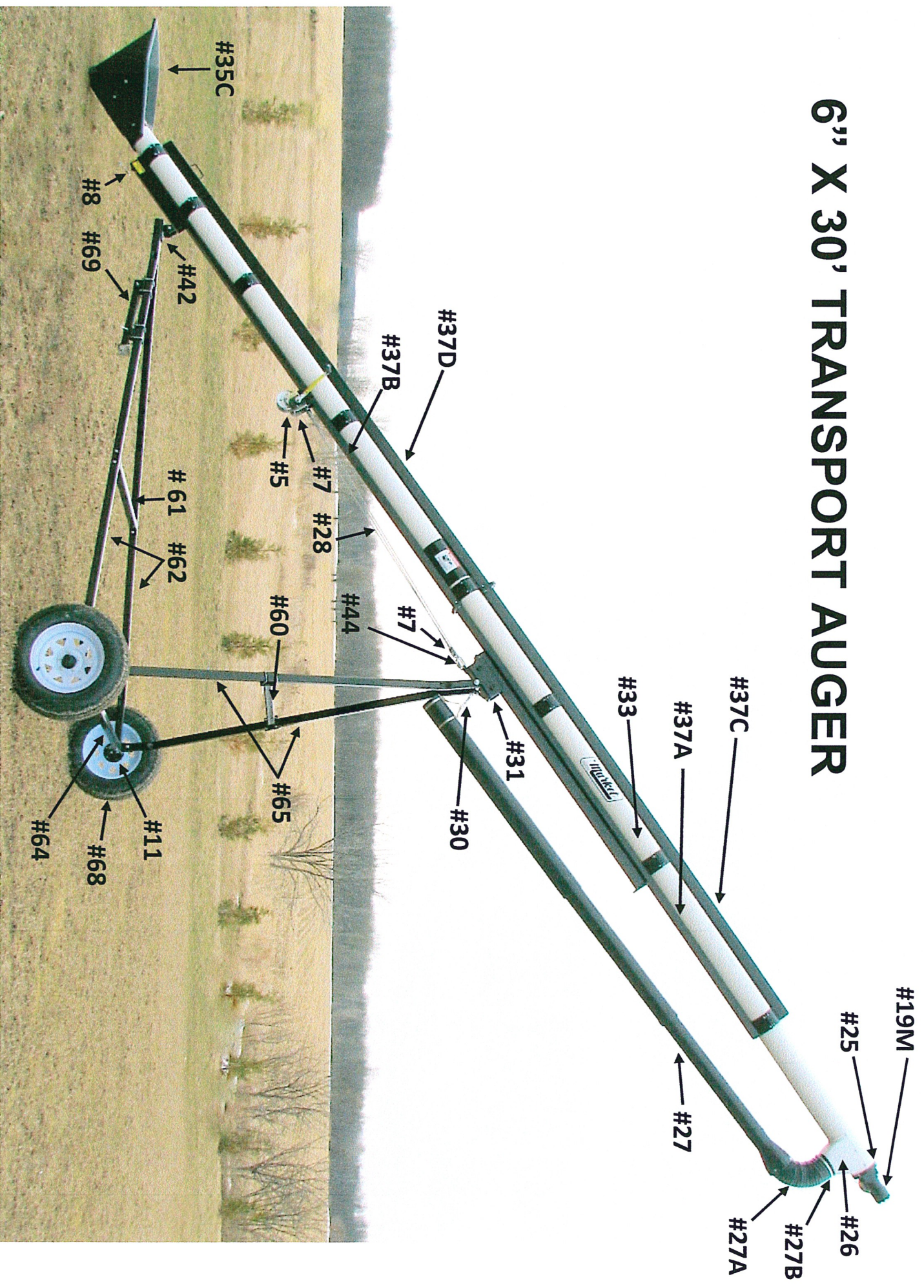
RETURN LINE OUT

**VALVE IN CLOSED
POSITION**

PRESSURE LINE IN



6" X 30' TRANSPORT AUGER



6"X 30' TRANSPORT AUGER PARTS LIST

<u>REF#</u>	<u>DESCRIPTION</u>	<u>(PRODUCT CODE)</u>
5	BRAKE WINCH (459)	
7	2½" PULLEY (376)	
8	LOCK BOLT ASSEMBLY (1175)	
11	HUB & SPINDLE ASSEMBLY	
17	HYDRAULIC LINE HOLDER (922)	
19M	10 CUBIC INCH MANIFOLD MOTOR (173)	
22M	MANIFOLD MOUNT VALVE (9117)	NOT SHOWN
23	VALVE HANDLE (580)	NOT SHOWN
24	3/16" X 22' ROPE (102)	NOT SHOWN
25	6" MOTOR PLATE (198)	
26	6" AUGER DISCHARGE SPOUT (613)	
27	6" 3 STAGE TELESCOPING DOWNSPOUT 7'-17' (461)	
27A	6" X 18" FLEX HOSE C/W RIVETS & WASHERS (725)	
27B	6" HOSE CLAMP (149)	
28	1/4" X 14' CABLE C/W SWAGED END (36')	
30	CHAIN C/W SNAP (1177)	
31	ROLLER ASSEMBLY	
32	HOPPER STOP (1203)	NOT SHOWN
33	6" PLASTIC AUGER TUBE <u>RAW</u> (193)	
35C	6" V/A HOPPER (657)	
35A	6" V/A HOPPER CLAMP BAND (549)	NOT SHOWN
35B	V/A SAFETY GRILLE (546)	NOT SHOWN
37A	BOTTOM SUPPORT CHANNEL (UPPER SECTION)	
37B	BOTTOM SUPPORT CHANNEL (LOWER SECTION)	
37C	TOP SUPPORT TUBE (UPPER SECTION)	
37D	TOP SUPPORT TUBE (LOWER SECTION)	
39	5/8" BENT PIN (100)	NOT SHOWN
41	TONGUE (255)	NOT SHOWN
42	LOWER FRAME TIE BRACKET	
44	3/8" QUICK LINK	
60	UPPER BRACE	
61	LOWER BRACE	
62	LOWER FRAME	
64	AXLE	
65	UPPER FRAME LEG	
68	ST205/75D15 TIRE ASSEMBLY (273B)	NOT SHOWN
69	OPTIONAL JACK STAND	
70	OPTIONAL HOSE CADDY (1284)	NOT SHOWN
71	OPTIONAL HOSE KIT (2-45')	NOT SHOWN

FLIGHTING STYLES: STRAIGHT BLADE PLASTIC, 5" CUPPED PLASTIC, BRISTLE & CUPPED STEEL (SPECIFY LENGTH & AUGER STYLE)

IMPORTANT

YOUR AUGERS DOWNSPOUT SHOULD NEVER BE SET DOWN OR LEFT UNATTENDED WHILE THE AUGER IS RUNNING.

MATERIAL CAN BUILD UP QUICKLY CAUSING THE DOWNSPOUT AND AUGER TO PLUG. THIS CAN DAMAGE THE AUGERS FLIGHTING AND MOTOR.

ALWAYS TURN AUGER OFF BEFORE LEAVING THE DOWNSPOUT TO ATTEND TO OTHER MATTERS.



IMPORTANT OPERATING INSTRUCTIONS

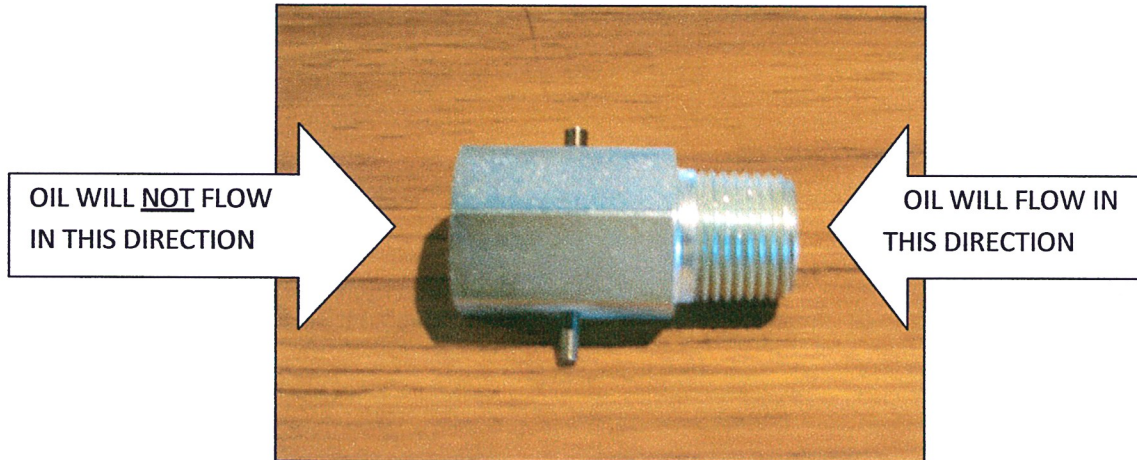
- 1: NEVER LEAVE THE DOWNSPOUT (TELESCOPING OR FLEX) UNATTENDED WHILE THE AUGER IS RUNNING. IF IT IS NECESSARY TO LEAVE THE DOWNSPOUT, SHUT AUGER OFF.**
- 2: NEVER HOLD THE DOWNSPOUT (TELESCOPING OR FLEX) DOWN TOO LOW. THE MATERIAL CAN BUILD UP AND PLUG THE DISCHARGE. PLUGGING AND DAMAGE TO FLIGHTING CAN OCCUR QUICKLY. TO AVOID COSTLY DOWNTIME AND REPAIR COSTS ALWAYS BE AWARE OF HOW FULL YOUR SEED/FERTILIZER HOPPERS ARE GETTING WHILE FILLING.**
- 3: NEVER EXCEED THE MAXIMUM 15 G.P.M. HYDRAULIC INPUT. MOST AUGERS REQUIRE 9-12 GPM AT 1200-1500 PSI TO RUN PROPERLY.**
- 4: NEVER RUN AUGER EMPTY FOR LONG PERIODS OF TIME AS THIS WILL CAUSE WEAR TO THE TUBE & FLIGHTING.**
- 5: OPTIONAL FLOW REGULATOR VALVES (10 GPM MAX.) AND DIRECTIONAL VALVES ARE AVAILABLE.**
- 6: OPTIONAL ELECTRIC SOLENOID VALVES ARE AVAILABLE WITH CABLE OR REMOTE SHUT-OFF/ON FEATURES.**

PLEASE READ ALL SAFETY/IMPORTANT DECALS ON THE AUGER. UNDERSTANDING THE AUGERS REQUIREMENTS AND PROPER USE WILL ENSURE A LONG AND TROUBLE FREE LIFE FOR THE AUGER.

OPTIONAL VALVES FOR HYDRAULIC AUGERS

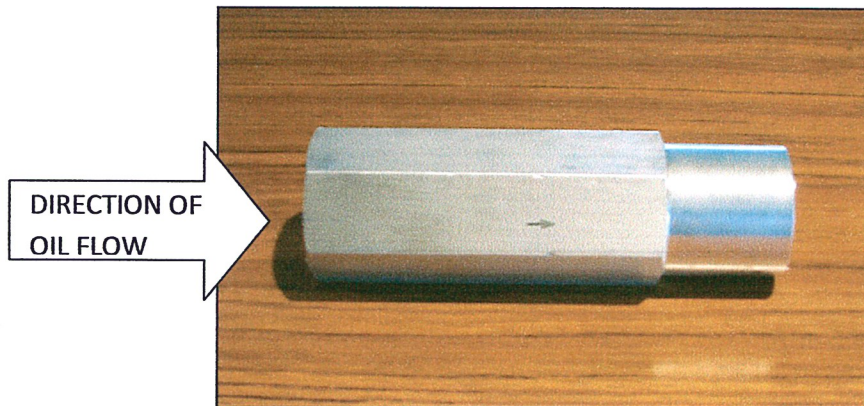
Note: These optional valves do not replace the shut-off valve on the auger.

A directional valve fitting can be installed to restrict the auger from running in the reverse direction. This valve should be installed on the return line, between the valve on motor and the tractor. Thread is $\frac{1}{2}$ " NPT. **RECOMMENDED FOR AUGERS THAT SHOULD NOT BE RUN IN REVERSE, AS IT MAY CAUSE DAMAGE TO THE FLIGHTING.**



An in-line, pressure compensated, nonadjustable flow regulator valve is available for CLOSED CENTER HYDRAULIC SYSTEMS. In the controlled direction, this regulator will maintain a constant flow rate of 10 GPM. This valve should be installed on the pressure line, between the tractor and the valve on motor. Thread is $\frac{3}{4}$ " NPTF (must be reduced to $\frac{1}{2}$ ")

RECOMMENDED FOR AUGERS OPERATED BY LARGER TRACTORS WITH LARGER HYDRAULIC OUTPUT.



Augers operate best at 10-12 GPM & 1200-1500 PSI.

Market Farm Equipment Ltd. RR# 1 Dashwood, Ontario, Canada N0M 1N0
E-Mail mfeltd@execulink.com Web-Site www.marketfarmequipment.com