



**OPERATOR'S MANUAL
SET-UP INSTRUCTIONS
&
PARTS LIST**

SEED FILL CROSS AUGER & VERTICAL AUGER FOR JOHN DEERE 750/1560/1590 DRILLS



MARKET FARM EQUIPMENT LIMITED, R.R.#1 DASHWOOD, ONTARIO, CANADA

TEL# 519-238-2301 FAX# 519-238-6044 E-MAIL: mfeltd@execulink.com

www.marketfarmequipment.com

"SERVING THE FARM INDUSTRY SINCE 1962"

WARRANTY PROCEDURE

MARKET FARM EQUIPMENT WARRANTS THEIR MANUFACTURED PRODUCTS TO BE FROM DEFECTS IN MATERIAL AND WORKMANSHIP FOR A PERIOD OF ONE (1) YEAR AFTER THE DATE OF PURCHASE TO THE FIRST END USER AND IS SUBJECT TO THE FOLLOWING CONDITIONS.

1. Damage caused by improper use, negligence, or operation beyond rated capacity, improper set-up, adjustment, or any unauthorized modifications made by the dealer or customer, shall void this warranty.
2. Notification of damage or warranty claims must be submitted to Market Farm Equipment (M.F.E.) within seven (7) days of the date of failure.
3. All defective parts must be made available by the dealer, for inspection by M.F.E. if required, and returned at the dealer's expense.
4. All warranty claims must be approved by M.F.E.
5. The labour and freight required to replace defective parts is not reimbursable.
6. Exchange, credit or warranty status will be based on the results of the inspection of damaged items by the manufacturer.
7. Credit will be issued if and when the warranty claim is approved and **MUST NOT** be deducted from the account by the dealer.
8. Products and/or parts not manufactured by M.F.E. are subject to their own manufacturer's warranty conditions.

WARRANTY CONSIDERATION IS ONLY VALID WHEN THE WARRANTY REGISTRATION FORM HAS BEEN RECEIVED BY MARKET FARM EQUIPMENT.

WARRANTY REGISTRATION

**MARKET FARM EQUIPMENT LIMITED
R.R. 1 DASHWOOD, ONTARIO, CANADA, N0M 1N0
Fax: 519-238-6044 E-mail: mfeltd@execulink.com**

Purchaser's warranty protection on this equipment is valid only when this registration form is completed by the purchaser and returned to Market Farm Equipment Limited.

Date of purchase: _____

Type of equipment: _____

Model number: _____ **Serial number:** _____

PURCHASER'S SIGNATURE INDICATES:

- Acceptance of equipment, fully assembled () unassembled ()
- Receipt of operator's manual
- Clear understanding of warranty
- Receipt of instructions on special safety equipment available
- Receipt of instructions on safe and proper operating procedures

PURCHASER:

Name: _____

Signature: _____

Mailing Address: _____

Prov./State: _____ **Postal/Zip Code:** _____

Telephone number: _____

Purchased from: _____

THIS WARRANTY MUST BE VALIDATED BY THE MANUFACTURER

It is valid only when a copy of the registration has been received by the manufacturer at address shown.

MARKET FARM EQUIPMENT LIMITED

EXPRESS WARRANTY

Market Farm Equipment Limited warrants against defects in construction and materials for a period of ONE year. We reserve the right to inspect and decide whether material or construction was faulty, or whether abuse or accident voids our guarantee.

This warranty does not cover a component which fails, malfunctions or is damaged as a result of (I) improper modification or repair, (II) accident, abuse or improper use, including loading beyond the specified maximum weights and requirements (III) improper or insufficient maintenance, or (IV) normal wear and tear.

THIS WARRANTY IS EXPRESSLY IN LIEU OF ALL OTHER WARRANTIES OR CONDITIONS, EXPRESS, IMPLIED OR STATUTORY, INCLUDING ANY IMPLIED WARRANTY OF MERCHANTABILITY OR FITNESS FOR A PARTICULAR PURPOSE.

In no way shall Market Farm Equipment Limited be liable for special, direct, incidental or consequential damages of any kind, including but not limited to labour charges.

The exclusive remedy under this warranty shall be repair or replacement of the defective component at Market Farm Equipment Limited's option. This is the entire agreement between Market Farm Equipment Limited and the owner about warranty. NO M.F.E. Ltd. employee or dealer is authorized to make additional warranty on behalf of Market Farm Equipment Limited.

(Fill in the following for future reference)

Serial number: _____

Date of purchase: _____

Purchased from: _____

SAFETY INFORMATION

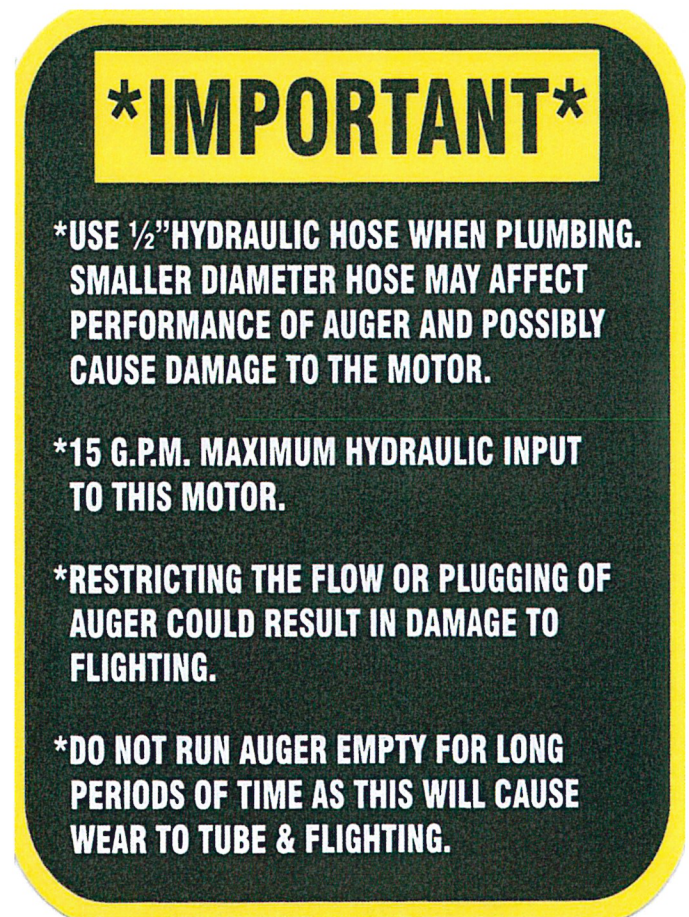
- Before using auger READ and UNDERSTAND SAFETY INSTRUCTIONS.
- After hydraulic lines are connected, run auger empty to ensure the flighting is rotating in the proper direction. (if ran backwards, damage may occur)
- Auger should be empty when moving or transporting.
- Hydraulic oil leaking under pressure can cause injury. Make sure all hydraulic connections are tight. Before disconnecting hydraulic lines, relieve pressure.
- Do not adjust, clean or service auger while it is running.
- Keep all safety shields in place. Replace any safety decals that become lost or damaged.
- Do not operate the auger in a manner that it was not intended for.
- When transporting, always keep auger in its lowest position.

HYDRAULIC SYSTEM OPERATING RESTRICTIONS

MAXIMUM FLOW – 20 G.P.M. MAXIMUM PRESSURE – 2500 P.S.I.

MAXIMUM FLOW AND MAXIMUM PRESSURE conditions MUST NOT occur simultaneously. Damage will occur and warranty will be void. Use only ½" hydraulic hose when plumbing. Smaller hose will create heat that will burn out the hydraulic motor and warranty will be void.

Do not tee into hydraulic lift cylinders on planters or drills.



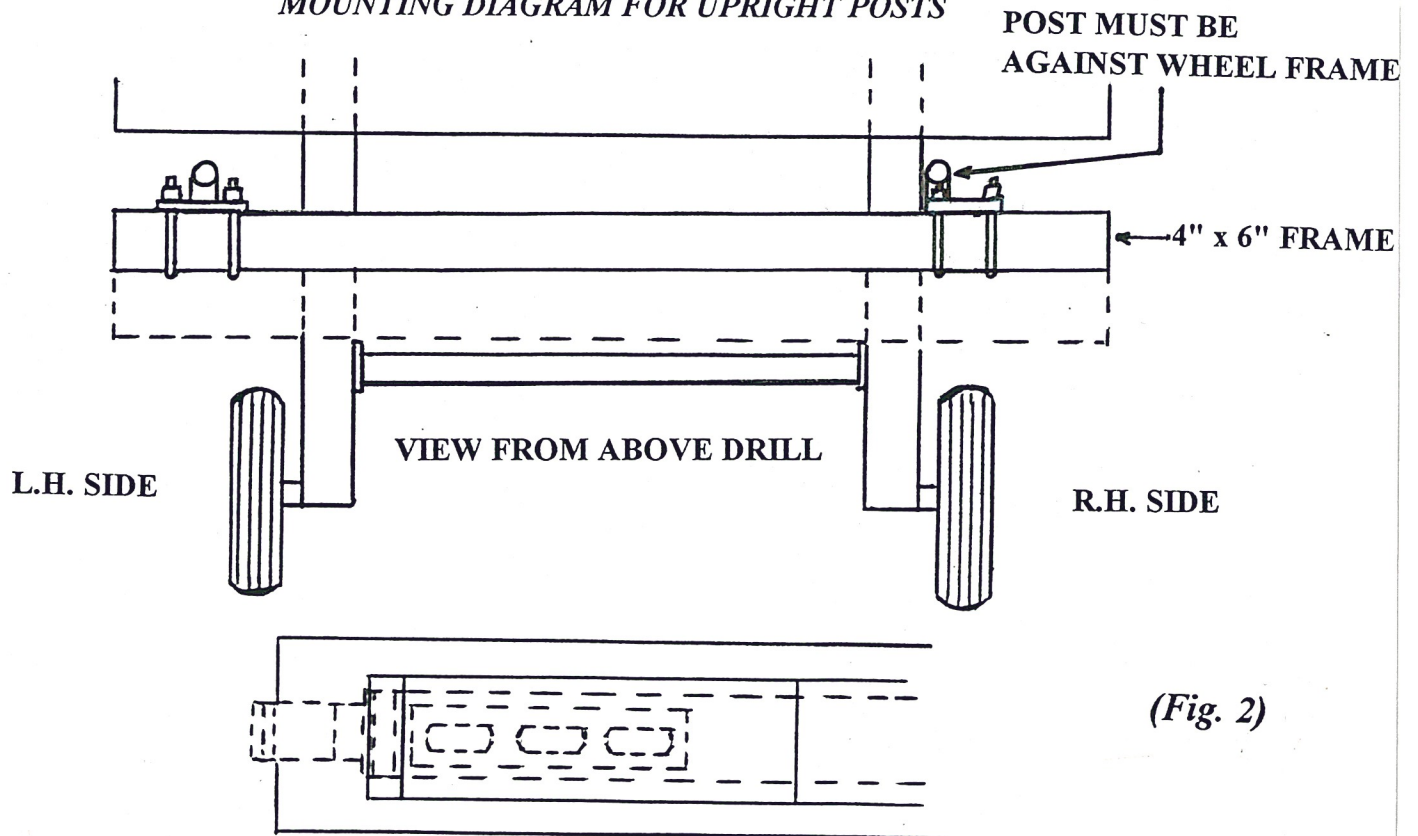
**SEED FILL CROSSAUGER MOUNTING INSTRUCTIONS FOR
15' & 20' John Deere 750 / 1560 / 1590 Drill**

1. Set crossauger on closed lid of drill, end of motor should be even with end of seed tank.
2. On 15' drills locking post (17 / 17A) is mounted on left side and regular post (18 / 18A) on right. On 20' drills locking post (17 / 17A) is mounted on left side and 2 non locking posts (18 / 18A) on center and right side.

NOTE: MAKE SURE UPRIGHT POSTS ARE PERFECTLY PLUMB

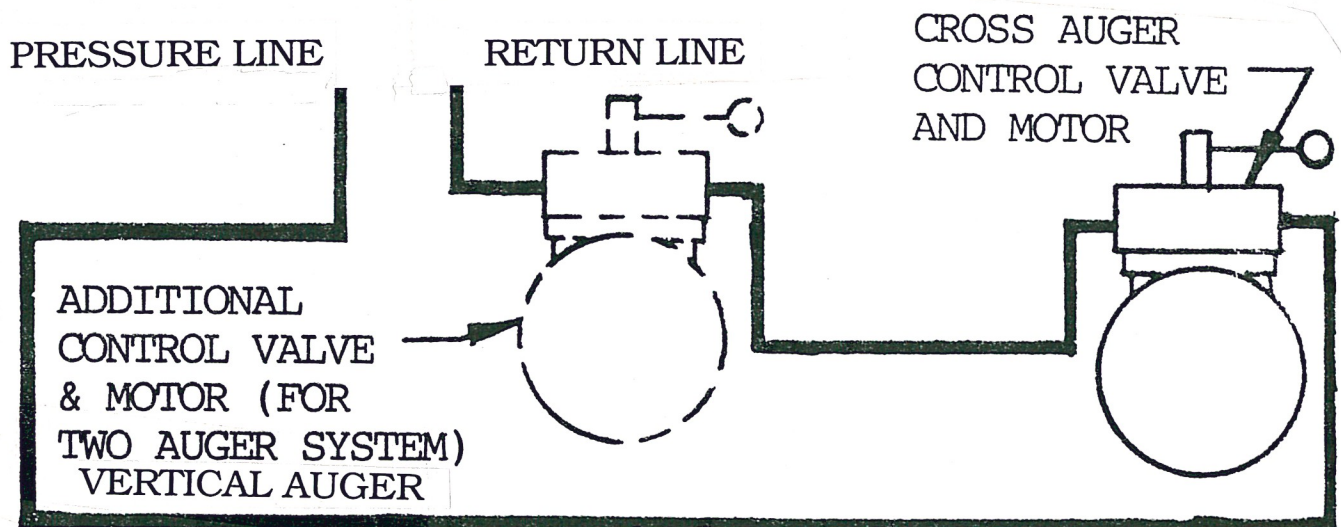
3. Remove adjustable stops (15) and slide crossarms (11 & 12) onto upright posts making sure plastic washers (6) and plastic sleeves (16) are in place. The guide bushing (13) may need to be turned to allow guide to fit between lock pins on crossarm on locking post.
4. Set auger on crossarms making sure plastic discs (10) are on bolts before going through holes in crossarms. (Loosening of clamp bands may be necessary). Tighten nut on bolt until it is up against crossarm. **DO NOT OVER TIGHTEN.**
5. Mount adjustable stops (15) loosely.
6. Swing auger as far as needed to clear the hopper lid, set adjustable stops against crossarms, then tighten.
7. Swing auger to filling position so that crossarms are at 90° to the auger tube, then tighten ½" bolt on guide bushing.
8. Swing auger back and forth a few times to check for proper alignment.

MOUNTING DIAGRAM FOR UPRIGHT POSTS



(Fig. 2)

1st DROP POSITION STARTS AT EDGE OF LIP INSIDE HOPPER OPENING



INSTRUCTIONS FOR VERTICAL AUGER JOHN DEERE 750 / 1560 / 1590 DRILL

- 1. Install vertical auger frame weldment post (7) to 4" x 6" frame using 1/2" x 8 1/2" bolts, nuts, lock washers and backer plate. (Fig. 1)**

NOTE:

To determine position, measure from inside of wheel frame to center of frame weldment post. (15' - 20 1/2" and 20' - 34").

- 2. Mount stabilizer mounting tab bracket (51) on outside of wheel frame using existing 2 bolts and nuts. (Fig. 2)**
- 3. Attach stabilizer brace (49/50 - outer) to tab on frame weldment post and the other end to the stabilizer mounting tab (51) with 3/8" x 1 1/4" bolts and lock nuts.**
- 4. Slide the swing arm (2) onto the post, take caution not to damage plastic sleeve (1) inside 2 1/2" x 10" bushing. (Fig. 1)**
- 5. Mount auger by inserting the pivot support tube (52) into the swing arm (2), install pivot support collar (53) and attach with a 3/8" x 2" bolt and lock nut. (Fig. 3)**
- 6. Install the transport bracket (10) on R.H. side of weigh bar.**
- 7. Place auger in transport bracket wedge lock receiver (9) and tighten using lock bolt (5) as well tighten the lock bolt (5) on the swing arm. Rotate hopper to eliminate dirt and water buildup.**

OPERATING INSTRUCTIONS

Release lock bolts on transport bracket wedge lock and swing arm. Swing auger into filling position so that auger spout is directly over crossauger fill hopper.

NOTE:

Before transporting, make sure both the wedge lock and swing arm lock bolts are tightened.



FIG. 1

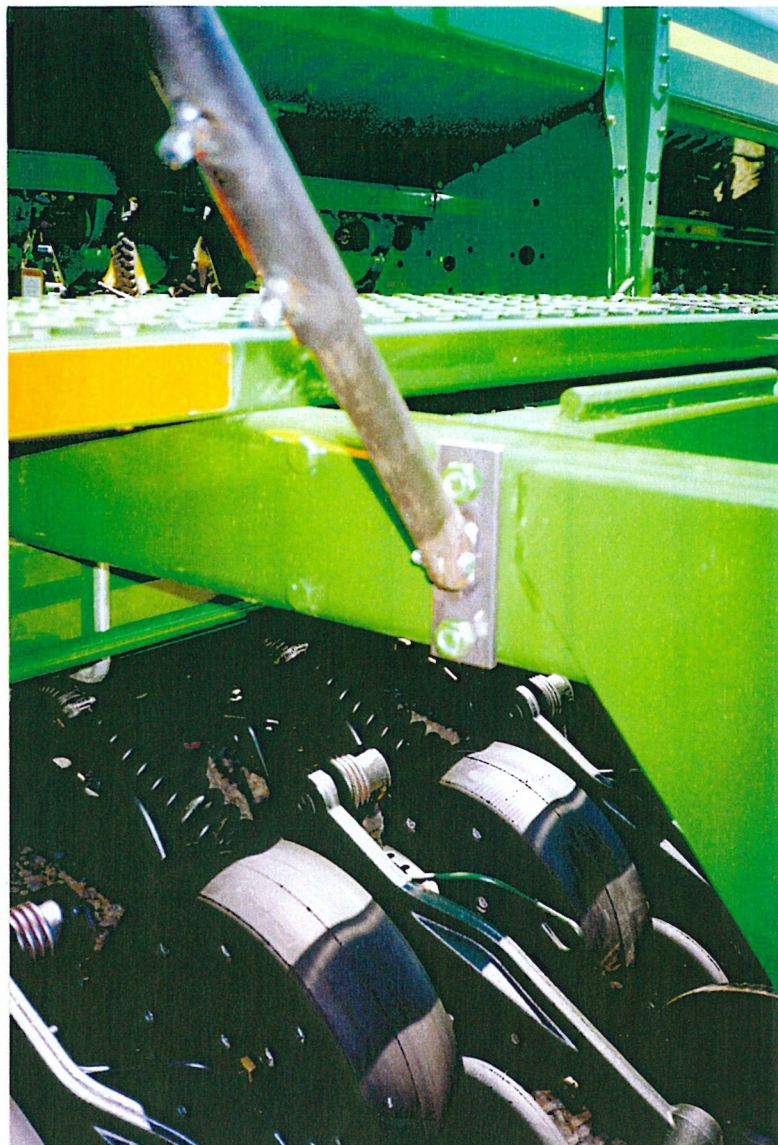


FIG. 2



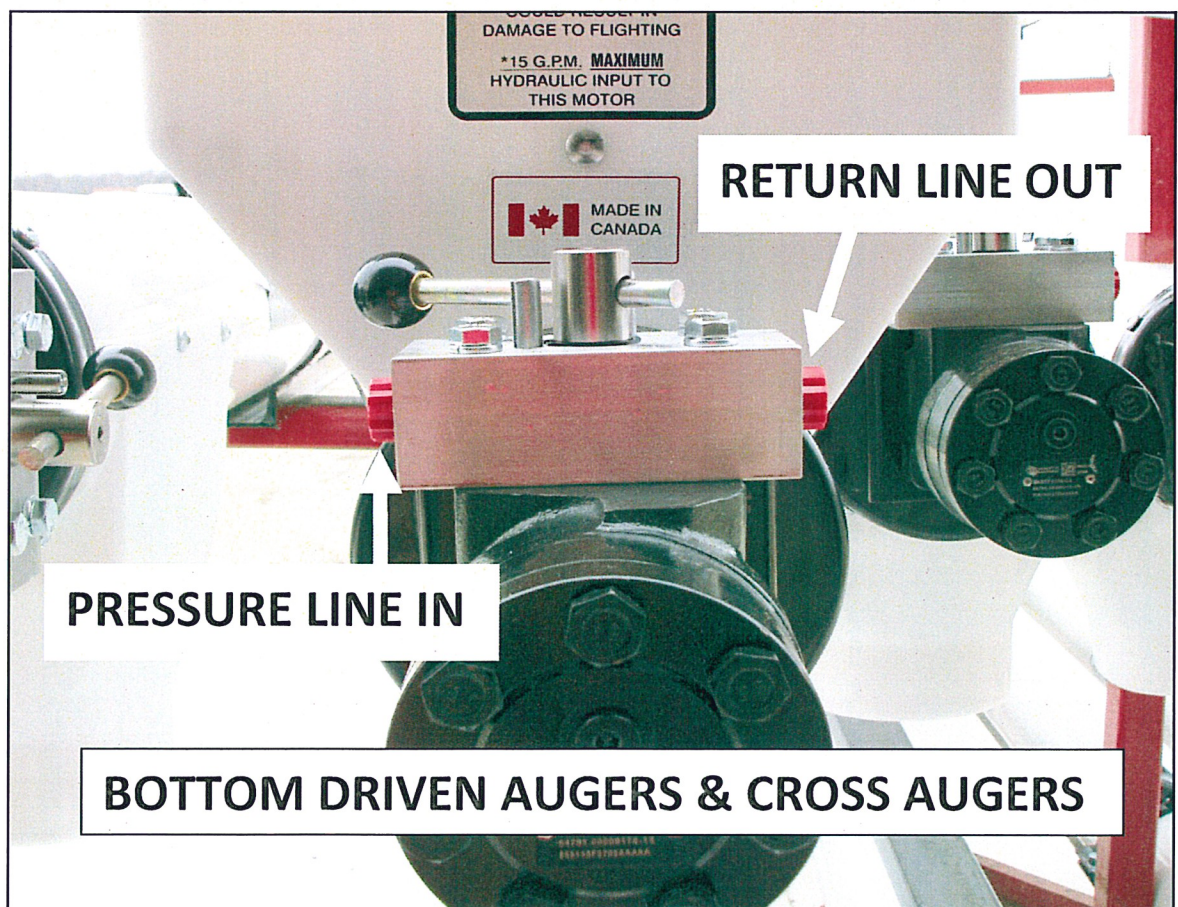
FIG. 3

TOP DRIVEN AUGERS

RETURN LINE OUT

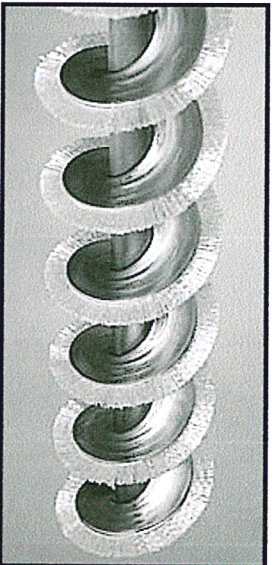
**VALVE IN CLOSED
POSTION**

PRESSURE LINE IN

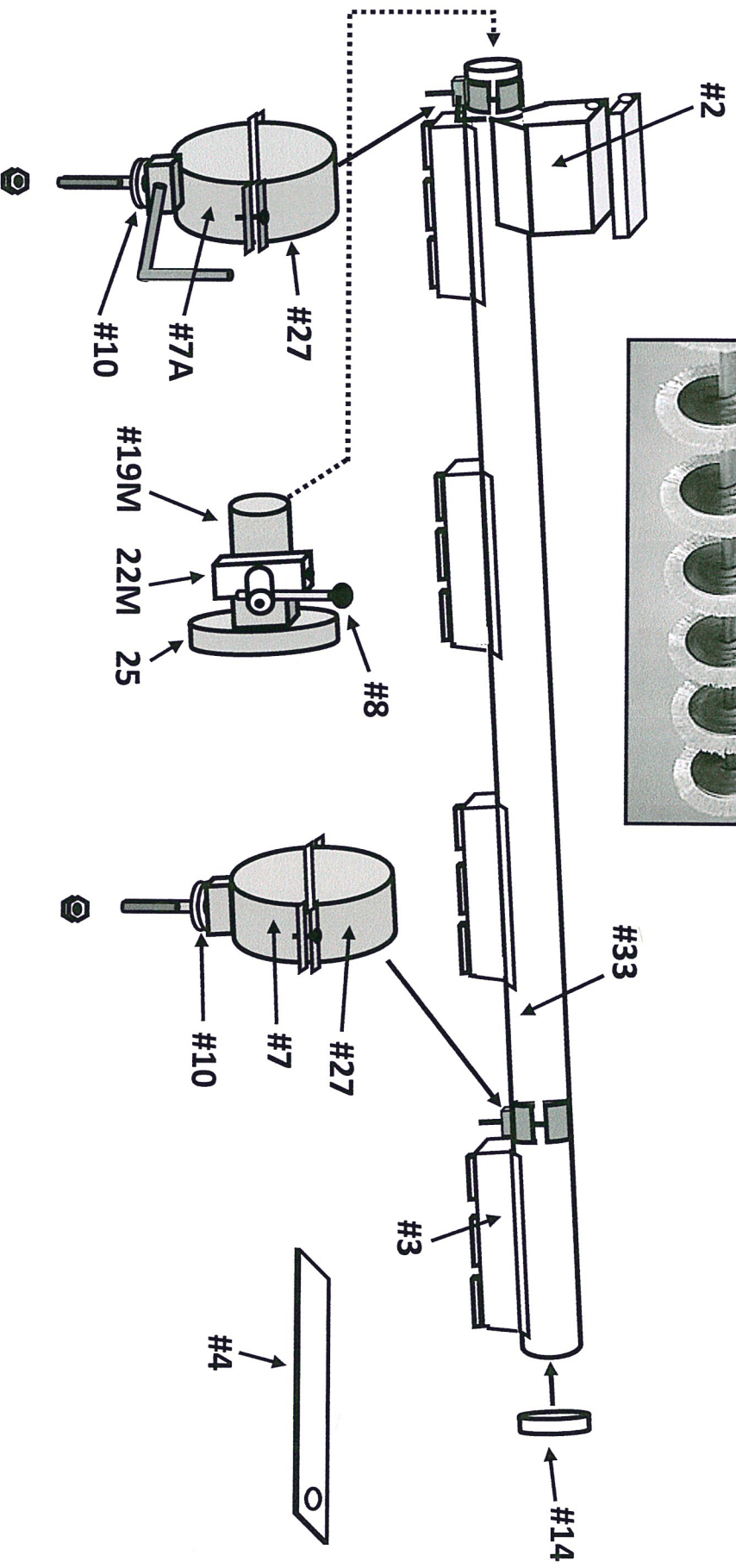


SEED FILL CROSS AUGER JOHN DEERE 750/1560/1590

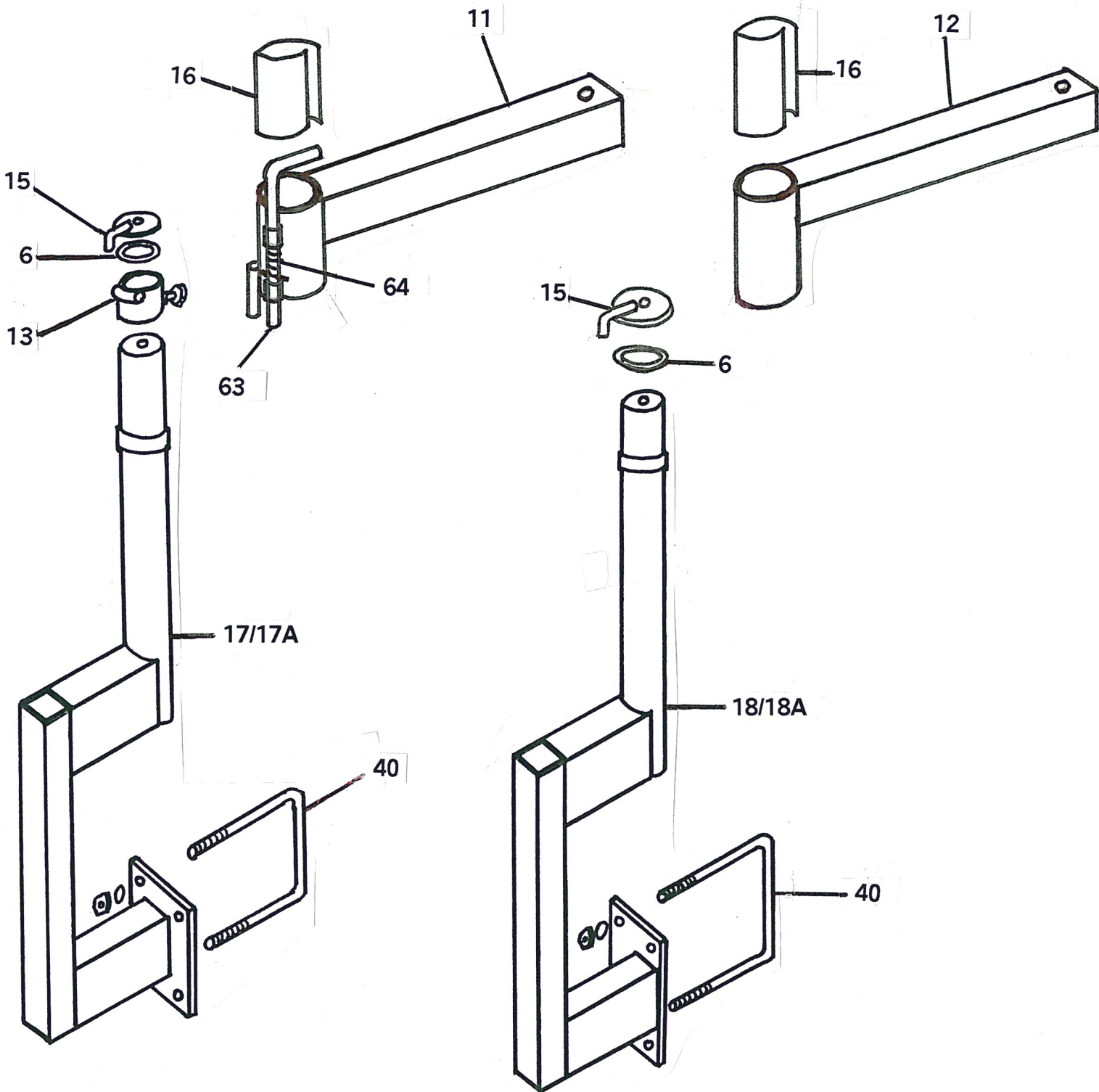
#34 BRISTLE FLIGHTING



SCALE PKG.
YES NO



SEED FILL CROSSAUGER 15' JOHN DEERE 750/1560/1590



SEED FILL CROSS AUGER & VERTICAL AUGER PARTS LIST
JOHN DEERE 750/1560/1590

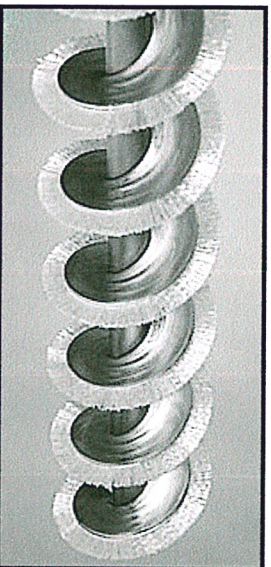
CROSS AUGER	VERTICAL AUGER
#2 HOPPER & LID ASSEMBLY (195)	#1 9 ½" UHMW PLASTIC SLEEVE
#3 6" PLASTIC DROP (196)	#2 SWING ARM (1184)
#4 SHUT-OFF SLIDE FOR 6" DROP (197)	#5 LOCK BOLT ASSEMBLY (1175)
#6 UHMW PLASTIC WASHER (783)	#6 UHMW PLASTIC WASHER (783)
#7 PIVOT CLAMP BAND (957)	#7 FRAME WELDMENT (1198)
#7A PIVOT CLAMP BAND/HANDLE (957B)	#8 VALVE HANDLE (581)
#8 VALVE HANDLE (581)	#9 WEDGELOCK RECEIVER (956)
#10 UHMW PLASTIC DISC	#10 TRANSPORT BRACKET (842)
#11 LOCKING CROSSARM (1196)	#19M MOTOR (MANIFOLD STYLE) (395)
#12 CROSSARM (1196B)	#22M VALVE (MANIFOLD STYLE) (117)
#13 LOCK GUIDE	#25 6" MOTOR PLATE (198)
#14 PLASTIC OVERFLOW END CAP (398)	#28 6"X 4" HALF CLAMP BAND (552)
#15 ADJUSTABLE STOP	#29 PIVOT HALF CLAMP BAND (955)
#16 4"UHMW PLASTIC SLEEVE	#31 WEDGELOCK HALF CLAMP BAND (762)
#17 *LOCKING POST (1197)	#32 HOPPER STOP (112)
#18 *REGULAR POST (1197B)	#33 ** 6" PVC TUBE (193)
#19M MOTOR (MANIFOLD STYLE) (395)	#34 **6" BRISTLE FLIGHTING (657)
#22M VALVE (MANIFOLD STYLE) (117)	#35 6" V/A HOPPER ASSEMBLY (546)
#25 6" MOTOR PLATE (198)	#35A V/A CLAMP BAND (549)
#27 6"X 3" HALF CLAMP BAND (181)	#35B V/A SAFETY GRILLE (548)
#33 ** 6" PVC TUBE (193)	#46 6" "WYE" FITTING (542)
#34 **6" BRISTLE FLIGHTING (657)	#49 INNER BRACE
#40 6" U-BOLT	#50 OUTER BRACE
#63 LOCK HANDLE	#51 BRACE MOUNTING BRACKET
#64 SPRING	#52 PIVOT SUPPORT TUBE
	#53 COLLAR FOR PIVOT TUBE

***SPECIFY MODEL, WIDTH & WITH OR WITHOUT SCALES**

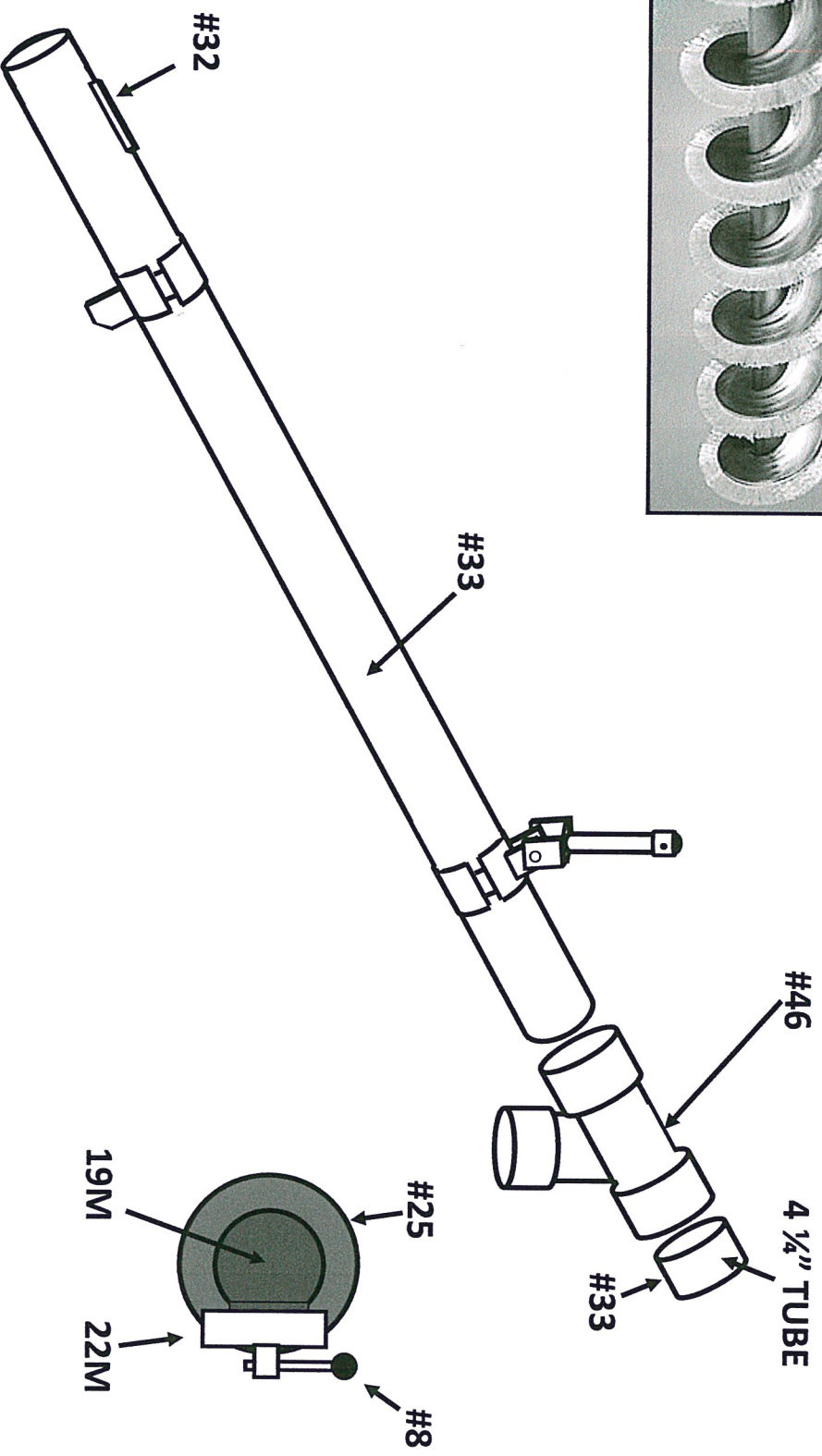
**** SPECIFY MODEL & WIDTH**

15' SEED-FILL VERTICAL AUGER JD 750/1560/1590

#34 BRISTLE FLIGHTING



TUBE LENGTH: 158 ³/₈"
15' BRISTLE FLIGHTING



****REQUIRES 6" VERTICAL HOPPER ASS.**

15' SEED-FILL VERTICAL AUGER JD 750/1590 HDWE

