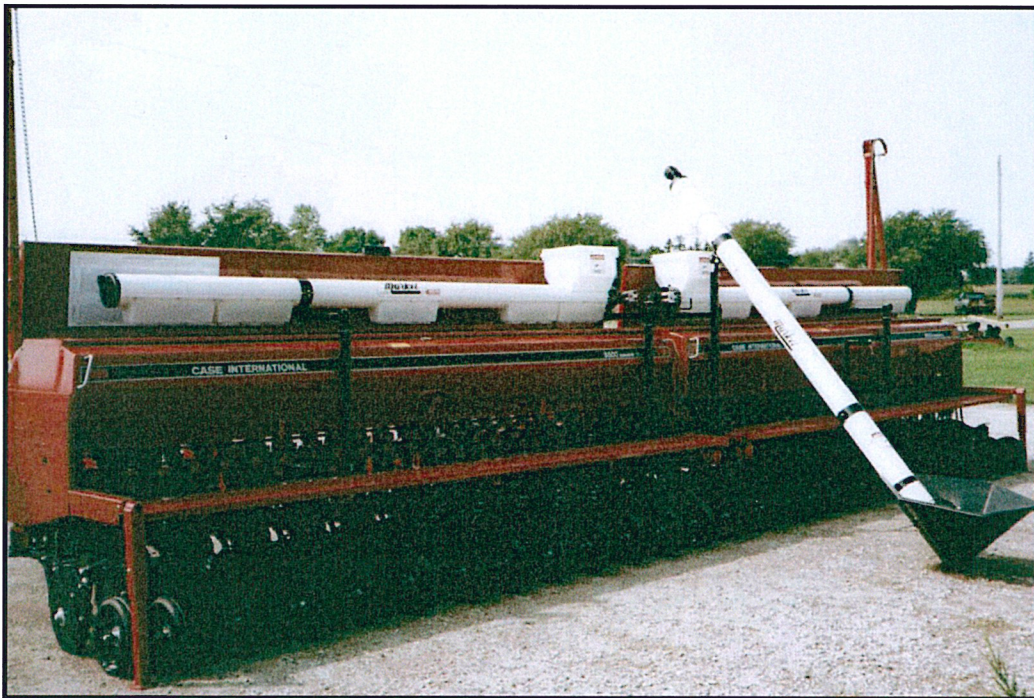




**OPERATOR'S MANUAL  
SET-UP INSTRUCTIONS  
&  
PARTS LIST**

# **SEED FILL CROSS AUGER & VERTICAL AUGER FOR MINIMUM TILL/3 PT. HITCH DRILLS**



**MARKET FARM EQUIPMENT LIMITED, R.R.#1 DASHWOOD, ONTARIO, CANADA**

**TEL# 519-238-2301 FAX# 519-238-6044 E-MAIL: [mfeltd@execulink.com](mailto:mfeltd@execulink.com)**

**[www.marketfarmequipment.com](http://www.marketfarmequipment.com)**

**"SERVING THE FARM INDUSTRY SINCE 1962"**

# **WARRANTY PROCEDURE**

MARKET FARM EQUIPMENT WARRANTS THEIR MANUFACTURED PRODUCTS TO BE FROM DEFECTS IN MATERIAL AND WORKMANSHIP FOR A PERIOD OF ONE (1) YEAR AFTER THE DATE OF PURCHASE TO THE FIRST END USER AND IS SUBJECT TO THE FOLLOWING CONDITIONS.

1. Damage caused by improper use, negligence, or operation beyond rated capacity, improper set-up, adjustment, or any unauthorized modifications made by the dealer or customer, shall void this warranty.
2. Notification of damage or warranty claims must be submitted to Market Farm Equipment (M.F.E.) within seven (7) days of the date of failure.
3. All defective parts must be made available by the dealer, for inspection by M.F.E. if required, and returned at the dealer's expense.
4. All warranty claims must be approved by M.F.E.
5. The labour and freight required to replace defective parts is not reimbursable.
6. Exchange, credit or warranty status will be based on the results of the inspection of damaged items by the manufacturer.
7. Credit will be issued if and when the warranty claim is approved and **MUST NOT** be deducted from the account by the dealer.
8. Products and/or parts not manufactured by M.F.E. are subject to their own manufacturer's warranty conditions.

**WARRANTY CONSIDERATION IS ONLY VALID WHEN THE WARRANTY REGISTRATION FORM HAS BEEN RECEIVED BY MARKET FARM EQUIPMENT.**



# **WARRANTY REGISTRATION**

**MARKET FARM EQUIPMENT LIMITED**  
**R.R. 1 DASHWOOD, ONTARIO, CANADA, N0M 1N0**  
**Fax: 519-238-6044 E-mail: mfeltd@execulink.com**

---

Purchaser's warranty protection on this equipment is valid only when this registration form is completed by the purchaser and returned to Market Farm Equipment Limited.

Date of purchase: \_\_\_\_\_

Type of equipment: \_\_\_\_\_

Model number: \_\_\_\_\_ Serial number: \_\_\_\_\_

## **PURCHASER'S SIGNATURE INDICATES:**

- Acceptance of equipment, fully assembled (    ) unassembled (    )
- Receipt of operator's manual
- Clear understanding of warranty
- Receipt of instructions on special safety equipment available
- Receipt of instructions on safe and proper operating procedures

## **PURCHASER:**

Name: \_\_\_\_\_

Signature: \_\_\_\_\_

Mailing Address: \_\_\_\_\_

Prov./State: \_\_\_\_\_ Postal/Zip Code: \_\_\_\_\_

Telephone number: \_\_\_\_\_

Purchased from: \_\_\_\_\_

## **THIS WARRANTY MUST BE VALIDATED BY THE MANUFACTURER**

It is valid only when a copy of the registration has been received by the manufacturer at address shown.

# **MARKET FARM EQUIPMENT LIMITED**

## **EXPRESS WARRANTY**

Market Farm Equipment Limited warrants against defects in construction and materials for a period of ONE year. We reserve the right to inspect and decide whether material or construction was faulty, or whether abuse or accident voids our guarantee.

This warranty does not cover a component which fails, malfunctions or is damaged as a result of (I) improper modification or repair, (II) accident, abuse or improper use, including loading beyond the specified maximum weights and requirements (III) improper or insufficient maintenance, or (IV) normal wear and tear.

**THIS WARRANTY IS EXPRESSLY IN LIEU OF ALL OTHER WARRANTIES OR CONDITIONS, EXPRESS, IMPLIED OR STATUTORY, INCLUDING ANY IMPLIED WARRANTY OF MERCHANTABILITY OR FITNESS FOR A PARTICULAR PURPOSE.**

In no way shall Market Farm Equipment Limited be liable for special, direct, incidental or consequential damages of any kind, including but not limited to labour charges.

The exclusive remedy under this warranty shall be repair or replacement of the defective component at Market Farm Equipment Limited's option. This is the entire agreement between Market Farm Equipment Limited and the owner about warranty. NO M.F.E. Ltd. employee or dealer is authorized to make additional warranty on behalf of Market Farm Equipment Limited.

(Fill in the following for future reference)

Serial number: \_\_\_\_\_

Date of purchase: \_\_\_\_\_

Purchased from: \_\_\_\_\_



# **SAFETY INFORMATION**

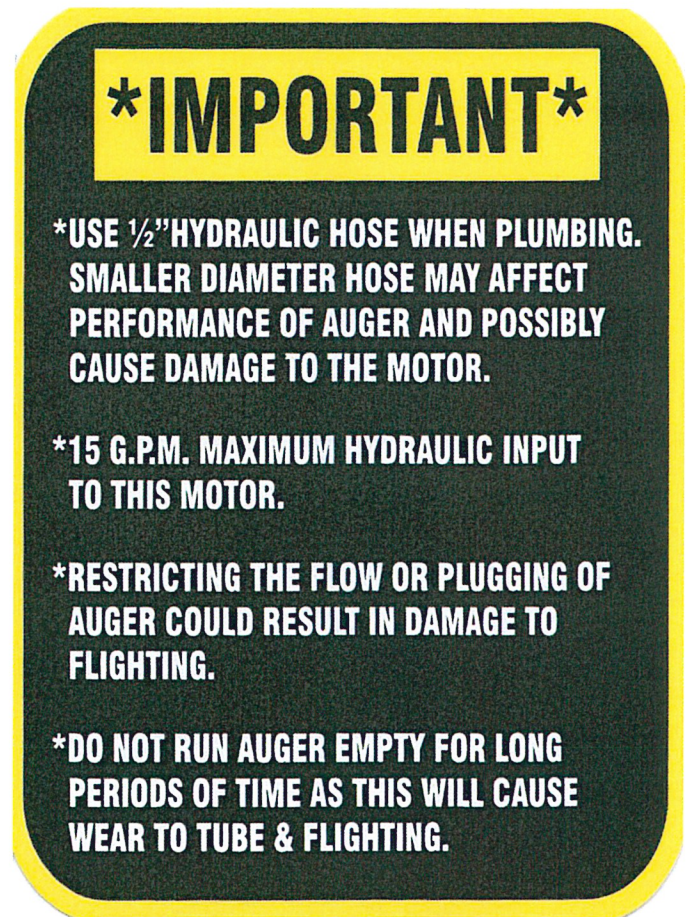
- Before using auger READ and UNDERSTAND SAFETY INSTRUCTIONS.
- After hydraulic lines are connected, run auger empty to ensure the flighting is rotating in the proper direction. (if ran backwards, damage may occur)
- Auger should be empty when moving or transporting.
- Hydraulic oil leaking under pressure can cause injury. Make sure all hydraulic connections are tight. Before disconnecting hydraulic lines, relieve pressure.
- Do not adjust, clean or service auger while it is running.
- Keep all safety shields in place. Replace any safety decals that become lost or damaged.
- Do not operate the auger in a manner that it was not intended for.
- When transporting, always keep auger in its lowest position.

## **HYDRAULIC SYSTEM OPERATING RESTRICTIONS**

**MAXIMUM FLOW – 20 G.P.M.    MAXIMUM PRESSURE – 2500 P.S.I.**

**MAXIMUM FLOW AND MAXIMUM PRESSURE conditions MUST NOT occur simultaneously. Damage will occur and warranty will be void. Use only ½" hydraulic hose when plumbing. Smaller hose will create heat that will burn out the hydraulic motor and warranty will be void.**

**Do not tee into hydraulic lift cylinders on planters or drills.**









# SEED FILL CROSSAUGER PARTS LIST

## CIH, G.P., SUNFLOWER, KRAUSE & TYE

REF #	PRO CD	DESCRIPTION	PRO CD	DESCRIPTION
2	195	Crossauger hopper & lid	63	Lock handle
3	196	6" plastic drop with screws	64	Spring
4	197	6" slide for drop	65	Crossarm LOCKING (11") (GP Pre '94 & Tye V, Marliss, Sunflower)
5	547	Safety grille	66	Crossarm REGULAR (11") (GP Pre '94 & Tye V, Marliss, Sunflower)
6	783	UHMW plastic washer	67	Locking post (Tye V, Marliss, Sunflower)
7	957	Pivot bracket clamp band	68	Regular post (Tye V, Marliss, Sunflower)
7A	957B	Pivot bracket clamp band with handl	69	U-bolt (Tye V, Marliss, Sunflower)
8	581	Valve handle with black knob		
10		UHMW plastic disc		
13		Lock guide bushing		
14	398	Plastic overflow end cap		
15		Adjustable stop		
16	*389	4" UHMW plastic sleeve		
19M	395	6.0 cu. in. hydraulic motor (manifold mount)		
22M	117	'H' valve (manifold mount)		
25	198	6" motor mounting plate		
27	181	6" 11 ga. 1/2 clamp band		
33*	193	6" plastic auger tube		
34B*	657	6" bristle auger flighting		
34P*	153	6" plastic auger flighting (not shown)		
34S*	834	6" cupped steel auger flighting (not shown)		
40		U-bolt (GP "00")		
42		U-bolt (CIH 5400)		
44		U-bolt (GP "10")		
46		Locking post (GP Pre '94 & "00" series)		
47		Regular post (GP Pre '94 & "00" series)		
48		Frame weldment (GP Pre '94)		
49		U-bolt (GP Pre '94)		
50		Crossarm LOCKING (13") (GP "00" & "10")		
51		Crossarm REGULAR (13") (GP "00" & "10")		
52		Frame weldment (GP "00" series)		
53		Locking post (GP "10" series)		
54		Regular post (GP "10" series)		
55		Locking post (CIH 5400)		
56		Regular post (CIH 5400)		
57		Offset frame weldment (CIH 5400)		
58		Regular frame weldment (CIH 5400)		
59		Locking post (Krause 5200)		
60		Regular post (Krause 5200)		
62		Plastic angle		

## SEED FILL CROSSAUGER MOUNTING INSTRUCTIONS FOR 3 POINT HITCH, MINIMUM TILL DRILLS

1. Mount frame weldments as shown in diagram. \*

*NOTE: CROSSAUGER FOR TYE SERIES V DRILL, MARLISS, SUNFLOWER AND GREAT PLAINS "10" SERIES DOES NOT REQUIRE WELDMENTS AS THE UPRIGHT POSTS MOUNT ON REAR TOOL BAR.*

2. Mount upright posts to weldments as shown in diagram. (Make sure posts are perfectly plumb).
3. Remove adjustable stops (15) and slide crossarms onto upright posts making sure plastic washers (6) and plastic sleeves (16) are in place. The guide bushing (13) may need to be turned to allow guide to fit between lock pins on crossarm, on locking post.
4. Set auger on crossarms making sure plastic discs (10) are on bolts before going through holes in crossarms. (Loosening of clamp bands may be necessary). Tighten nut on bolt until it is up against crossarm. DO NOT OVER TIGHTEN.
5. Mount adjustable stops (15) loosely.
6. Swing auger as far as needed to clear the hopper lid, set adjustable stops against crossarms, then tighten.
7. Swing auger to filling position so that crossarms are at 90° to the auger tube, then tighten ½" bolt on guide bushing.
8. Swing auger back and forth a few times to check for proper alignment.

*\* On 20' drills, mount first post weldment and vertical auger weldment according to diagram. Mount second and third post weldments according to clamp band positions on seed fill crossauger.*

*\* If drill is equipped with a grass seeder it must be spaced out to allow posts to be put between grass seeder and grain tank.*



**VERTICAL AUGER MOUNTING INSTRUCTIONS FOR  
3 POINT HITCH, MINIMUM TILL DRILL**

- 1. Mount frame weldment as shown in diagram.**
- 2. Slide offset swing arm (12) into frame weldment. Take care not to damage plastic sleeve (1) inside round tube.**
- 3. Slide height adjuster (3) into swing arm.**
- 4. Swing auger into working position and adjust for proper height.**
- 5. Swing auger into transport position making sure motor is not past end of drill, mount transport bracket (17) in desired location. (On most drills the transport bracket mounts on the catwalk)**
- 6. Place auger in transport bracket wedge lock receiver (9) and tighten using lock bolt (5) as well tighten the lock bolt (5) on the swing arm. Rotate hopper to eliminate dirt and water buildup.**

## **SEED FILL CROSSAUGER MOUNTING INSTRUCTIONS FOR 15' Krause 5200 Drill**

1. Place upright posts (59&60) on Double Hat Bar and using bottom plate as template mark holes (as per measurements) and drill out to ½".
2. Using 4 - ½" x 2" bolts, nuts and lockwashers mount posts in place.
3. Remove adjustable stops (15) and slide crossarms (11&12) onto upright posts making sure plastic washers (6) and plastic sleeves (16) are in place. The guide bushing (13) may need to be turned to allow guide to fit between lock pins on crossarm.
4. Set auger on crossarms making sure plastic discs (10) are on bolts before going through holes in crossarms. (Loosening of clamp bands may be necessary). Tighten nut on bolt until it is up against crossarm. **DO NOT OVER TIGHTEN.**
5. Mount adjustable stops (15) loosely.
6. Swing auger as far as needed to clear the hopper lid, set adjustable stops against crossarms, then tighten.
7. Swing auger to filling position so that crossarms are at 90° to the auger tube, then tighten ½" bolt on guide bushing.
8. Swing auger back and forth a few times to check for proper alignment.

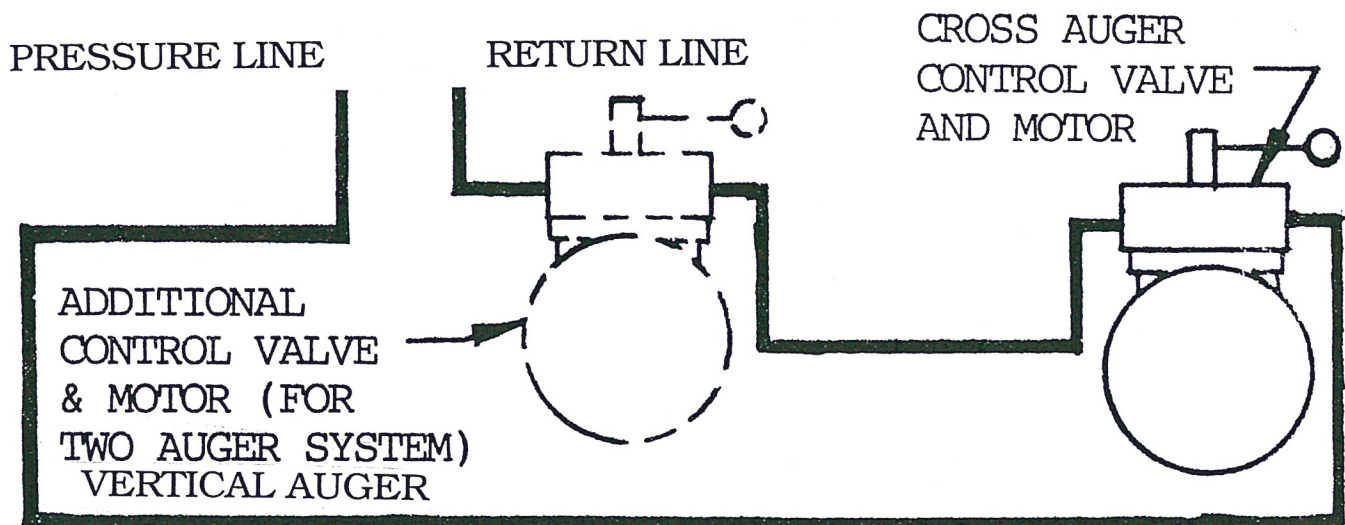
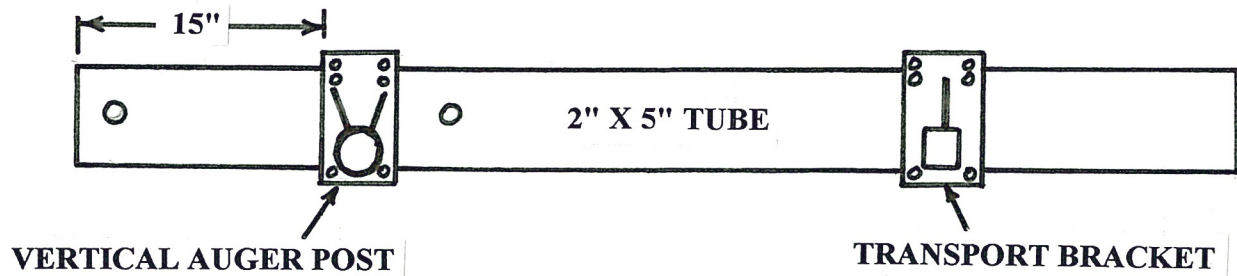
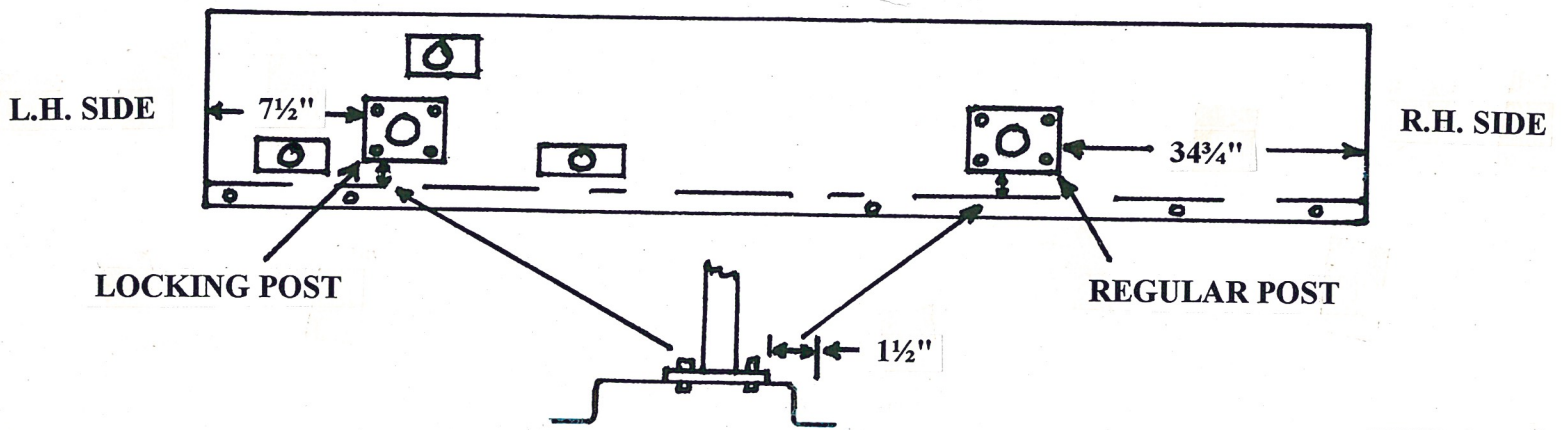
## **VERTICAL AUGER MOUNTING INSTRUCTIONS FOR Krause 5200 Drill**

1. Mount vertical auger post (36) to 5" x 2" handrail frame and attach with 4 - ½" x 3½" bolts, nuts and lockwashers as per diagram.
2. Slide swing arm (2) onto vertical auger post (with 2" x 2" square tube at bottom) taking care not to damage plastic sleeve (1) inside round tube.
3. Slide height adjuster (3) into swing arm.
4. Swing auger into working position and adjust for proper height.
5. Swing auger into transport position making sure motor is not past end of drill, mount transport bracket to 5" x 2" handrail frame at a desired location.
6. Place auger in transport bracket wedge lock receiver (9) and tighten using lock bolt (5) as well tighten the lock bolt (5) on the swing arm. Rotate hopper to eliminate dirt and water buildup.

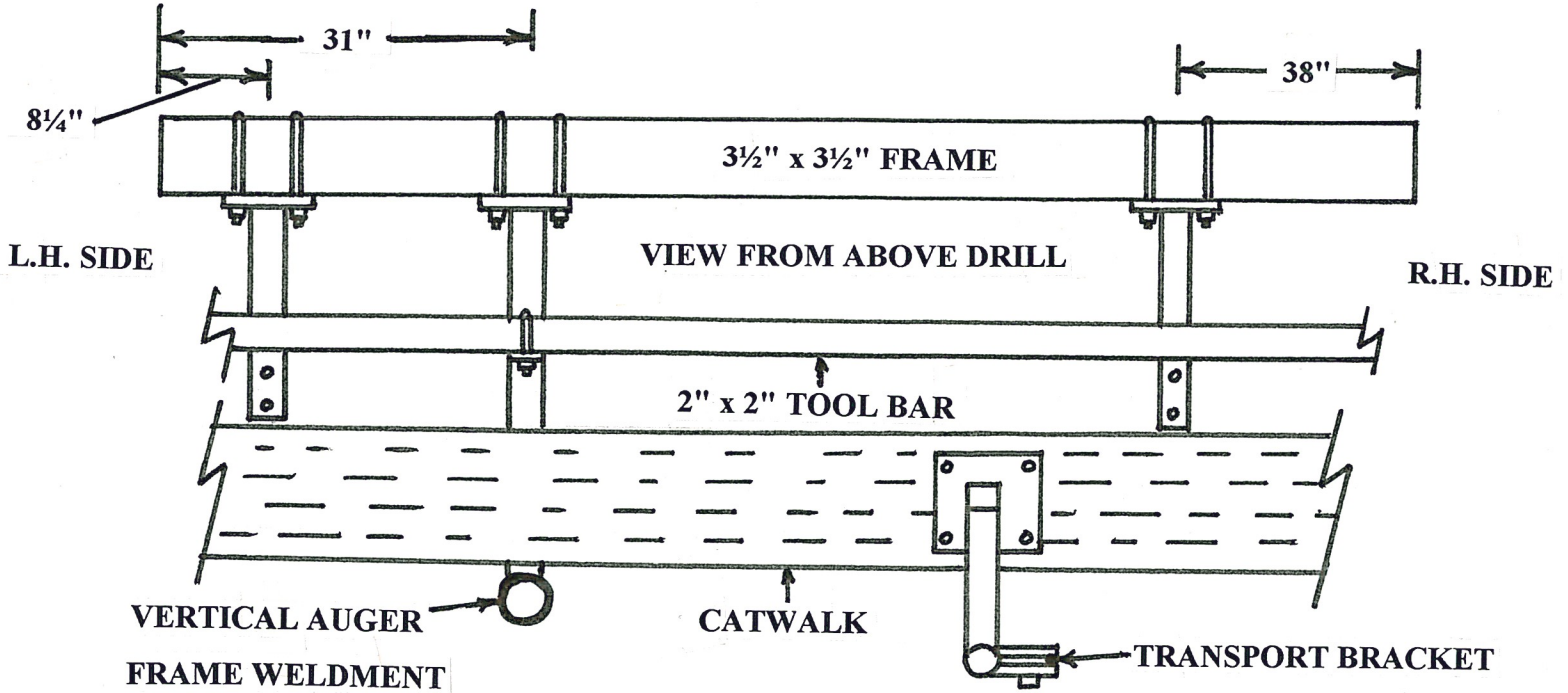


15' KRAUSE 5200 POST POSITIONS

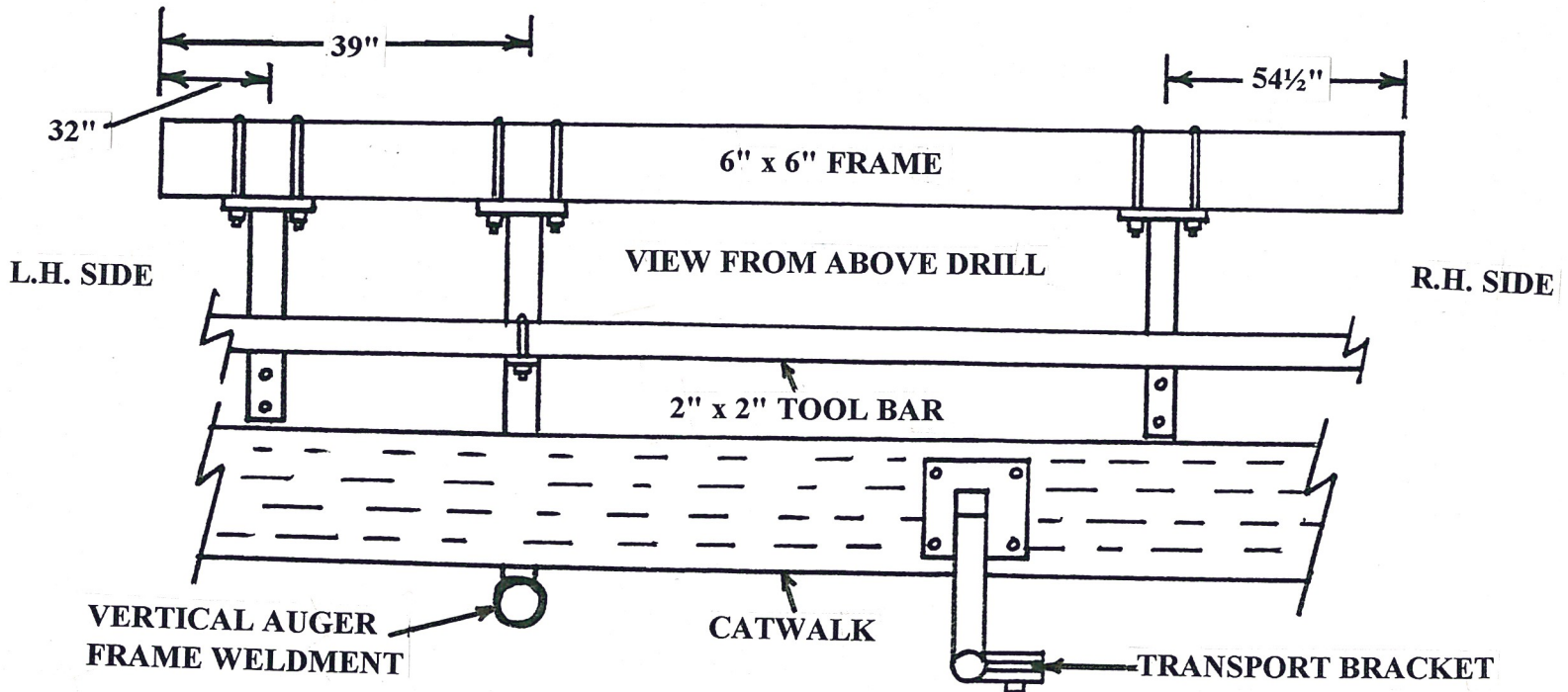
VIEW FROM ABOVE



## MOUNTING DIAGRAM FOR FRAME WELDMENTS GREAT PLAINS PRE 94



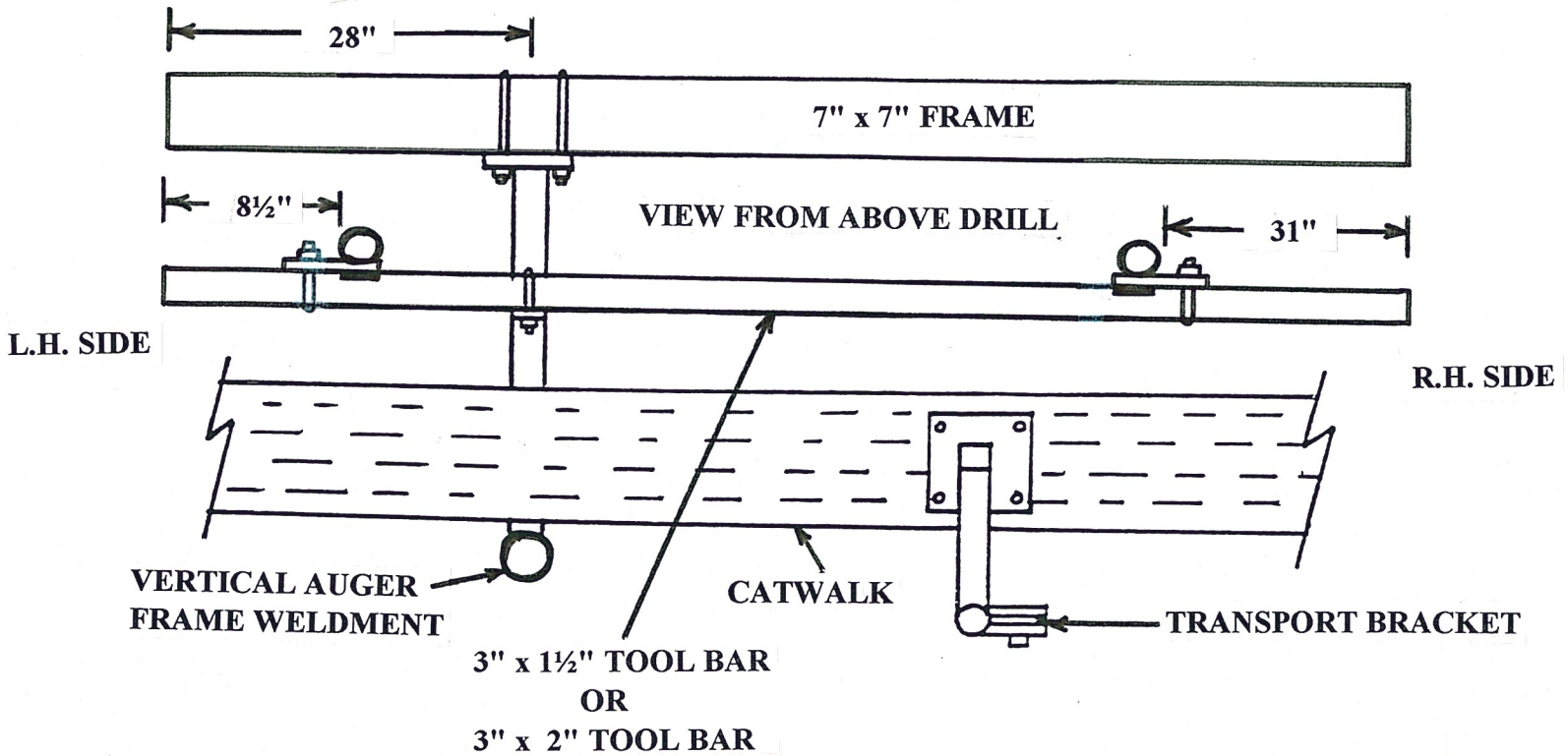
## MOUNTING DIAGRAM FOR FRAME WELDMENTS GREAT PLAINS '00' SERIES



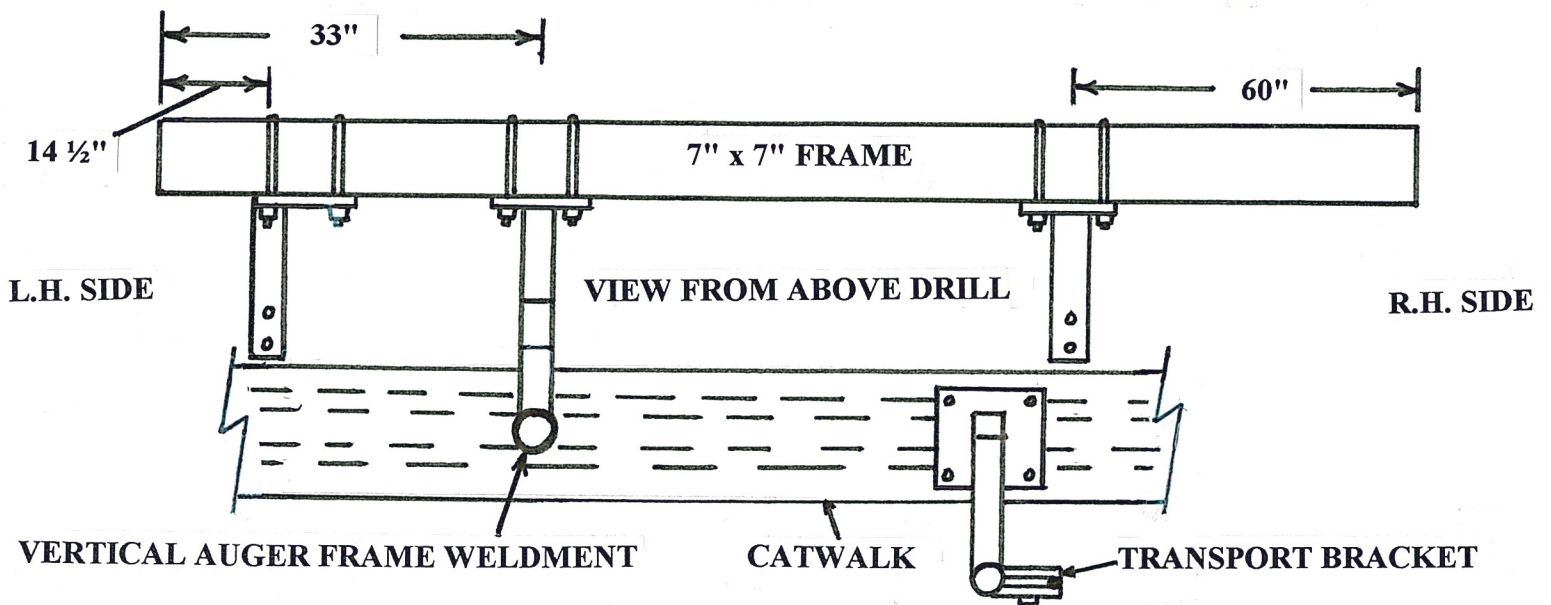
**GREAT PLAINS '10' SERIES POSTS MOUNT ON 2" X 2" TOOL BAR  
BUT AT SAME LOCATION AS '00' SERIES FRAME WELDMENTS**



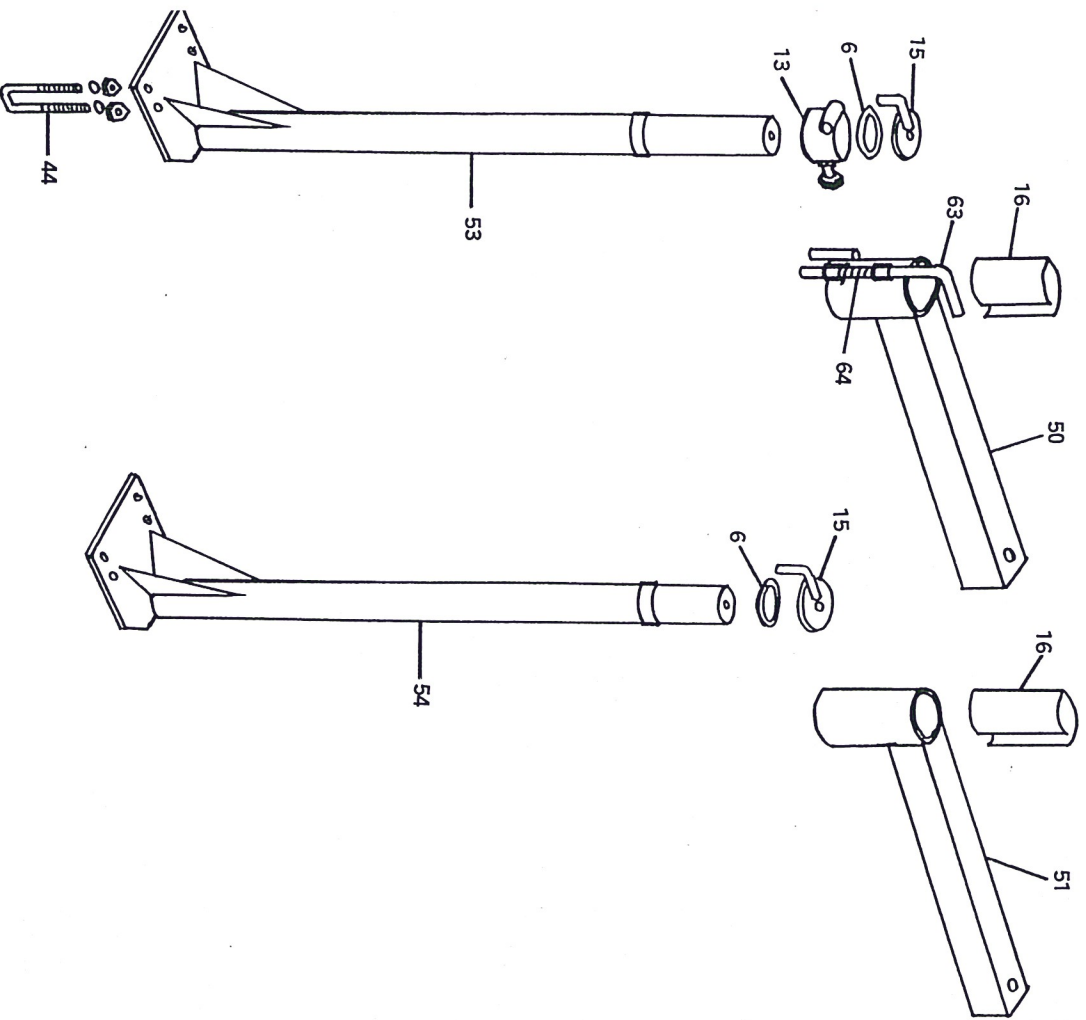
# **MOUNTING DIAGRAM FOR POSTS ON TYE V, MARLISS AND SUNFLOWER**



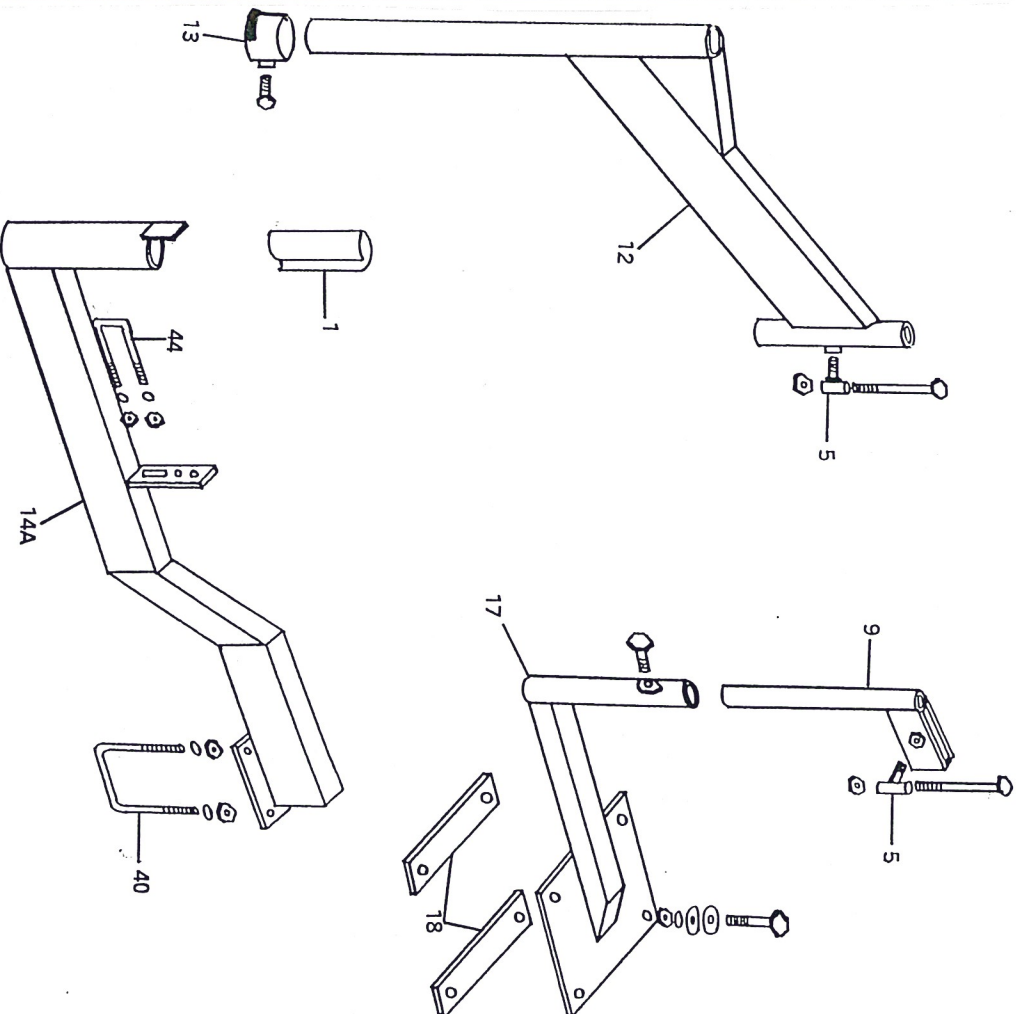
## **MOUNTING DIAGRAM FOR FRAME WELDMENTS CIH 5400**



# SEED FILL CROSSAUGER GREAT PLAINS "10" SERIES

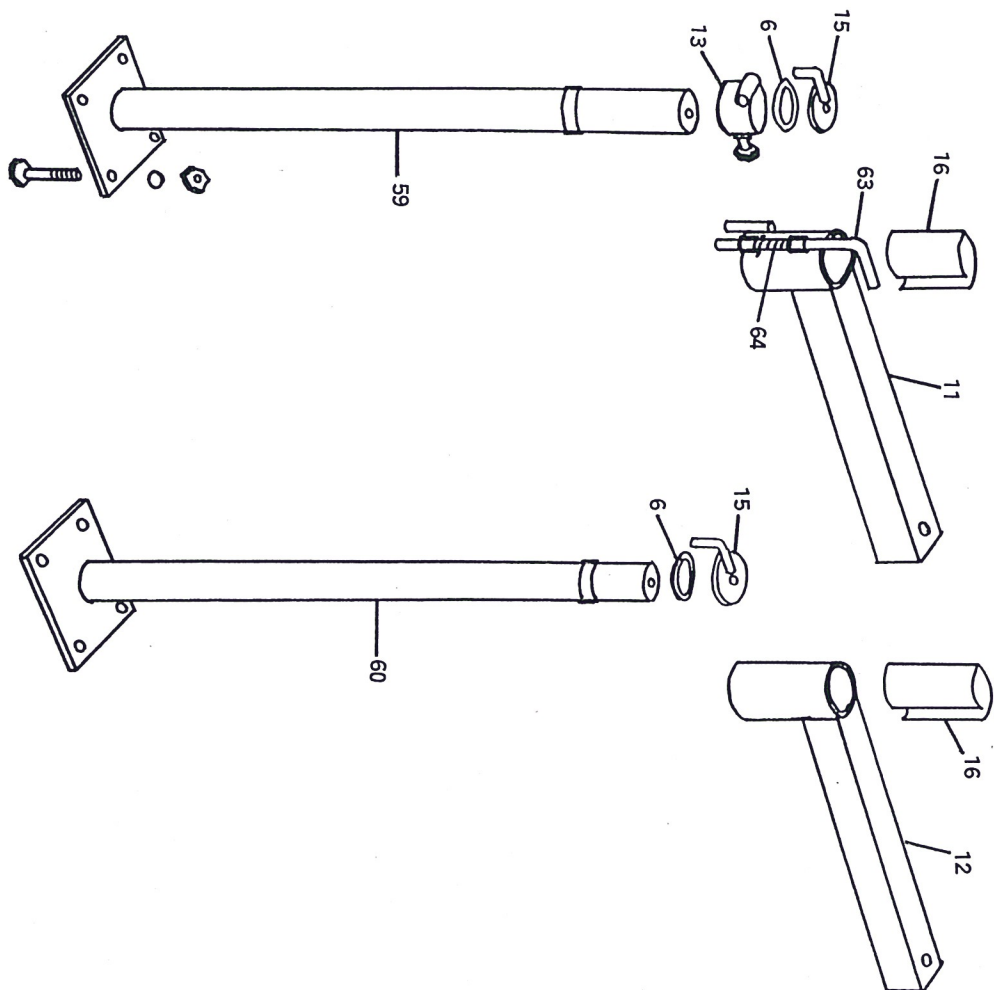


# SEED FILL VERTICAL AUGER GREAT PLAINS "10" SERIES

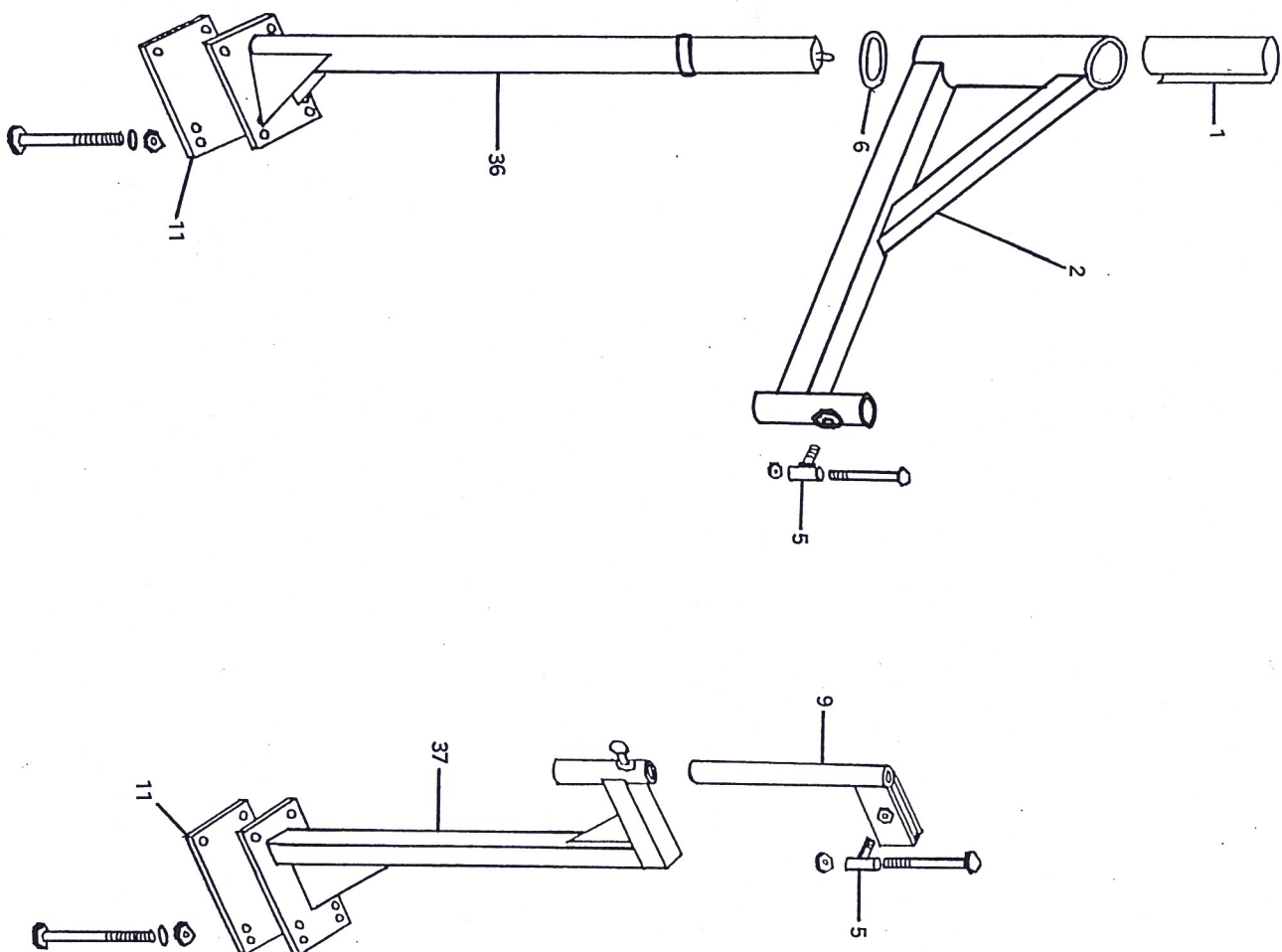




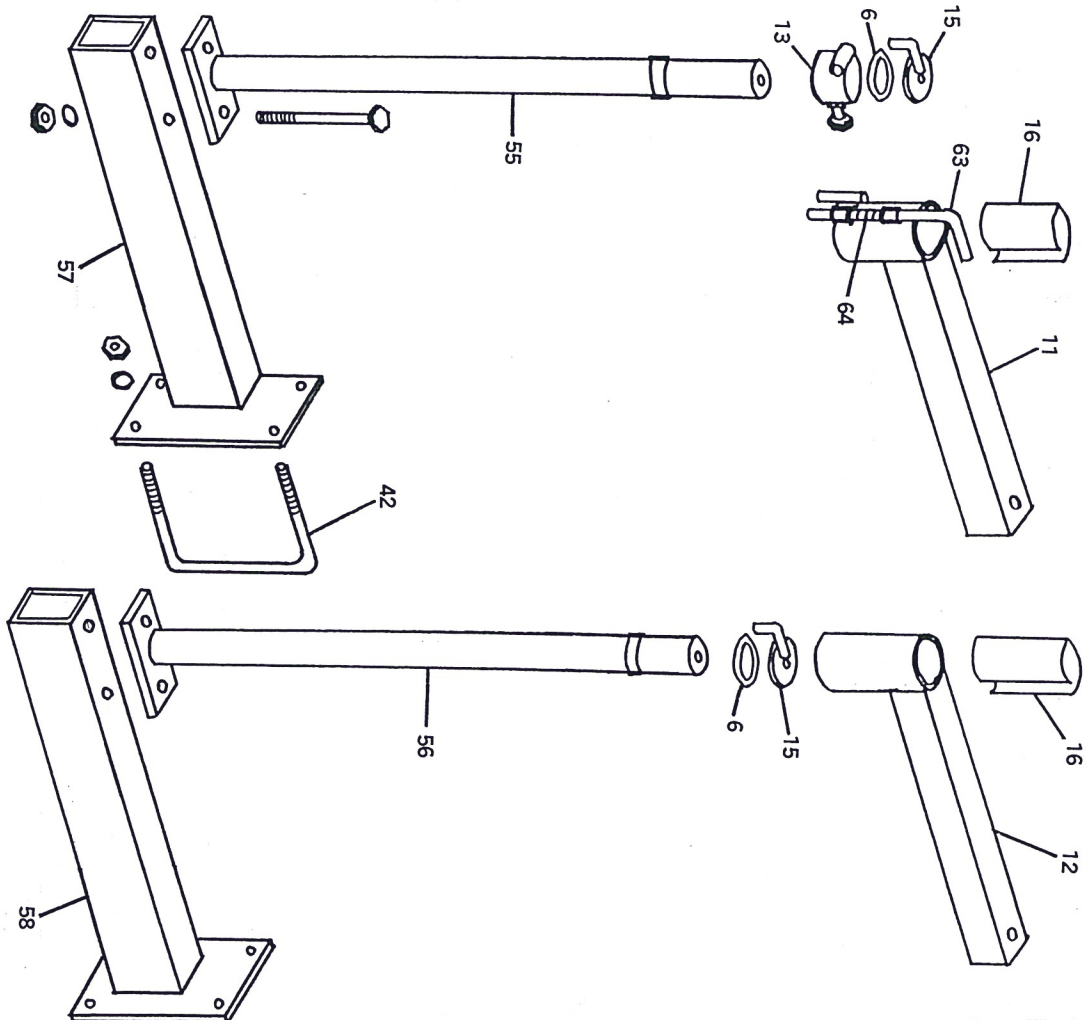
# SEED FILL CROSSAUGER KRAUSE 5200



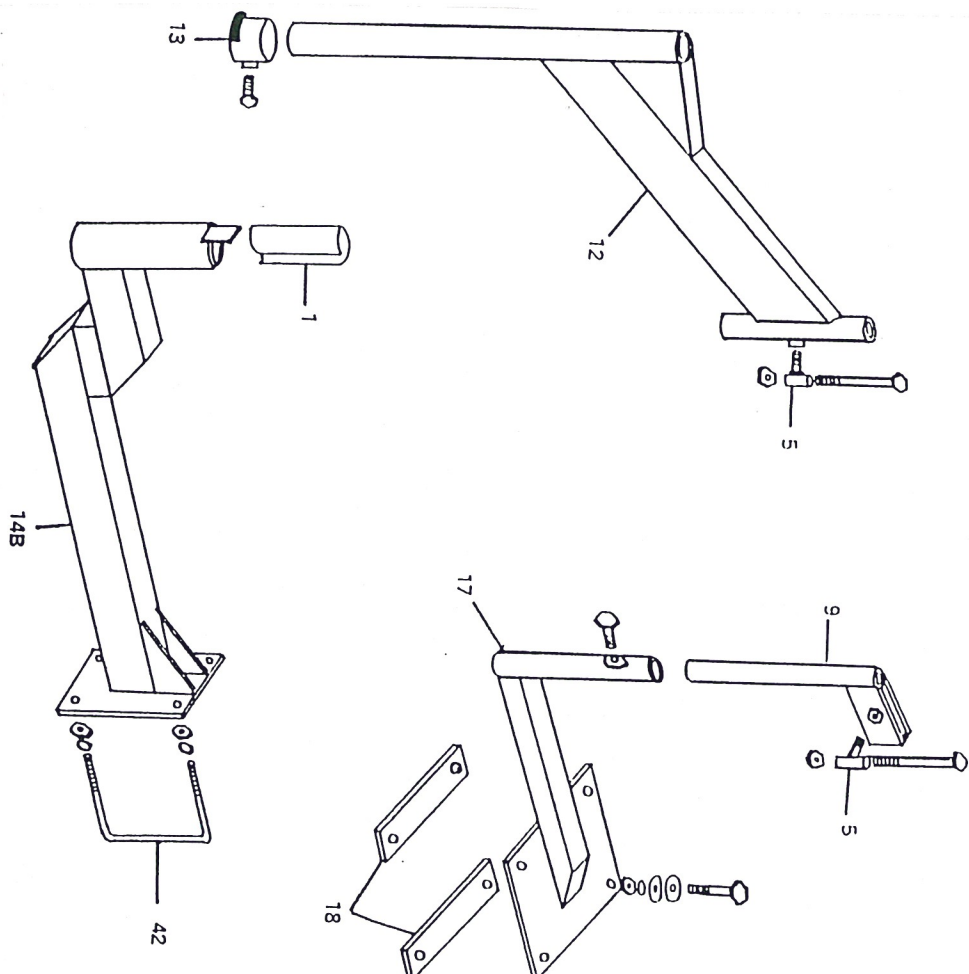
# SEED FILL VERTICAL AUGER KRAUSE 5200



# SEED FILL CROSSAUGER CIH 5400

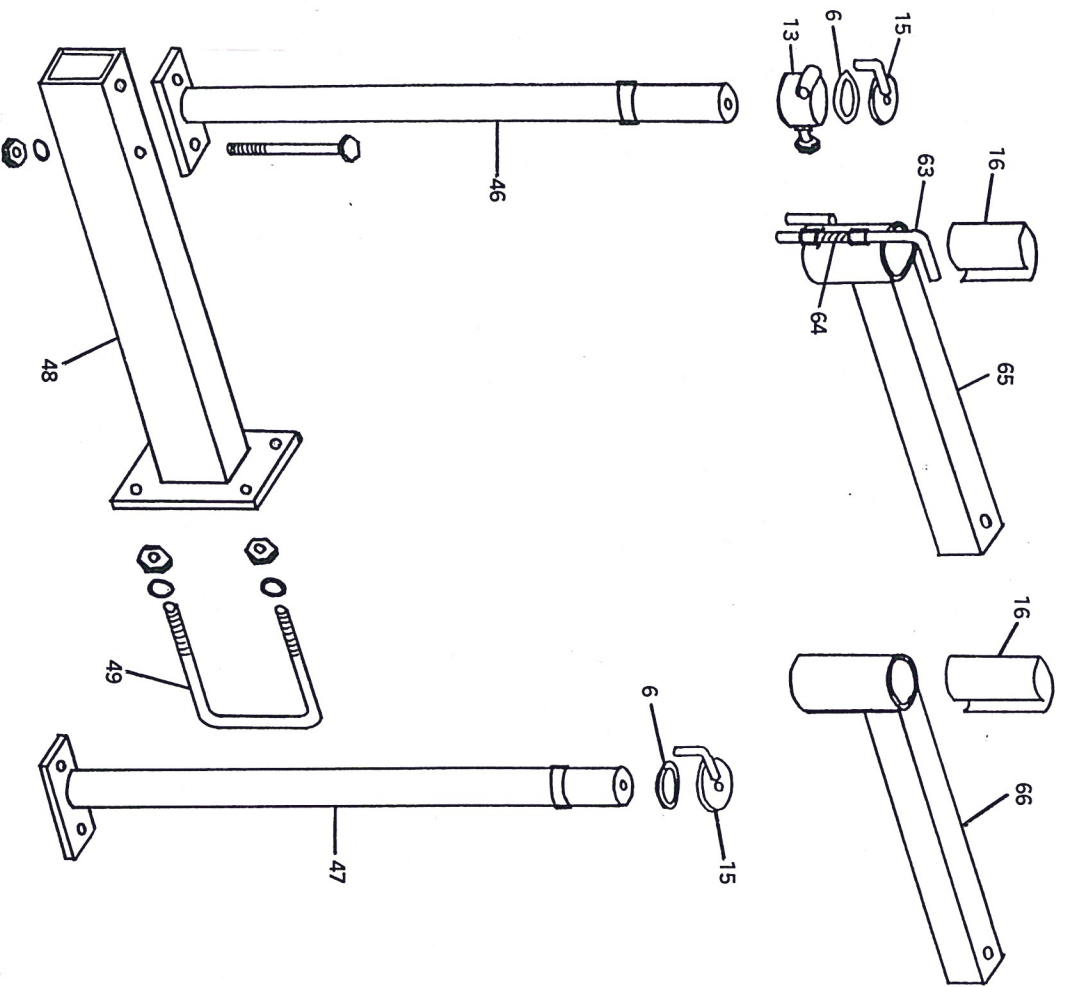


# SEED FILL VERTICAL AUGER CIH 5400

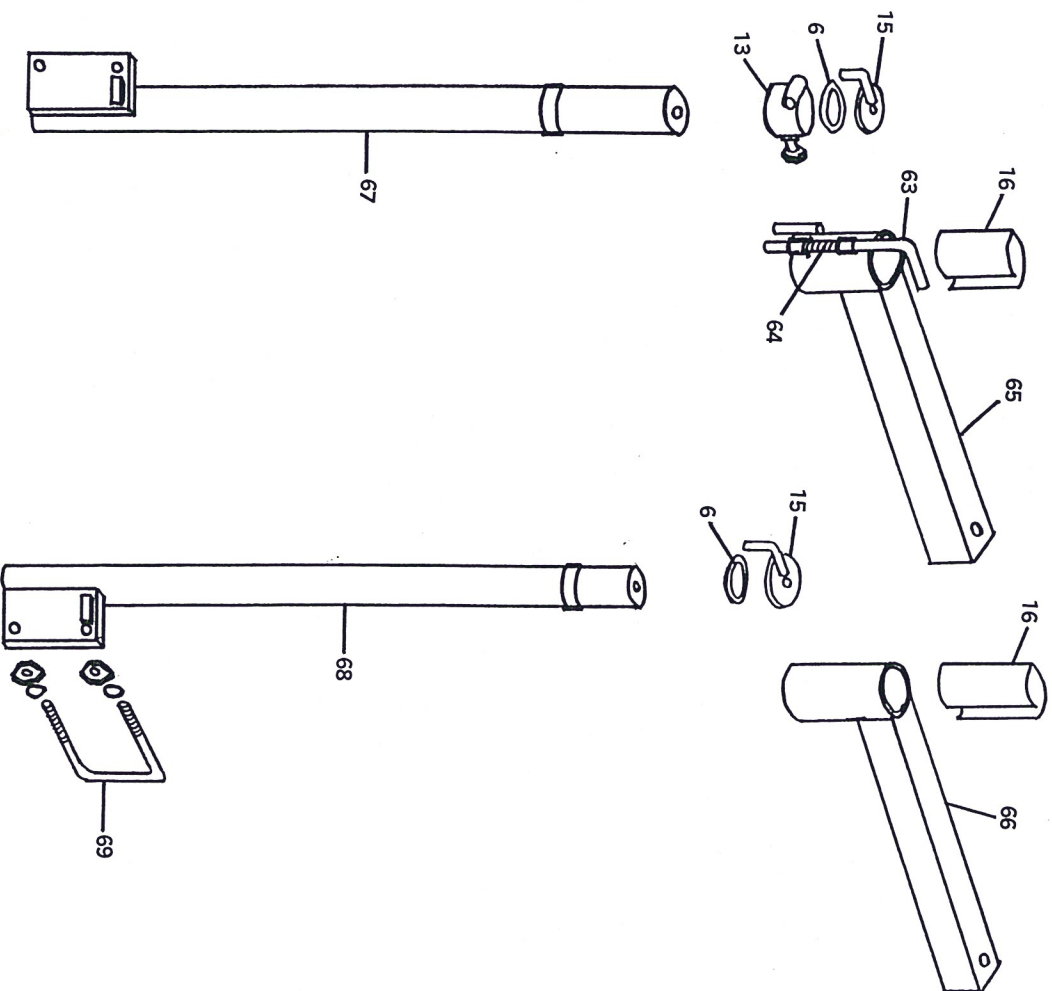




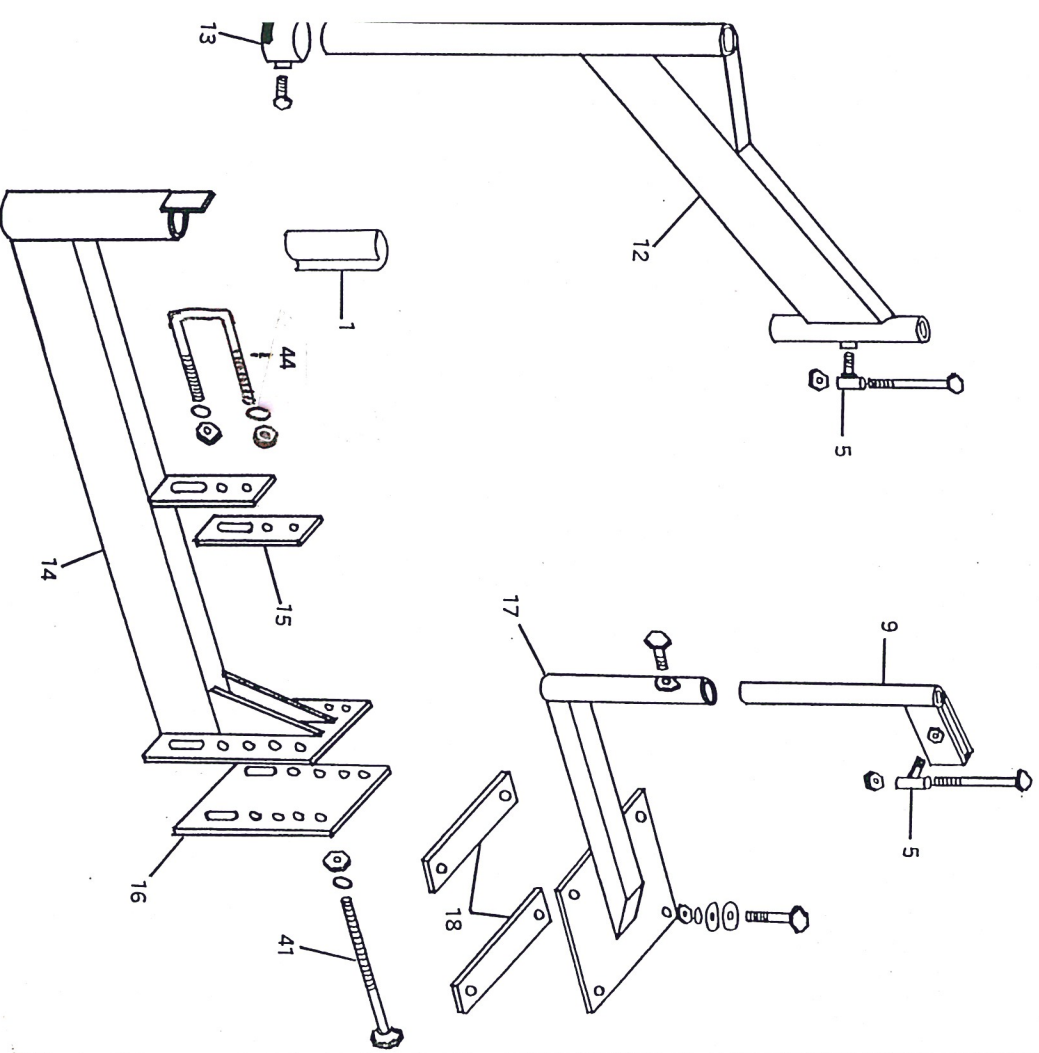
# SEED FILL CROSSAUGER GREAT PLAINS PRE '94



# SEED FILL CROSSAUGER TYE V, MARLISS & SUNFLOWER



# SEED FILL VERTICAL AUGER GREAT PLAINS PRE '94, "00" SERIES & TYE V SUNFLOWER



# SEED FILL CROSSAUGER GREAT PLAINS "00" SERIES

