



**OPERATOR'S MANUAL
SET-UP INSTRUCTIONS
&
PARTS LIST**

**18' SINGLE AUGER SEED-FILL
FOR KINZE 3600 ASD**



MARKET FARM EQUIPMENT LIMITED, R.R.#1 DASHWOOD, ONTARIO, CANADA

TEL# 519-238-2301 FAX# 519-238-6044 E-MAIL: mfeltd@execulink.com

www.marketfarmequipment.com

"SERVING THE FARM INDUSTRY SINCE 1962"

WARRANTY PROCEDURE

MARKET FARM EQUIPMENT WARRANTS THEIR MANUFACTURED PRODUCTS TO BE FROM DEFECTS IN MATERIAL AND WORKMANSHIP FOR A PERIOD OF ONE (1) YEAR AFTER THE DATE OF PURCHASE TO THE FIRST END USER AND IS SUBJECT TO THE FOLLOWING CONDITIONS.

1. Damage caused by improper use, negligence, or operation beyond rated capacity, improper set-up, adjustment, or any unauthorized modifications made by the dealer or customer, shall void this warranty.
2. Notification of damage or warranty claims must be submitted to Market Farm Equipment (M.F.E.) within seven (7) days of the date of failure.
3. All defective parts must be made available by the dealer, for inspection by M.F.E. if required, and returned at the dealer's expense.
4. All warranty claims must be approved by M.F.E.
5. The labour and freight required to replace defective parts is not reimbursable.
6. Exchange, credit or warranty status will be based on the results of the inspection of damaged items by the manufacturer.
7. Credit will be issued if and when the warranty claim is approved and **MUST NOT** be deducted from the account by the dealer.
8. Products and/or parts not manufactured by M.F.E. are subject to their own manufacturer's warranty conditions.

WARRANTY CONSIDERATION IS ONLY VALID WHEN THE WARRANTY REGISTRATION FORM HAS BEEN RECEIVED BY MARKET FARM EQUIPMENT.

WARRANTY REGISTRATION

MARKET FARM EQUIPMENT LIMITED
R.R. 1 DASHWOOD, ONTARIO, CANADA, N0M 1N0
Fax: 519-238-6044 E-mail: mfeltd@execulink.com

Purchaser's warranty protection on this equipment is valid only when this registration form is completed by the purchaser and returned to Market Farm Equipment Limited.

Date of purchase: _____

Type of equipment: _____

Model number: _____ **Serial number:** _____

PURCHASER'S SIGNATURE INDICATES:

- **Acceptance of equipment, fully assembled () unassembled ()**
- **Receipt of operator's manual**
- **Clear understanding of warranty**
- **Receipt of instructions on special safety equipment available**
- **Receipt of instructions on safe and proper operating procedures**

PURCHASER:

Name: _____

Signature: _____

Mailing Address: _____

Prov./State: _____ **Postal/Zip Code:** _____

Telephone number: _____

Purchased from: _____

THIS WARRANTY MUST BE VALIDATED BY THE MANUFACTURER

It is valid only when a copy of the registration has been received by the manufacturer at address shown.

MARKET FARM EQUIPMENT LIMITED

EXPRESS WARRANTY

Market Farm Equipment Limited warrants against defects in construction and materials for a period of ONE year. We reserve the right to inspect and decide whether material or construction was faulty, or whether abuse or accident voids our guarantee.

This warranty does not cover a component which fails, malfunctions or is damaged as a result of (I) improper modification or repair, (II) accident, abuse or improper use, including loading beyond the specified maximum weights and requirements (III) improper or insufficient maintenance, or (IV) normal wear and tear.

THIS WARRANTY IS EXPRESSLY IN LIEU OF ALL OTHER WARRANTIES OR CONDITIONS, EXPRESS, IMPLIED OR STATUTORY, INCLUDING ANY IMPLIED WARRANTY OF MERCHANTABILITY OR FITNESS FOR A PARTICULAR PURPOSE.

In no way shall Market Farm Equipment Limited be liable for special, direct, incidental or consequential damages of any kind, including but not limited to labour charges.

The exclusive remedy under this warranty shall be repair or replacement of the defective component at Market Farm Equipment Limited's option. This is the entire agreement between Market Farm Equipment Limited and the owner about warranty. NO M.F.E. Ltd. employee or dealer is authorized to make additional warranty on behalf of Market Farm Equipment Limited.

(Fill in the following for future reference)

Serial number: _____

Date of purchase: _____

Purchased from: _____

SAFETY INFORMATION

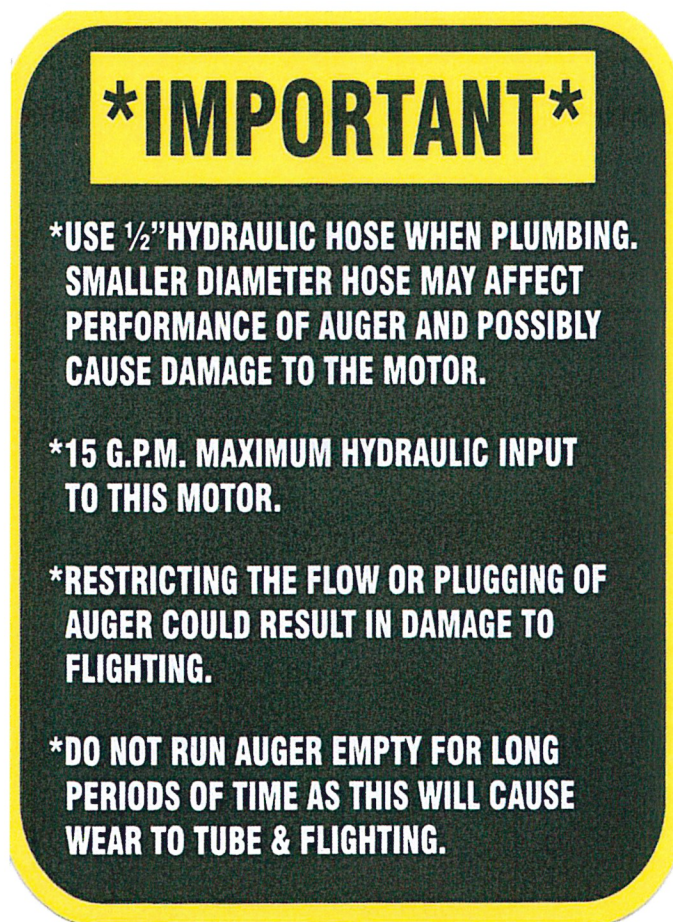
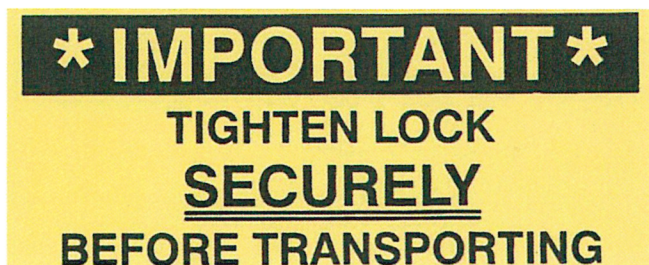
- Before using auger READ and UNDERSTAND SAFETY INSTRUCTIONS.
- After hydraulic lines are connected, run auger empty to ensure the flighting is rotating in the proper direction. (if ran backwards, damage may occur)
- Auger should be empty when moving or transporting.
- Hydraulic oil leaking under pressure can cause injury. Make sure all hydraulic connections are tight. Before disconnecting hydraulic lines, relieve pressure.
- Do not adjust, clean or service auger while it is running.
- Keep all safety shields in place. Replace any safety decals that become lost or damaged.
- Do not operate the auger in a manner that it was not intended for.
- When transporting, always keep auger in its lowest position.

HYDRAULIC SYSTEM OPERATING RESTRICTIONS

MAXIMUM FLOW – 20 G.P.M. MAXIMUM PRESSURE – 2500 P.S.I.

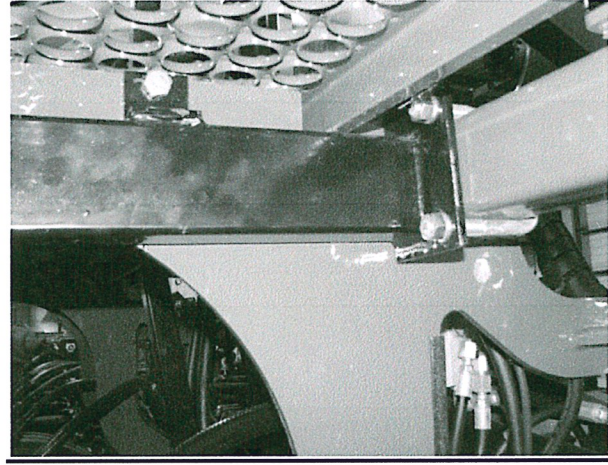
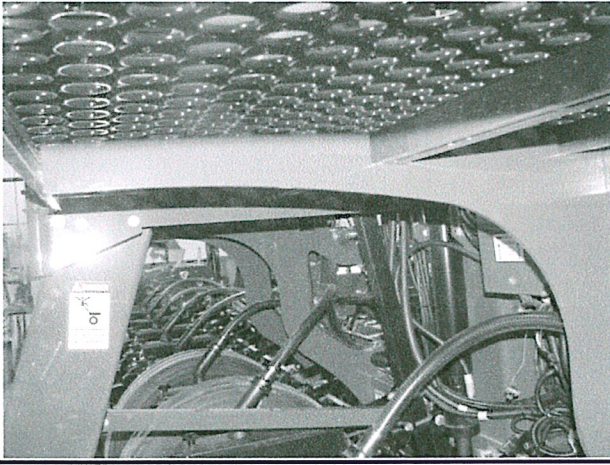
MAXIMUM FLOW AND MAXIMUM PRESSURE conditions MUST NOT occur simultaneously. Damage will occur and warranty will be void. Use only ½" hydraulic hose when plumbing. Smaller hose will create heat that will burn out the hydraulic motor and warranty will be void.

Do not tee into hydraulic lift cylinders on planters or drills.



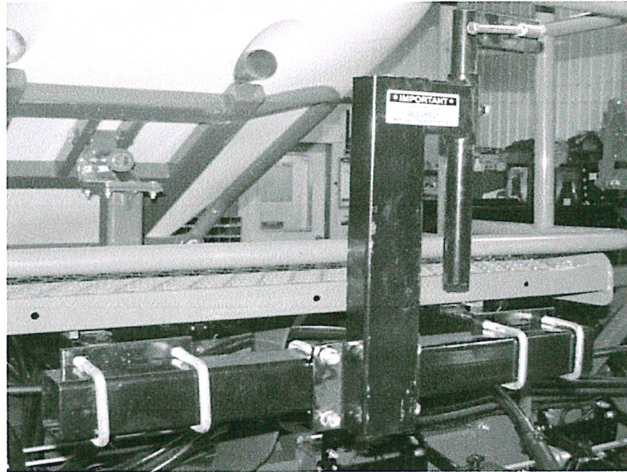
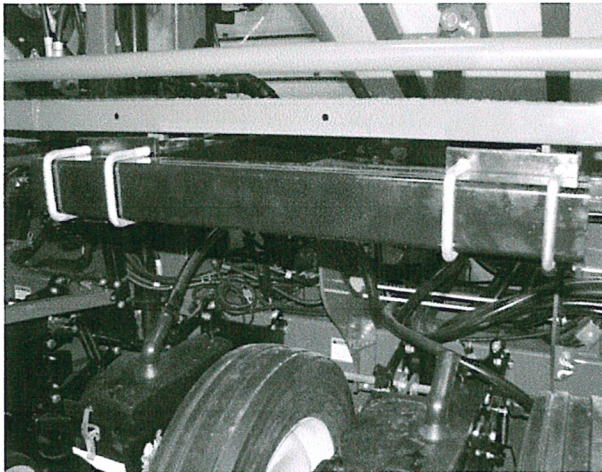
18' SINGLE AUGER SEED FILL MOUNTING INSTRUCTIONS FOR KINZE 3600 ASD PLANTER

1: Standing at the rear of the planter, locate the 4 curved supports under the catwalk. 2 will be to the left of the ladder and 2 will be to the right. The sub-frames mount on the inside of these sets of supports.



2: There are 2 right and 2 left sub-frames. Mount to rear 3" x 3" frame with 3" U-bolt as shown above and finger tighten. This will help hold the sub-frame in place while you mark the 2 holes that need to be drilled in the curved support. Level and mark holes. Remove sub-frame and drilled the 2- 9/16" holes. Mount sub-frame but do not tighten. Repeat steps for remaining 3 sub-frames.

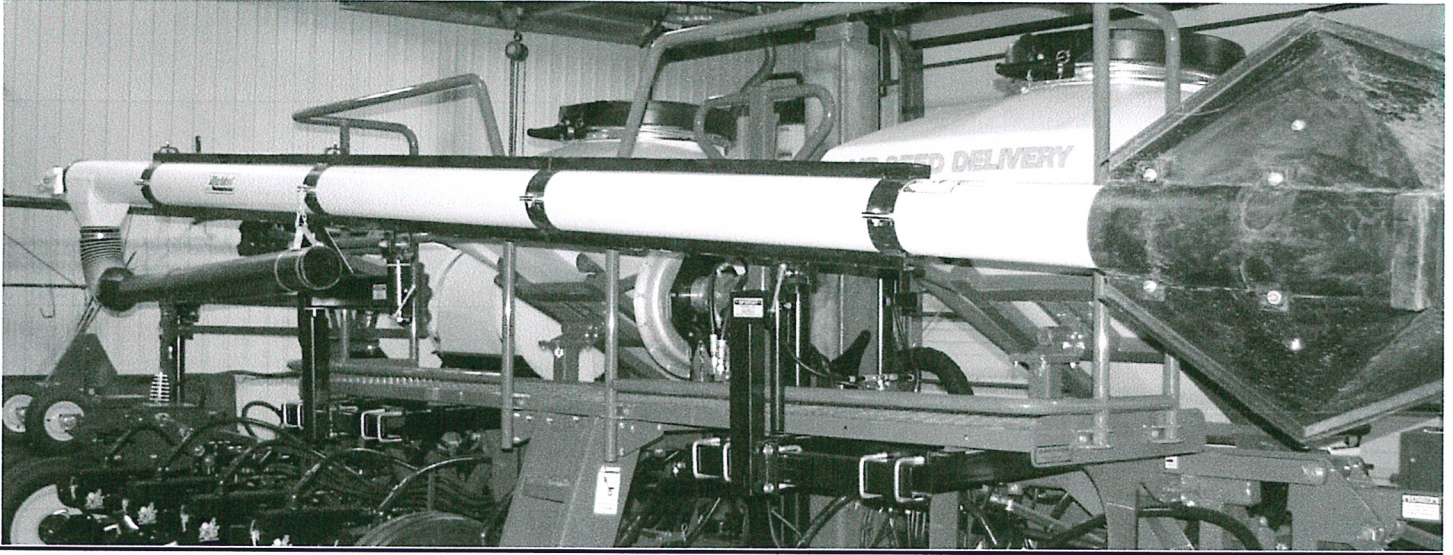
3: Mount the 2 - 3" x 3" tubes to the sub-frames using the 3" U-bolts. Level and tighten all bolts on the sub-frames and then tighten the U-bolts on the 3" tubes.



4: The main post and swing arm will mount on the left sub-frame. When mounting the swing arm onto the main post make sure not to damage the plastic sleeve inside. The transport bracket will mount on the right as shown above. Both will mount approximately in the middle of each sub-frame.

5: Remove lock cap from the bottom of the swivel tube located on the support channel of the auger. With assistance, lift auger and slide swivel tube into swing arm on the main post. Secure with lock cap.

6: Swing auger into transport position and secure with wedge lock tab receiver. (The position of the transport bracket may have to be adjusted at this time)



7: Attach telescoping downspout and secure handle along with the control rope using the chain and snap clip. Mount hopper at bottom of auger. Tighten bolts on hopper tight enough so that the clamp bands will not shift on either side of the plastic stop but will still allow the hopper to rotate.

8: When plumbing hydraulic motor, use ½" hoses (not supplied with auger). The motor end of the hydraulic hose requires a 90 degree swivel fitting with ½" NPT.

Operating instructions:

1: Loosen lock bolts on the swing arm and the transport bracket. Raise auger out of the transport bracket and swing into desired fill location.

2: Unhook the telescoping downspout and control rope. Position downspout over either seed box and using the control rope turn on auger. Proper filling requires the operator to stay with and control the downspout at all times. Leaving the downspout unattended may cause the auger to plug causing damage to the flighting and/or the seed.

3: When replacing auger into transport position, secure telescoping downspout and control rope with chain and snap clip. Swing auger into transport position placing the wedge lock tab on auger in the receiver on the transport bracket. Secure auger by tightening both the lock bolt on the swing arm and the transport bracket. Failure to tighten lock bolts may allow movement of the auger during transport causing stress on mounting hardware and possible damage to the auger, as well as endangering the lives of others.

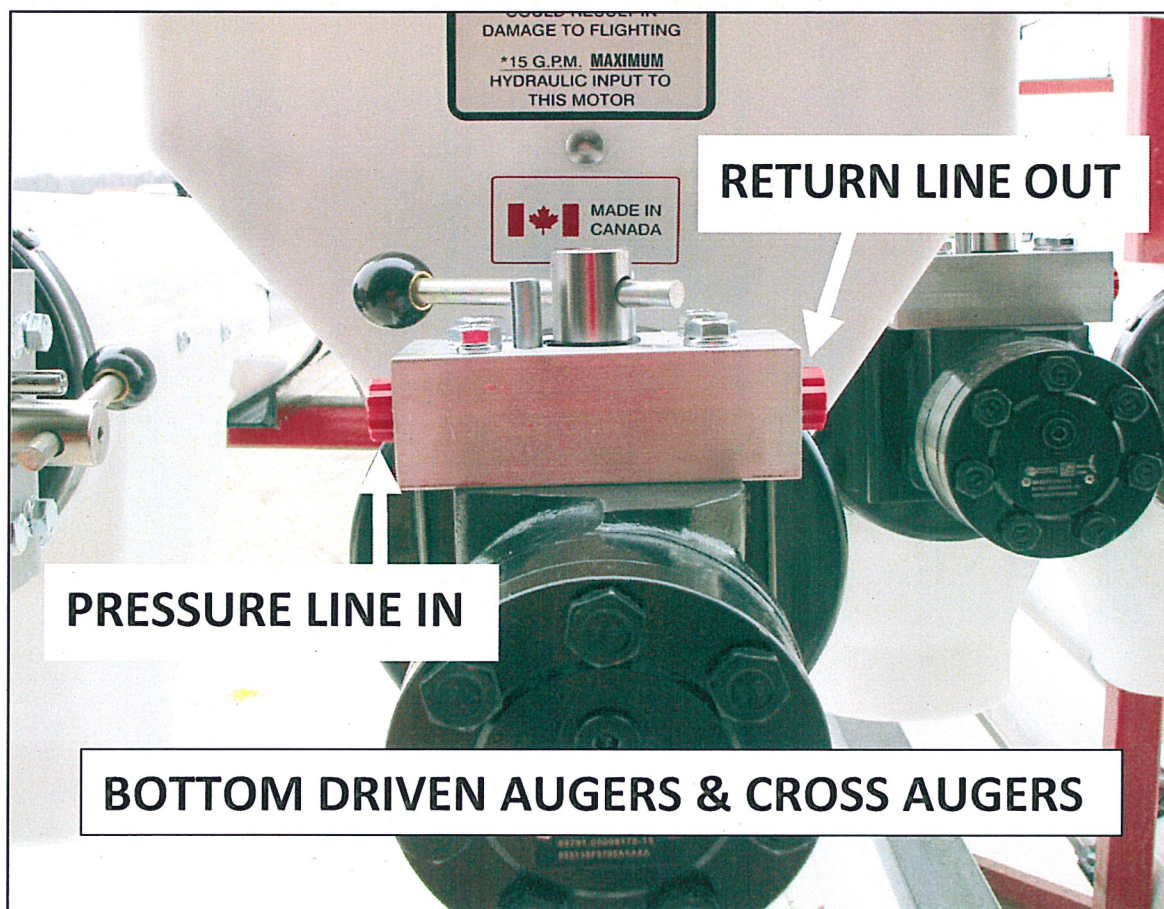
4: Hopper may be rotated for clean out and to narrow the transport width.

TOP DRIVEN AUGERS

RETURN LINE OUT

**VALVE IN CLOSED
POSITION**

PRESSURE LINE IN

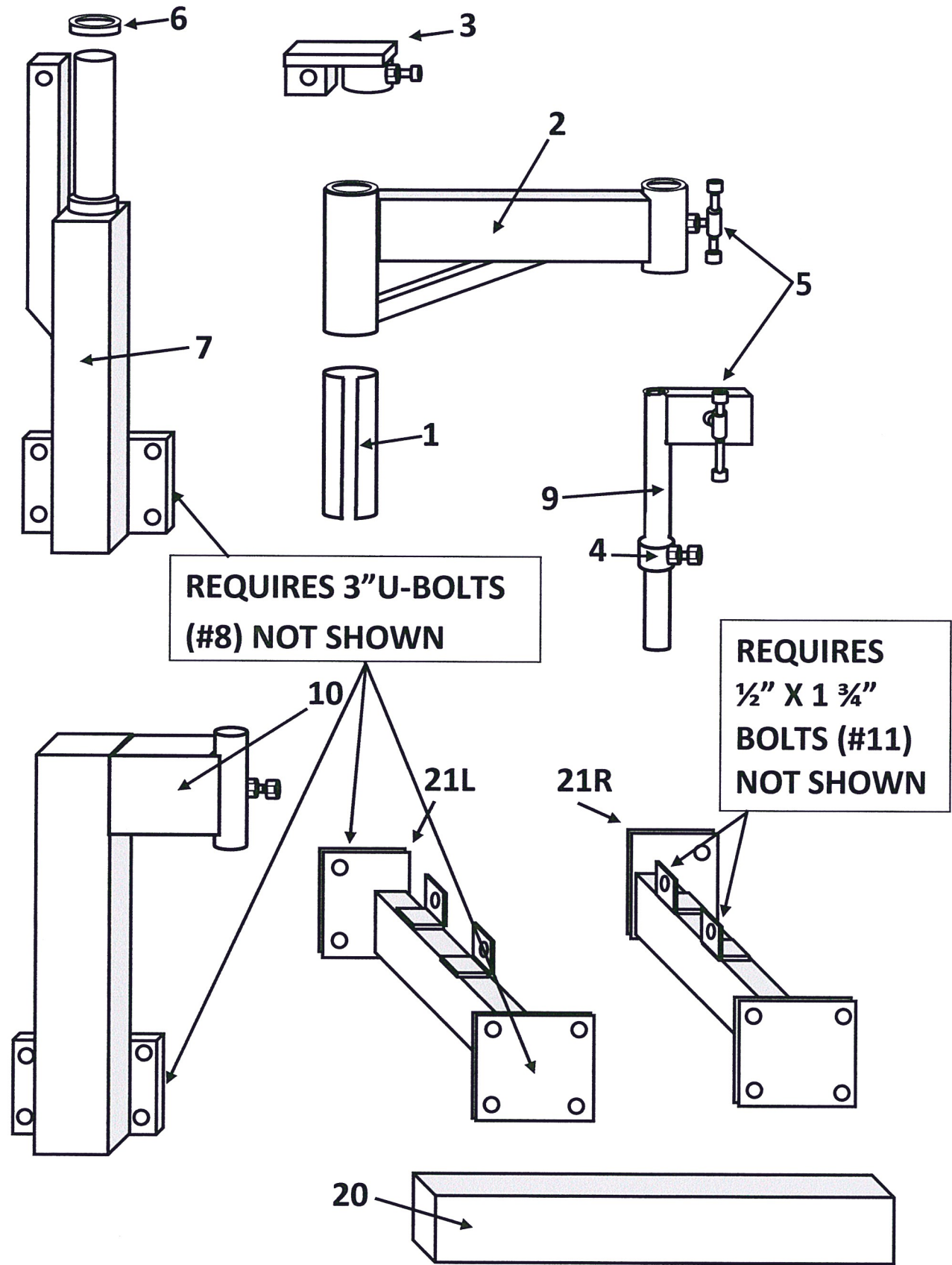


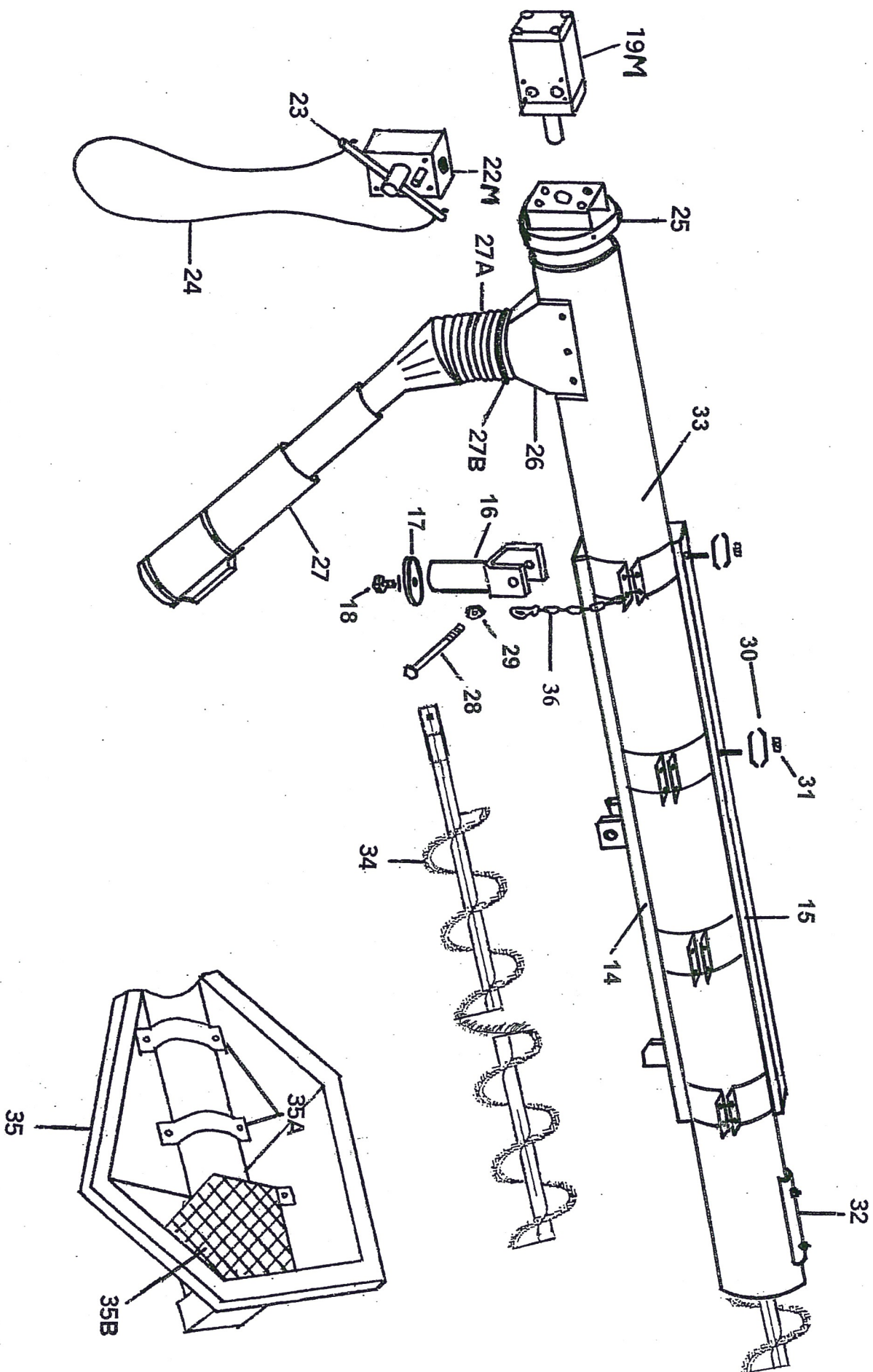
RETURN LINE OUT

PRESSURE LINE IN

BOTTOM DRIVEN AUGERS & CROSS AUGERS

18' SINGLE AUGER SEED-FILL FOR KINZE 3600 ASD





18' SINGLE AUGER SEED FILL FOR KINZE 3600 ASD PLANTER

18' SINGLE AUGER SEED FILL FOR KINZE 3600 ASD

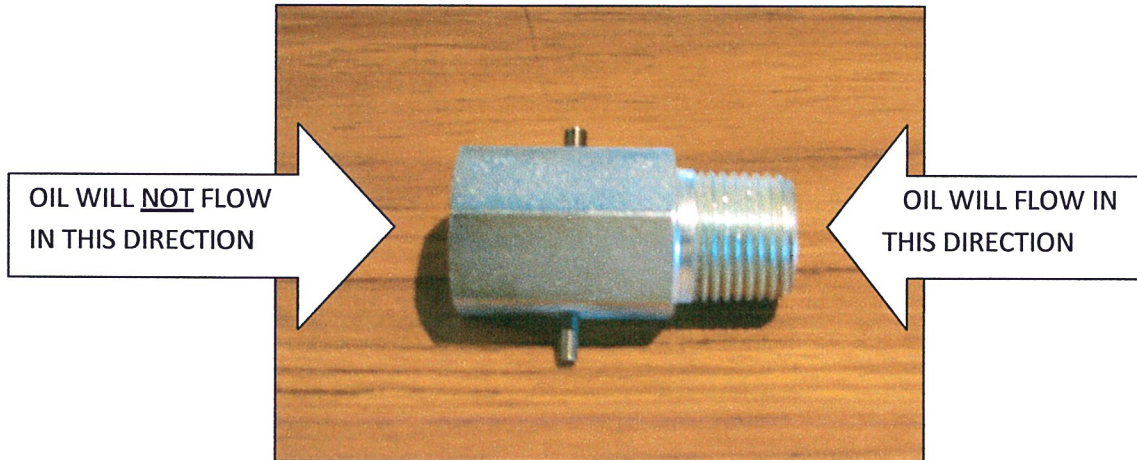
PARTS LIST

REF.#	PRO.#	PART DESCRIPTION
1	389*	9 ½" UHMW plastic sleeve
2	1188	Swing Arm (Specify make of Planter when ordering)
3		Post Cap
4		Lock Collar (#4 & #9 are called a Wedge Lock Tab Receiver assembly)
5	1175	Lock Bolt Assembly
6	783	UHMW Plastic Washer
7		Main Post (Specify make of Planter when ordering)
8		3" U-Bolt
9	956	Wedge Lock Tab Receiver
10		Transport Bracket (Specify make of Planter when ordering)
11		½" x 1 ¾" Gr. 5 Bolt
12		½" Lock Washer
13		½" Nut
14		Lower Support Channel
15		Upper Support Channel
16		Swivel Post for 18' S/A S/F
17		3" Flat Washer (Cap)
18		½" x 1" Gr. 5 Bolt
19M	395	6 cu. in. Hydraulic Motor (Manifold)
20		3" x 3" Steel Tube
21		Sub-Frames (2-Left & 2-Right)
22M	117	'H' Valve (Manifold mount)
23	580	H-8 Valve Handle
24	102	12' Nylon Control Rope
25	198	6" Motor Plate
26	613	6" Auger Discharge Spout c/w Screws
27	612	3 Stage 5'-10' Telescoping Downspout
27A	725	6" x 18" flex Hose c/w Rivets & Washers
27B	149	6" Hose Clamp
28		½" x 4 ½" Gr. 5 Bolt
29		½" Stover Lock Nut
30	532	Hydraulic Line Holder
31		¾" Stover Lock Nut
32	1203	Hopper Stop
33	193	6" Plastic Tube (Specify make of Planter & Length of Tube)
34B	657	6" Bristle Flighting (Specify Length) *shown in parts breakdown*
34P	153	6" Plastic Flighting (Specify Length)
34S	834	6" Cupped Steel Flighting (Specify Length)
34CP		5" Cupped Plastic Flighting (Specify Length)
35	546	6" Vertical Auger Hopper
35A	549	Vertical Auger Hopper Clamp Band
35B	548	Vertical Auger Hopper Safety Grille
36	1177	Chain c/w Snap Clip

OPTIONAL VALVES FOR HYDRAULIC AUGERS

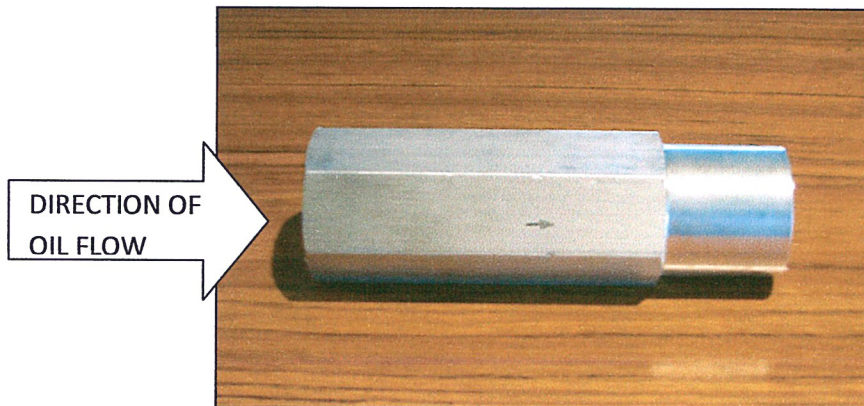
Note: These optional valves do not replace the shut-off valve on the auger.

A directional valve fitting can be installed to restrict the auger from running in the reverse direction. This valve should be installed on the return line, between the valve on motor and the tractor. Thread is $\frac{1}{2}$ " NPT. **RECOMMENDED FOR AUGERS THAT SHOULD NOT BE RUN IN REVERSE, AS IT MAY CAUSE DAMAGE TO THE FLIGHTING.**



An in-line, pressure compensated, nonadjustable flow regulator valve is available for CLOSED CENTER HYDRAULIC SYSTEMS. In the controlled direction, this regulator will maintain a constant flow rate of 10 GPM. This valve should be installed on the pressure line, between the tractor and the valve on motor. Thread is $\frac{3}{4}$ " NPTF (must be reduced to $\frac{1}{2}$ ")

RECOMMENDED FOR AUGERS OPERATED BY LARGER TRACTORS WITH LARGER HYDRAULIC OUTPUT.



Augers operate best at 10-12 GPM & 1200-1500 PSI.

Market Farm Equipment Ltd. RR# 1 Dashwood, Ontario, Canada N0M 1N0
E-Mail mfeltd@execulink.com Web-Site www.marketfarmequipment.com

IMPORTANT OPERATING INSTRUCTIONS

- 1: NEVER LEAVE THE DOWNSPOUT (TELESCOPING OR FLEX) UNATTENDED WHILE THE AUGER IS RUNNING. IF IT IS NECESSARY TO LEAVE THE DOWNSPOUT, SHUT AUGER OFF.**
- 2: NEVER HOLD THE DOWNSPOUT (TELESCOPING OR FLEX) DOWN TOO LOW. THE MATERIAL CAN BUILD UP AND PLUG THE DISCHARGE. PLUGGING AND DAMAGE TO FLIGHTING CAN OCCUR QUICKLY. TO AVOID COSTLY DOWNTIME AND REPAIR COSTS ALWAYS BE AWARE OF HOW FULL YOUR SEED/FERTILIZER HOPPERS ARE GETTING WHILE FILLING.**
- 3: NEVER EXCEED THE MAXIMUM 15 G.P.M. HYDRAULIC INPUT. MOST AUGERS REQUIRE 9-12 GPM AT 1200-1500 PSI TO RUN PROPERLY.**
- 4: NEVER RUN AUGER EMPTY FOR LONG PERIODS OF TIME AS THIS WILL CAUSE WEAR TO THE TUBE & FLIGHTING.**
- 5: OPTIONAL FLOW REGULATOR VALVES (10 GPM MAX.) AND DIRECTIONAL VALVES ARE AVAILABLE.**
- 6: OPTIONAL ELECTRIC SOLENOID VALVES ARE AVAILABLE WITH CABLE OR REMOTE SHUT-OFF/ON FEATURES.**

PLEASE READ ALL SAFETY/IMPORTANT DECALS ON THE AUGER. UNDERSTANDING THE AUGERS REQUIREMENTS AND PROPER USE WILL ENSURE A LONG AND TROUBLE FREE LIFE FOR THE AUGER.

IMPORTANT

YOUR AUGERS DOWNSPOUT SHOULD NEVER BE SET DOWN OR LEFT UNATTENDED WHILE THE AUGER IS RUNNING.

MATERIAL CAN BUILD UP QUICKLY CAUSING THE DOWNSPOUT AND AUGER TO PLUG. THIS CAN DAMAGE THE AUGERS FLIGHTING AND MOTOR.

ALWAYS TURN AUGER OFF BEFORE LEAVING THE DOWNSPOUT TO ATTEND TO OTHER MATTERS.

