



**OPERATOR'S MANUAL  
SET-UP INSTRUCTIONS  
&  
PARTS LIST**

**18' SINGLE AUGER SEED-FILL  
JD 1790**



**MARKET FARM EQUIPMENT LIMITED, R.R.#1 DASHWOOD, ONTARIO, CANADA**

**TEL# 519-238-2301 FAX# 519-238-6044 E-MAIL: [mfeltd@execulink.com](mailto:mfeltd@execulink.com)**

**[www.marketfarmequipment.com](http://www.marketfarmequipment.com)**

**"SERVING THE FARM INDUSTRY SINCE 1962"**

# **WARRANTY PROCEDURE**

MARKET FARM EQUIPMENT WARRANTS THEIR MANUFACTURED PRODUCTS TO BE FROM DEFECTS IN MATERIAL AND WORKMANSHIP FOR A PERIOD OF ONE (1) YEAR AFTER THE DATE OF PURCHASE TO THE FIRST END USER AND IS SUBJECT TO THE FOLLOWING CONDITIONS.

1. Damage caused by improper use, negligence, or operation beyond rated capacity, improper set-up, adjustment, or any unauthorized modifications made by the dealer or customer, shall void this warranty.
2. Notification of damage or warranty claims must be submitted to Market Farm Equipment (M.F.E.) within seven (7) days of the date of failure.
3. All defective parts must be made available by the dealer, for inspection by M.F.E. if required, and returned at the dealer's expense.
4. All warranty claims must be approved by M.F.E.
5. The labour and freight required to replace defective parts is not reimbursable.
6. Exchange, credit or warranty status will be based on the results of the inspection of damaged items by the manufacturer.
7. Credit will be issued if and when the warranty claim is approved and **MUST NOT** be deducted from the account by the dealer.
8. Products and/or parts not manufactured by M.F.E. are subject to their own manufacturer's warranty conditions.

**WARRANTY CONSIDERATION IS ONLY VALID WHEN THE WARRANTY REGISTRATION FORM HAS BEEN RECEIVED BY MARKET FARM EQUIPMENT.**



# **WARRANTY REGISTRATION**

**MARKET FARM EQUIPMENT LIMITED**  
**R.R. 1 DASHWOOD, ONTARIO, CANADA, N0M 1N0**  
**Fax: 519-238-6044 E-mail: mfeltd@execulink.com**

---

Purchaser's warranty protection on this equipment is valid only when this registration form is completed by the purchaser and returned to Market Farm Equipment Limited.

Date of purchase: \_\_\_\_\_

Type of equipment: \_\_\_\_\_

Model number: \_\_\_\_\_ Serial number: \_\_\_\_\_

## **PURCHASER'S SIGNATURE INDICATES:**

- Acceptance of equipment, fully assembled (    ) unassembled (    )
- Receipt of operator's manual
- Clear understanding of warranty
- Receipt of instructions on special safety equipment available
- Receipt of instructions on safe and proper operating procedures

## **PURCHASER:**

Name: \_\_\_\_\_

Signature: \_\_\_\_\_

Mailing Address: \_\_\_\_\_

Prov./State: \_\_\_\_\_ Postal/Zip Code: \_\_\_\_\_

Telephone number: \_\_\_\_\_

Purchased from: \_\_\_\_\_

## **THIS WARRANTY MUST BE VALIDATED BY THE MANUFACTURER**

It is valid only when a copy of the registration has been received by the manufacturer at address shown.

# **MARKET FARM EQUIPMENT LIMITED**

## **EXPRESS WARRANTY**

Market Farm Equipment Limited warrants against defects in construction and materials for a period of ONE year. We reserve the right to inspect and decide whether material or construction was faulty, or whether abuse or accident voids our guarantee.

This warranty does not cover a component which fails, malfunctions or is damaged as a result of (I) improper modification or repair, (II) accident, abuse or improper use, including loading beyond the specified maximum weights and requirements (III) improper or insufficient maintenance, or (IV) normal wear and tear.

**THIS WARRANTY IS EXPRESSLY IN LIEU OF ALL OTHER WARRANTIES OR CONDITIONS, EXPRESS, IMPLIED OR STATUTORY, INCLUDING ANY IMPLIED WARRANTY OF MERCHANTABILITY OR FITNESS FOR A PARTICULAR PURPOSE.**

In no way shall Market Farm Equipment Limited be liable for special, direct, incidental or consequential damages of any kind, including but not limited to labour charges.

The exclusive remedy under this warranty shall be repair or replacement of the defective component at Market Farm Equipment Limited's option. This is the entire agreement between Market Farm Equipment Limited and the owner about warranty. NO M.F.E. Ltd. employee or dealer is authorized to make additional warranty on behalf of Market Farm Equipment Limited.

(Fill in the following for future reference)

Serial number: \_\_\_\_\_

Date of purchase: \_\_\_\_\_

Purchased from: \_\_\_\_\_



# **SAFETY INFORMATION**

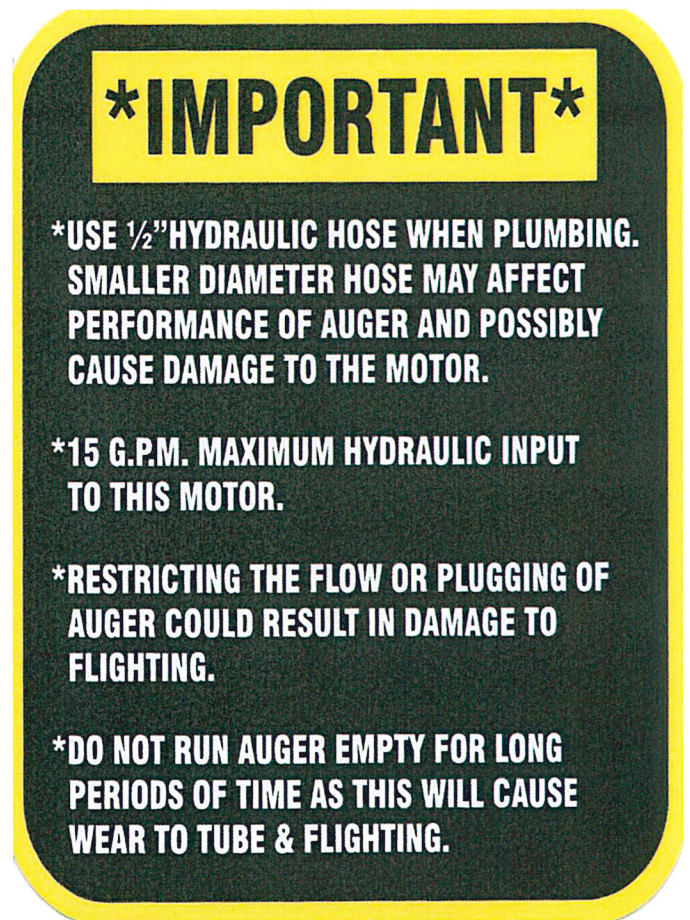
- Before using auger READ and UNDERSTAND SAFETY INSTRUCTIONS.
- After hydraulic lines are connected, run auger empty to ensure the flighting is rotating in the proper direction. (if ran backwards, damage may occur)
- Auger should be empty when moving or transporting.
- Hydraulic oil leaking under pressure can cause injury. Make sure all hydraulic connections are tight. Before disconnecting hydraulic lines, relieve pressure.
- Do not adjust, clean or service auger while it is running.
- Keep all safety shields in place. Replace any safety decals that become lost or damaged.
- Do not operate the auger in a manner that it was not intended for.
- When transporting, always keep auger in its lowest position.

## **HYDRAULIC SYSTEM OPERATING RESTRICTIONS**

**MAXIMUM FLOW – 20 G.P.M.    MAXIMUM PRESSURE – 2500 P.S.I.**

**MAXIMUM FLOW AND MAXIMUM PRESSURE conditions MUST NOT occur simultaneously. Damage will occur and warranty will be void. Use only ½" hydraulic hose when plumbing. Smaller hose will create heat that will burn out the hydraulic motor and warranty will be void.**

**Do not tee into hydraulic lift cylinders on planters or drills.**





## **SINGLE AUGER SEED FILL MOUNTING INSTRUCTIONS FOR John Deere 1790**

Remove left side of hand rail. Lower front guard rail as low as possible. This can be re-adjusted after auger is in transport position.

Remove SMV sign complete with mounting bracket. This can be attached to the main post using the 2 welded on bolts.

1. Mount main post as shown in diagram, 9" up on tool bar support.
2. Slide swing arm onto post making sure that the plastic sleeves stay inside to allow easy swinging.
3. Slide UHMW plastic washer onto post, then attach post collar to top of post.
4. Bolt transport bracket as shown in diagram, 14" down on 4" x 4" main post.
5. Slide wedge lock receiver into end of transport bracket (DO NOT tighten 3/4" set bolt until auger is in transport position).
6. Slide swivel post into swing arm. Bolt lock collar using 3/4" bolt and lock washer to secure swivel post.
7. Swing auger into transport position and tighten 3/4" set bolt on wedge lock receiver.
8. Attach 4' x 6" flexible downspout using hose clamp.
9. Attach vertical hopper to bottom of auger.
10. When plumbing auger make sure to use 1/2" hydraulic hose.

**NOTE:** We suggest welding a stop on the planter leg at the bottom of main post to eliminate post movement due to wear.

**\* IMPORTANT \***  
**TIGHTEN LOCK  
SECURELY  
BEFORE TRANSPORTING**

**DAMAGE CAUSED TO AUGER  
OR HARDWARE DUE TO  
UNSECURED LOCKS, WILL NOT  
BE COVERED BY WARRANTY.**

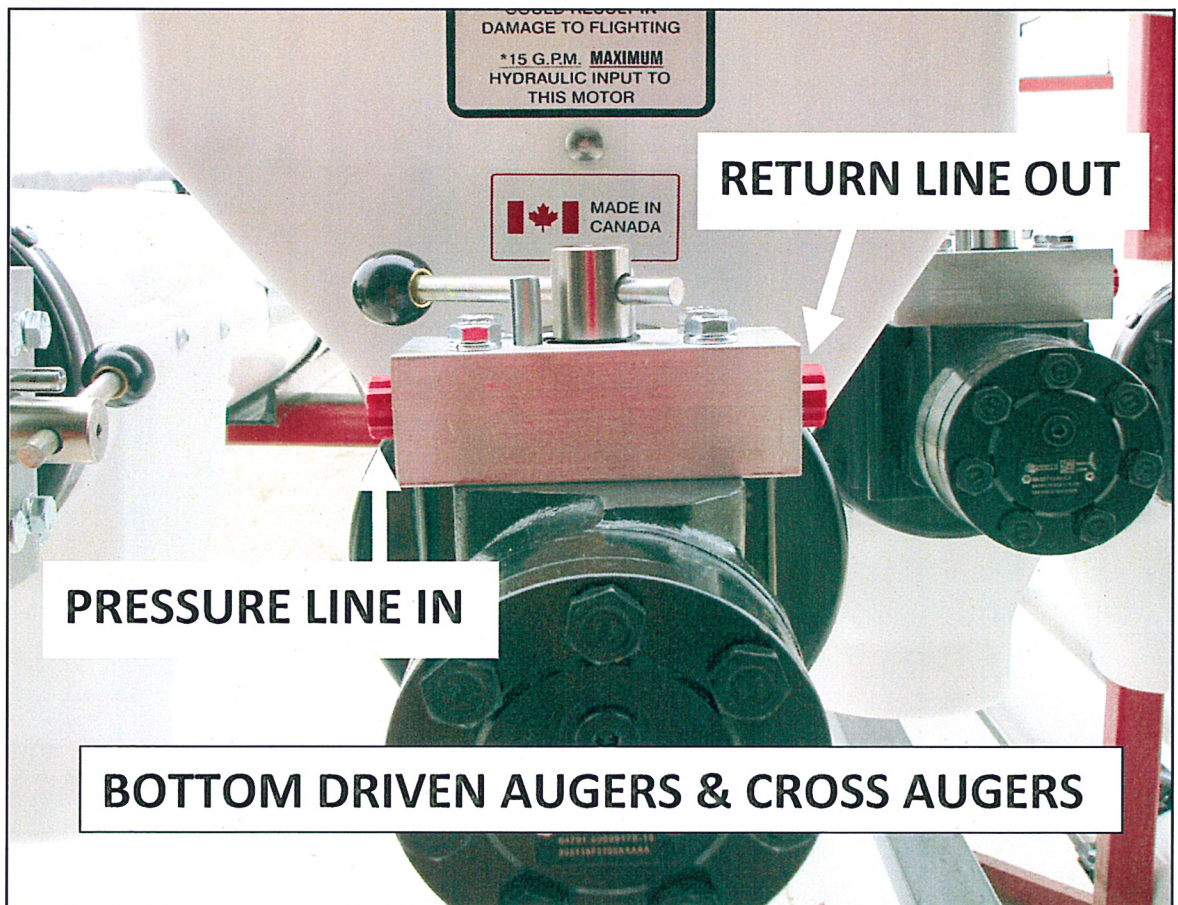


**TOP DRIVEN AUGERS**

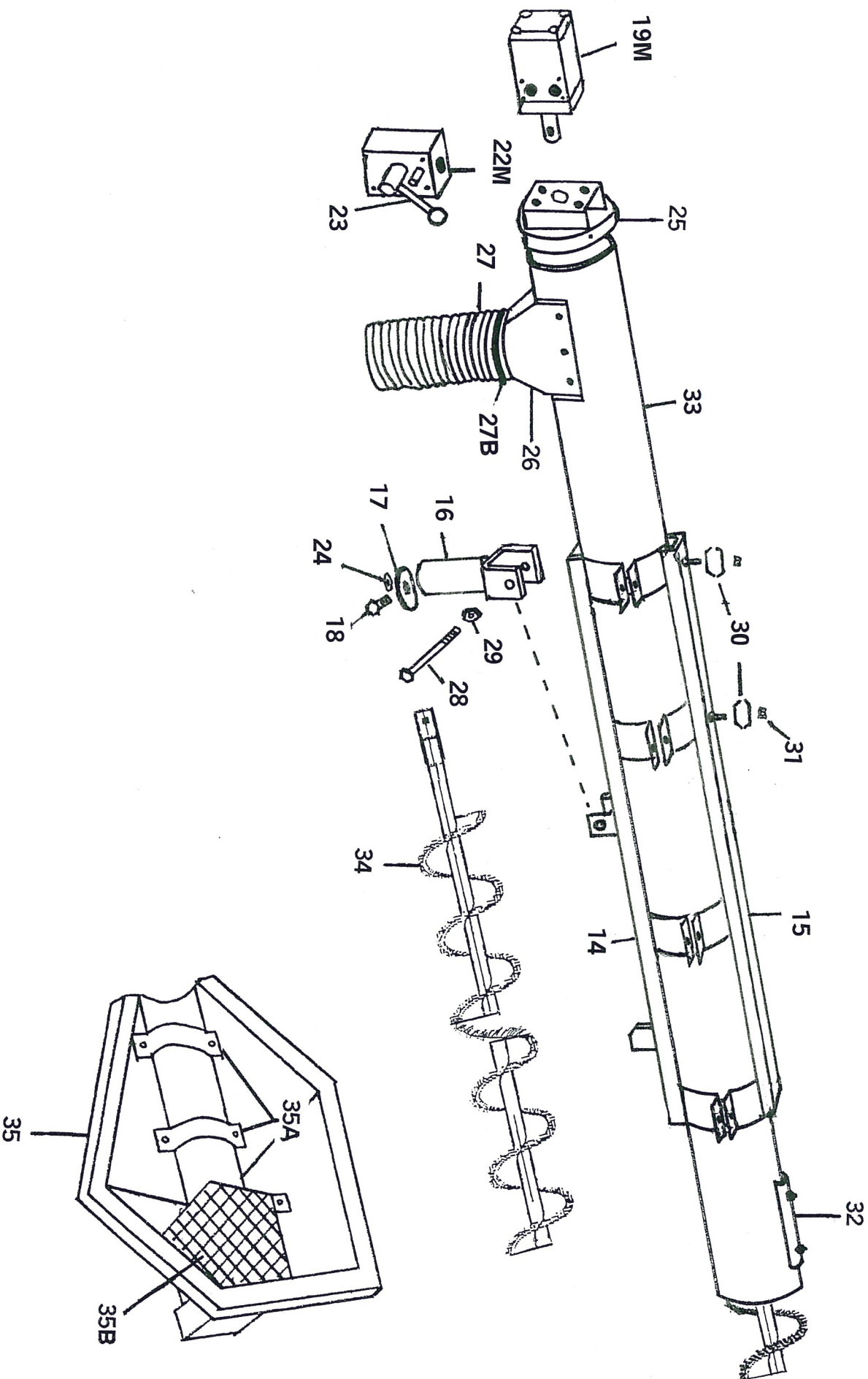
**RETURN LINE OUT**

**VALVE IN CLOSED  
POSTION**

**PRESSURE LINE IN**





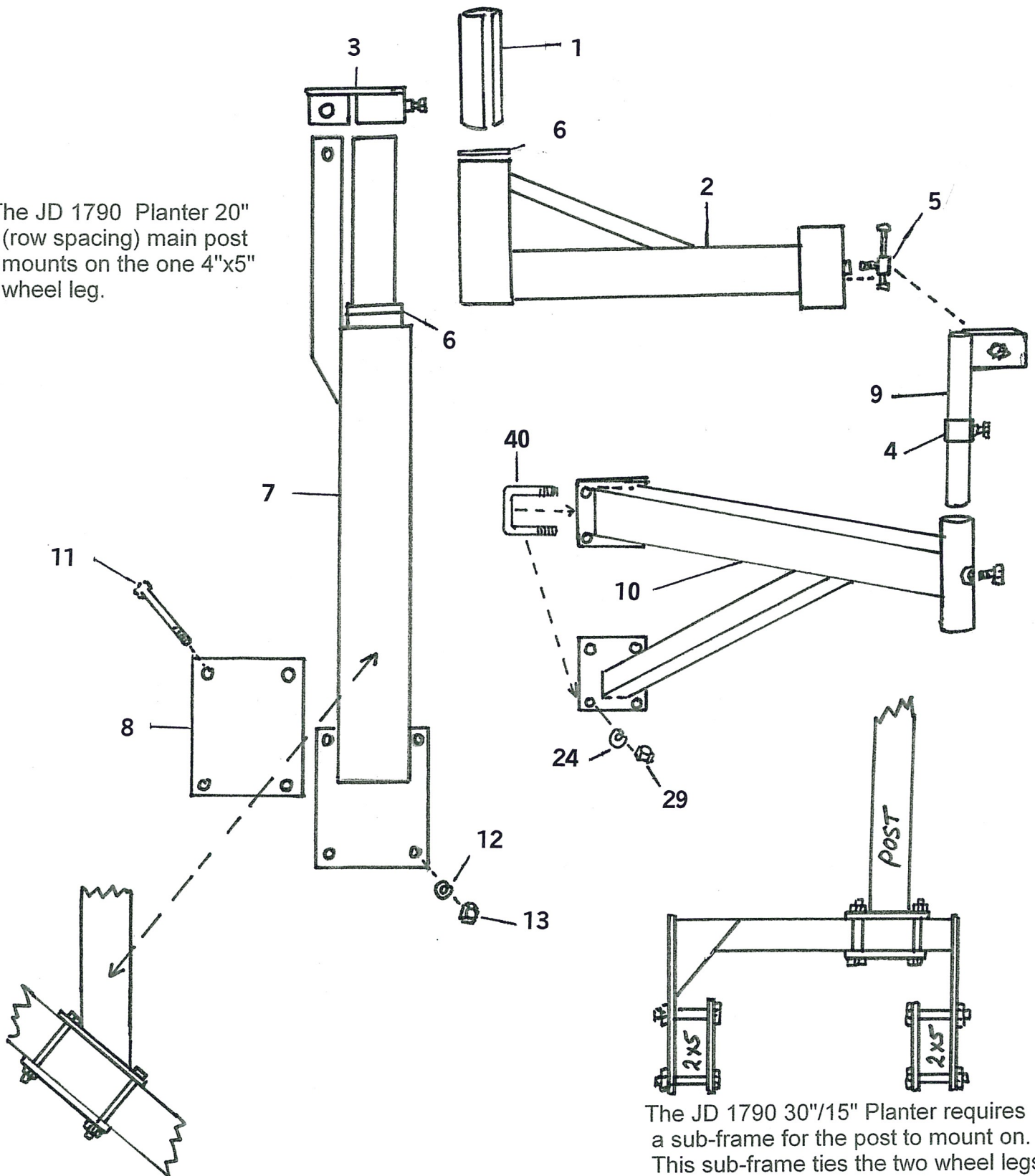


# SINGLE AUGER SEED FILL JOHN DEERE 1790



# JOHN DEERE 1790

The JD 1790 Planter 20" (row spacing) main post mounts on the one 4"x5" wheel leg.



The JD 1790 30"/15" Planter requires a sub-frame for the post to mount on. This sub-frame ties the two wheel legs together as shown in the diagram.

\* specify size & make

## SINGLE AUGER SEED FILL PARTS LIST

### JOHN DEERE 1790

REF #	PRO CD	DESCRIPTION
1	389*	9 1/2" UHMW plastic sleeve
2	1188	Swing arm 18'
3		Post collar
4		Collar
5	1175	Lock bolt assembly
6	783	UHMW plastic washer
*7	1189	Main Post 20" rows
*7A	1189	Main Post 15"/30" rows (not shown)
*7B	1189	Sub frame 15"/30" rows (not shown)
8		Main Post backer plate
9	956	Wedgelock tab receiver
10	1190	Transport bracket
11		5/8" x 7" bolt
12		5/8" lock washer
13		5/8" nut
14		Lower support channel with bottom clamp bands
15		Upper support channel with upper clamp bands
16	1191	Swivel post
17		3" flat washer
18		1/2" x 1" bolt & lock washer
19M	395	6.0 cu. in. hydraulic motor (manifold mount)
19	457	6.0 cu. in. hydraulic motor (old style) (not shown)
22M	117	'H' valve (manifold mount)
22	130	'H' valve (old style) (not shown)
23	580	H-4 valve handle with black knob
24		1/2" lock washer
25	198	6" motor mounting plate
26	613	6" auger discharge spout w/ screws
27	148	6" downspout (4' long)
27B	149	6" hose clamp
28, 29		1/2" x 4 1/2" bolt & lock nut
30	532	Hydraulic line holder
31		3/8" lock nut
32	1203	Hopper stop
33*	193	6" plastic auger tube
34B*	657	6" bristle auger flighting
34P*	153	6" plastic auger flighting (not shown)
34CS*	834	6" cupped steel flighting (not shown)
35	546	6" V/A hopper
35A	549	1 3/4" 1/2 clamp band 6"
35B	548	Safety grille for V/A
40		4" U-bolt















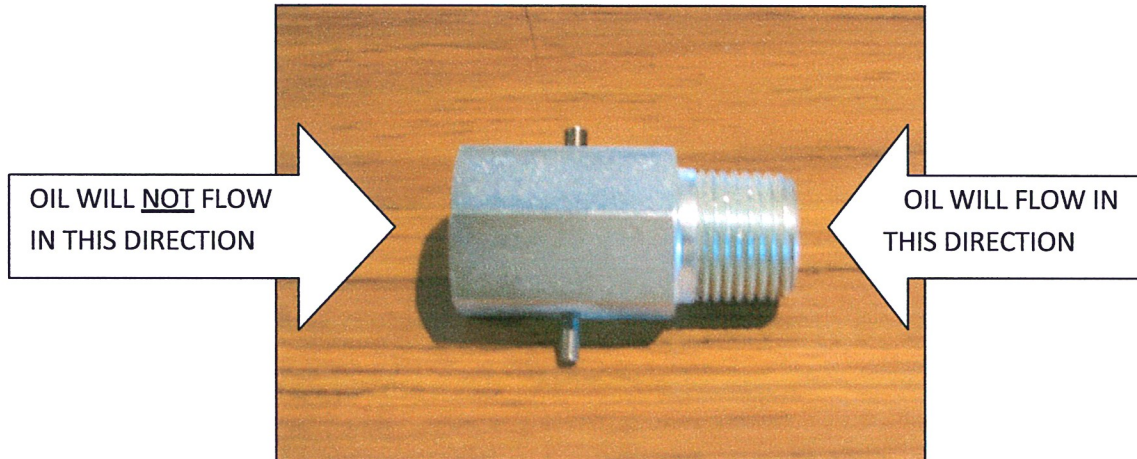




## OPTIONAL VALVES FOR HYDRAULIC AUGERS

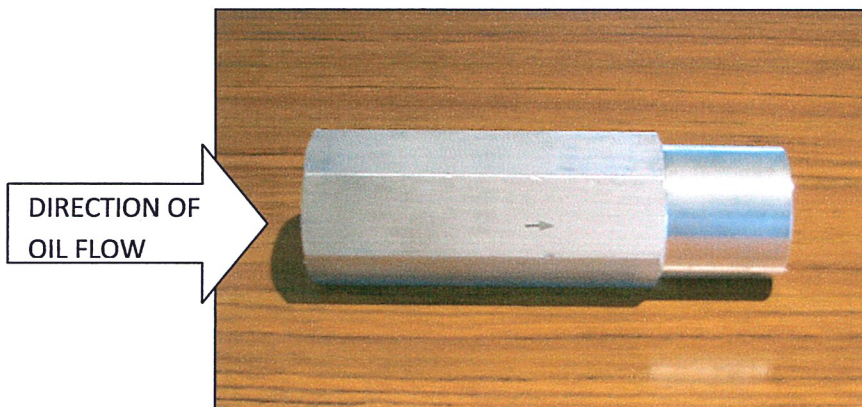
**Note:** These optional valves do not replace the shut-off valve on the auger.

A directional valve fitting can be installed to restrict the auger from running in the reverse direction. This valve should be installed on the return line, between the valve on motor and the tractor. Thread is  $\frac{1}{2}$ " NPT. **RECOMMENDED FOR AUGERS THAT SHOULD NOT BE RUN IN REVERSE, AS IT MAY CAUSE DAMAGE TO THE FLIGHTING.**



An in-line, pressure compensated, nonadjustable flow regulator valve is available for CLOSED CENTER HYDRAULIC SYSTEMS. In the controlled direction, this regulator will maintain a constant flow rate of 10 GPM. This valve should be installed on the pressure line, between the tractor and the valve on motor. Thread is  $\frac{3}{4}$ " NPTF (must be reduced to  $\frac{1}{2}$ " )

**RECOMMENDED FOR AUGERS OPERATED BY LARGER TRACTORS WITH LARGER HYDRAULIC OUTPUT.**



**Augers operate best at 10-12 GPM & 1200-1500 PSI.**

**Market Farm Equipment Ltd. RR# 1 Dashwood, Ontario, Canada N0M 1N0**  
**E-Mail [mfeltd@execulink.com](mailto:mfeltd@execulink.com) Web-Site [www.marketfarmequipment.com](http://www.marketfarmequipment.com)**

# IMPORTANT

YOUR AUGERS DOWNSPOUT SHOULD NEVER BE SET DOWN OR LEFT UNATTENDED WHILE THE AUGER IS RUNNING.

MATERIAL CAN BUILD UP QUICKLY CAUSING THE DOWNSPOUT AND AUGER TO PLUG. THIS CAN DAMAGE THE AUGERS FLIGHTING AND MOTOR.

ALWAYS TURN AUGER OFF BEFORE LEAVING THE DOWNSPOUT TO ATTEND TO OTHER MATTERS.





## **\*IMPORTANT OPERATING INSTRUCTIONS\***

- 1: NEVER LEAVE THE DOWNSPOUT (TELESCOPING OR FLEX) UNATTENDED WHILE THE AUGER IS RUNNING. IF IT IS NECESSARY TO LEAVE THE DOWNSPOUT, SHUT AUGER OFF.**
- 2: NEVER HOLD THE DOWNSPOUT (TELESCOPING OR FLEX) DOWN TOO LOW. THE MATERIAL CAN BUILD UP AND PLUG THE DISCHARGE. PLUGGING AND DAMAGE TO FLIGHTING CAN OCCUR QUICKLY. TO AVOID COSTLY DOWNTIME AND REPAIR COSTS ALWAYS BE AWARE OF HOW FULL YOUR SEED/FERTILIZER HOPPERS ARE GETTING WHILE FILLING.**
- 3: NEVER EXCEED THE MAXIMUM 15 G.P.M. HYDRAULIC INPUT. MOST AUGERS REQUIRE 9-12 GPM AT 1200-1500 PSI TO RUN PROPERLY.**
- 4: NEVER RUN AUGER EMPTY FOR LONG PERIODS OF TIME AS THIS WILL CAUSE WEAR TO THE TUBE & FLIGHTING.**
- 5: OPTIONAL FLOW REGULATOR VALVES (10 GPM MAX.) AND DIRECTIONAL VALVES ARE AVAILABLE.**
- 6: OPTIONAL ELECTRIC SOLENOID VALVES ARE AVAILABLE WITH CABLE OR REMOTE SHUT-OFF/ON FEATURES.**

**PLEASE READ ALL SAFETY/IMPORTANT DECALS ON THE AUGER. UNDERSTANDING THE AUGERS REQUIREMENTS AND PROPER USE WILL ENSURE A LONG AND TROUBLE FREE LIFE FOR THE AUGER.**