



**OPERATOR'S MANUAL  
SET-UP INSTRUCTIONS  
&  
PARTS LIST**

## **15' SINGLE AUGER SEED-FILL**



**MARKET FARM EQUIPMENT LIMITED, R.R.#1 DASHWOOD, ONTARIO, CANADA**

**TEL# 519-238-2301 FAX# 519-238-6044 E-MAIL: [mfeltd@execulink.com](mailto:mfeltd@execulink.com)**

**[www.marketfarmequipment.com](http://www.marketfarmequipment.com)**

**"SERVING THE FARM INDUSTRY SINCE 1962"**



# **WARRANTY PROCEDURE**

MARKET FARM EQUIPMENT WARRANTS THEIR MANUFACTURED PRODUCTS TO BE FREE FROM DEFECTS IN MATERIAL AND WORKMANSHIP FOR A PERIOD OF ONE (1) YEAR AFTER THE DATE OF PURCHASE TO THE FIRST END USER AND IS SUBJECT TO THE FOLLOWING CONDITIONS.

1. Damage caused by improper use, negligence, or operation beyond rated capacity, improper set-up, adjustment, or any unauthorized modifications made by the dealer or customer, shall void this warranty.
2. Notification of damage or warranty claims must be submitted to Market Farm Equipment (M.F.E.) within seven (7) days of the date of failure.
3. All defective parts must be made available by the dealer, for inspection by M.F.E. if required, and returned at the dealer's expense.
4. All warranty claims must be approved by M.F.E.
5. The labour and freight required to replace defective parts is not reimbursable.
6. Exchange, credit or warranty status will be based on the results of the inspection of damaged items by the manufacturer.
7. Credit will be issued if and when the warranty claim is approved and **MUST NOT** be deducted from the account by the dealer.
8. Products and/or parts not manufactured by M.F.E. are subject to their own manufacturer's warranty conditions.

**WARRANTY CONSIDERATION IS ONLY VALID WHEN THE WARRANTY REGISTRATION FORM HAS BEEN RECEIVED BY MARKET FARM EQUIPMENT.**

# WARRANTY REGISTRATION

MARKET FARM EQUIPMENT LIMITED  
71796A BLUEWATER HIGHWAY, ONTARIO, CANADA, N0M 1N0  
Fax: 519-238-6044 E-mail: mfeltd@execulink.com

---

Purchaser's warranty protection on this equipment is valid only when this registration form is completed by the purchaser and returned to Market Farm Equipment Limited.

Date of purchase: \_\_\_\_\_

Type of equipment: \_\_\_\_\_

Model number: \_\_\_\_\_ Serial number: \_\_\_\_\_

## PURCHASER'S SIGNATURE INDICATES:

- Acceptance of equipment, fully assembled (    ) unassembled (    )
- Receipt of operator's manual
- Clear understanding of warranty
- Receipt of instructions on special safety equipment available
- Receipt of instructions on safe and proper operating procedures

## PURCHASER:

Name: \_\_\_\_\_

Signature: \_\_\_\_\_

Mailing Address: \_\_\_\_\_

Prov./State: \_\_\_\_\_ Postal/Zip Code: \_\_\_\_\_

Telephone number: \_\_\_\_\_

Purchased from: \_\_\_\_\_

## THIS WARRANTY MUST BE VALIDATED BY THE MANUFACTURER

It is valid only when a copy of the registration has been received by the manufacturer at address shown.



# **MARKET FARM EQUIPMENT LIMITED**

## **EXPRESS WARRANTY**

Market Farm Equipment Limited warrants against defects in construction and materials for a period of ONE year. We reserve the right to inspect and decide whether material or construction was faulty, or whether abuse or accident voids our guarantee.

This warranty does not cover a component which fails, malfunctions or is damaged as a result of (I) improper modification or repair, (II) accident, abuse or improper use, including loading beyond the specified maximum weights and requirements (III) improper or insufficient maintenance, or (IV) normal wear and tear.

**THIS WARRANTY IS EXPRESSLY IN LIEU OF ALL OTHER WARRANTIES OR CONDITIONS, EXPRESS, IMPLIED OR STATUTORY, INCLUDING ANY IMPLIED WARRANTY OF MERCHANTABILITY OR FITNESS FOR A PARTICULAR PURPOSE.**

In no way shall Market Farm Equipment Limited be liable for special, direct, incidental or consequential damages of any kind, including but not limited to labour charges.

The exclusive remedy under this warranty shall be repair or replacement of the defective component at Market Farm Equipment Limited's option. This is the entire agreement between Market Farm Equipment Limited and the owner about warranty. NO M.F.E. Ltd. employee or dealer is authorized to make additional warranty on behalf of Market Farm Equipment Limited.

(Fill in the following for future reference)

Serial number: \_\_\_\_\_

Date of purchase: \_\_\_\_\_

Purchased from: \_\_\_\_\_



# SAFETY INFORMATION

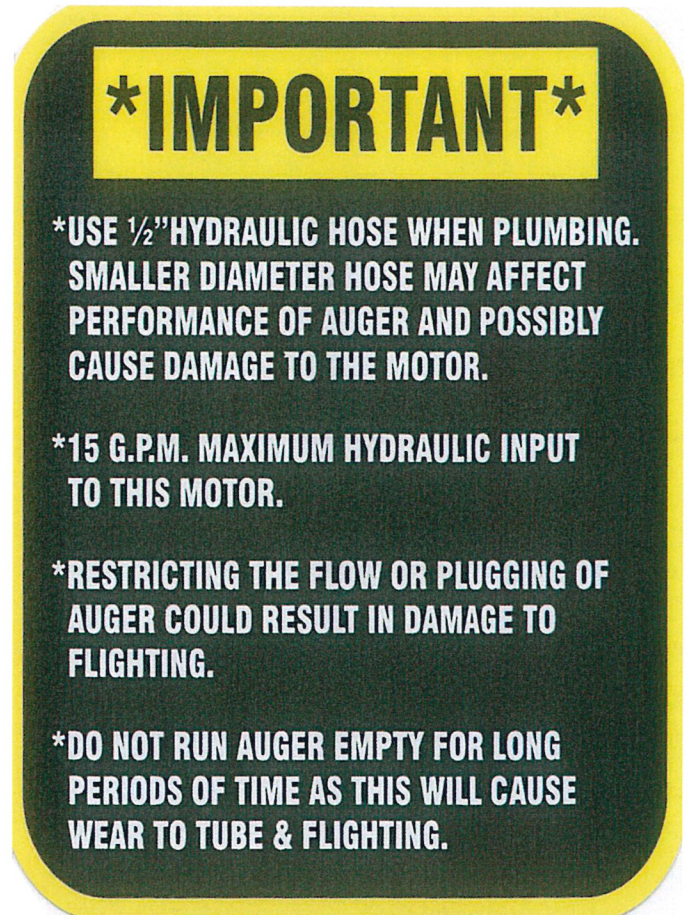
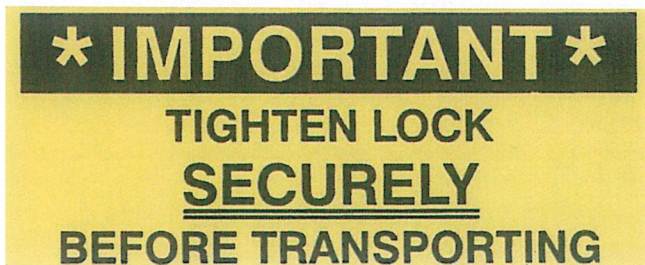
- Before using auger READ and UNDERSTAND SAFETY INSTRUCTIONS.
- After hydraulic lines are connected, run auger empty to ensure the flighting is rotating in the proper direction. (if ran backwards, damage may occur)
- Auger should be empty when moving or transporting.
- Hydraulic oil leaking under pressure can cause injury. Make sure all hydraulic connections are tight. Before disconnecting hydraulic lines, relieve pressure.
- Do not adjust, clean or service auger while it is running.
- Keep all safety shields in place. Replace any safety decals that become lost or damaged.
- Do not operate the auger in a manner that it was not intended for.
- When transporting, always keep auger in its lowest position.

## HYDRAULIC SYSTEM OPERATING RESTRICTIONS

MAXIMUM FLOW – 20 G.P.M. MAXIMUM PRESSURE – 2500 P.S.I.

MAXIMUM FLOW AND MAXIMUM PRESSURE conditions MUST NOT occur simultaneously. Damage will occur and warranty will be void. Use only ½" hydraulic hose when plumbing. Smaller hose will create heat that will burn out the hydraulic motor and warranty will be void.

Do not tee into hydraulic lift cylinders on planters or drills.





## SINGLE AUGER SEED FILL MOUNTING INSTRUCTIONS FOR John Deere 750 / 1560 / 1590 15' & 20'

1. Find center of weigh bar.
2. Install support post (7) on weigh bar as shown in diagram.
3. Slide the swing arm (2) onto the support post (7), taking caution not to damage plastic sleeve (1) inside 2 ½" x 10" bushing.
4. Mount auger by inserting the height adjuster (3) into swing arm. *Fig. A*
5. Install transport bracket (10) as per diagram.
6. After attaching telescopic downspout (27), secure (through handle) and control rope with chain and snap lock before transport.
7. Place auger in transport bracket wedge lock receiver (9) and tighten using lock bolt (5), as well tighten the lock bolt (5) on the swing arm. Rotate hopper to eliminate dirt and water buildup. *Fig. B*

**NOTE:**

Wedge lock tab on auger may have to be re-located to fit into transport bracket.

### OPERATING INSTRUCTIONS:

Release lock bolts on transport bracket wedge lock and swing arm. Swing auger into filling position so that auger spout is in the center of drill and directly over handrail. *Fig. C*

To fill drill, simply move along seed box with telescopic downspout. For transporting, follow steps 6 & 7 above.

**NOTE:**

Before transporting, make sure both the wedge lock and swing arm lock bolts are tightened.

**\* IMPORTANT \***  
**TIGHTEN LOCK  
SECURELY**  
**BEFORE TRANSPORTING**

**DAMAGE CAUSED TO AUGER  
OR HARDWARE DUE TO  
UNSECURED LOCKS, WILL NOT  
BE COVERED BY WARRANTY.**



Fig. A

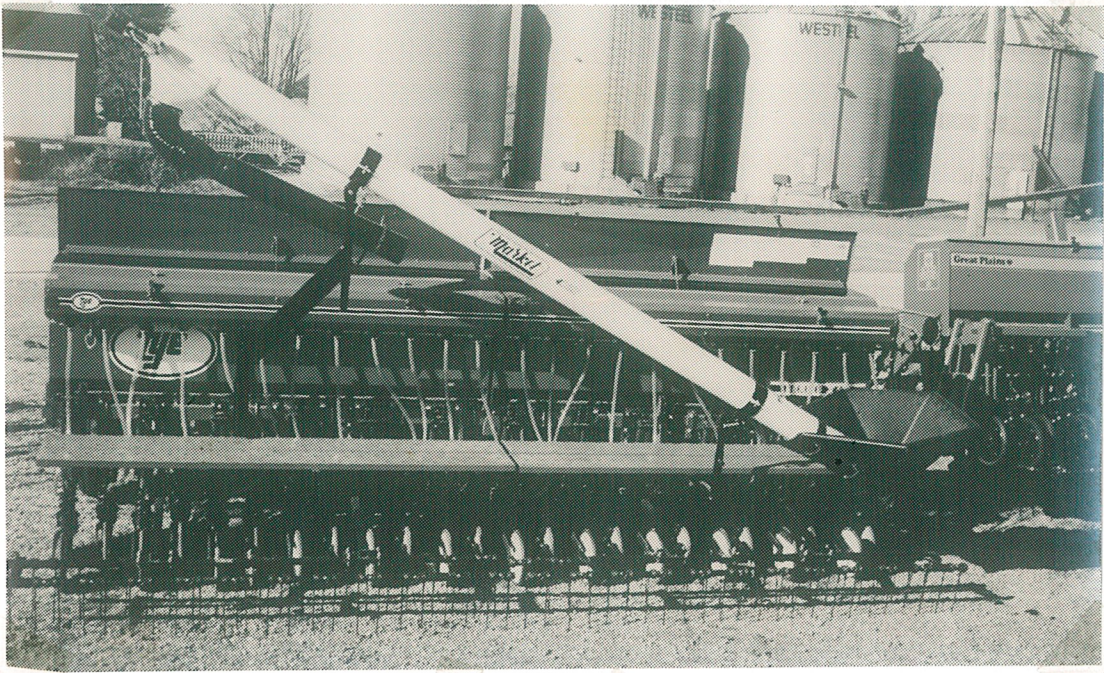


Fig. C

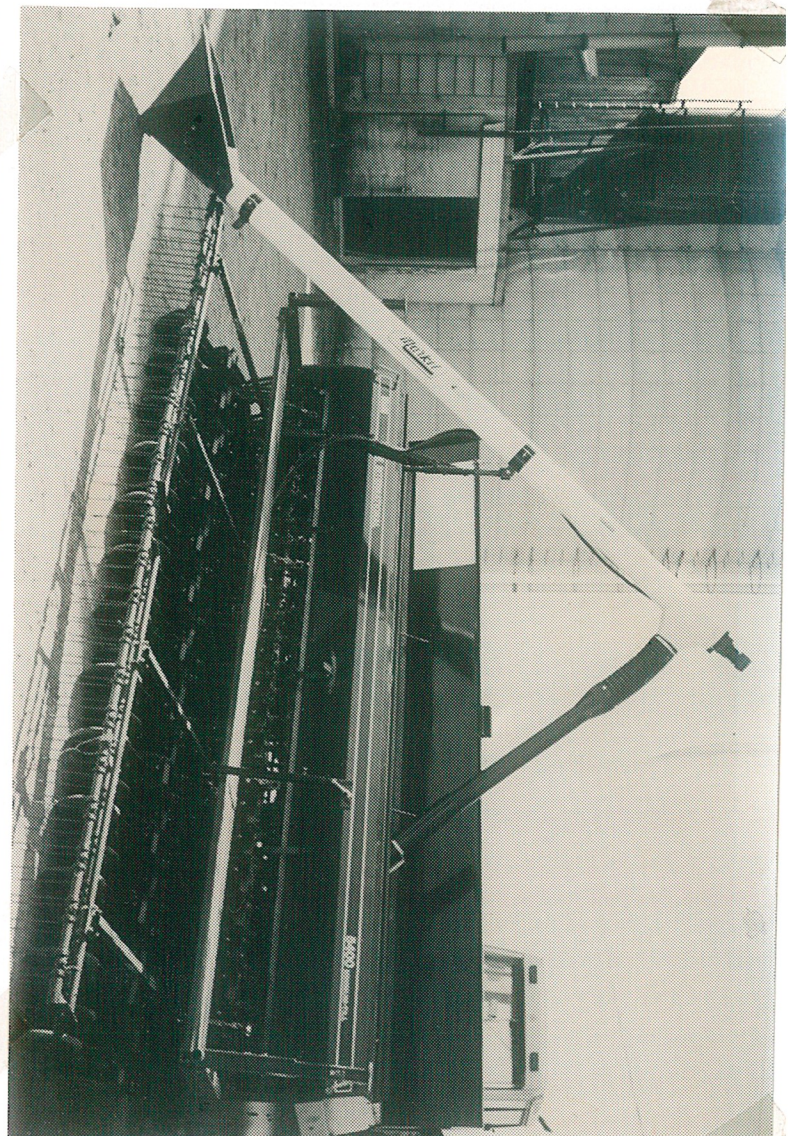
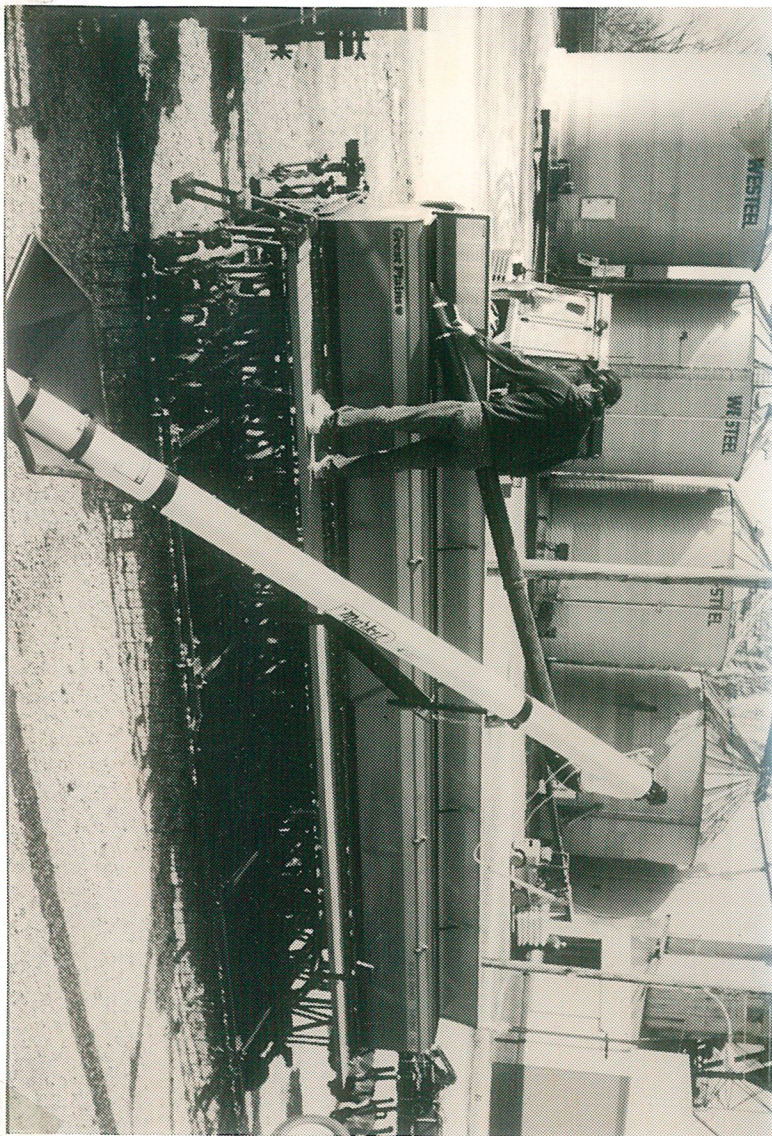


Fig. B





*Fig. B*



*Fig. A*



1997

## SINGLE AUGER SEED FILL MOUNTING INSTRUCTIONS FOR 3 PT MINIMUM TILL DRILLS

1. Mount frame weldment as shown in diagram.
2. Slide offset swing arm (12) into auger frame weldment, taking caution not to damage plastic sleeve (1) inside 2 ½" x 10" bushing.
3. Mount auger by inserting the height adjuster (3) into offset swing arm. *Fig. A*
4. After attaching telescopic downspout (27), secure (through handle) and control rope with chain and snap lock before transport.
5. Swing auger into filling position so that auger spout (26) is in the center of drill and directly over rear of cat walk. *Fig. A* Adjust stop collar (4) on offset swing arm so that stop is against tab on frame weldment.
6. Swing auger into transport position making sure motor is not past end of drill, mount transport bracket (17) in desired location on catwalk (drill 4 - ½" holes using transport bracket as template). Use bolts and backer plates supplied, ½" flat washers are used as spacers between catwalk and mounting plate (see diagram).
7. Place auger in transport bracket wedge lock receiver (9) and tighten using lock bolt (5) as well tighten the lock bolt (5) on the offset swing arm. Rotate hopper to eliminate dirt and water buildup. *Fig. B*

### OPERATING INSTRUCTIONS:

Release lock bolts on transport bracket wedge lock and offset swing arm. Swing auger into filling position so that auger spout is in the center of drill and directly over rear of catwalk. *Fig. A*

To fill drill, simply move along seed box with telescopic downspout. For transporting, follow steps 4 & 7 above.

#### NOTE:

Before transporting, make sure both the wedge lock and offset swing arm lock bolts are tightened.

**\* IMPORTANT \***  
**TIGHTEN LOCK  
SECURELY  
BEFORE TRANSPORTING**

**DAMAGE CAUSED TO AUGER  
OR HARDWARE DUE TO  
UNSECURED LOCKS, WILL NOT  
BE COVERED BY WARRANTY.**

January 1, 2004

## MOUNTING INSTRUCTIONS UPDATE FOR THE FOLLOWING DRILLS:

### GREAT PLAINS 1205

Mounts on catwalk.

1. Find center of catwalk.
2. Mount offset swing arm holder between 37" - 52" to the left of center (try to keep to the rear of catwalk and close to a brace).
3. Mount transport bracket to the right of center to suit your requirements. (Try to keep center auger across rear of drill for transport).

### UNITED FARM TOOLS

Mounts on 4 x 6 rear tool bar.

Follow John Deere instructions.

### CRUSTBUSTER 3400

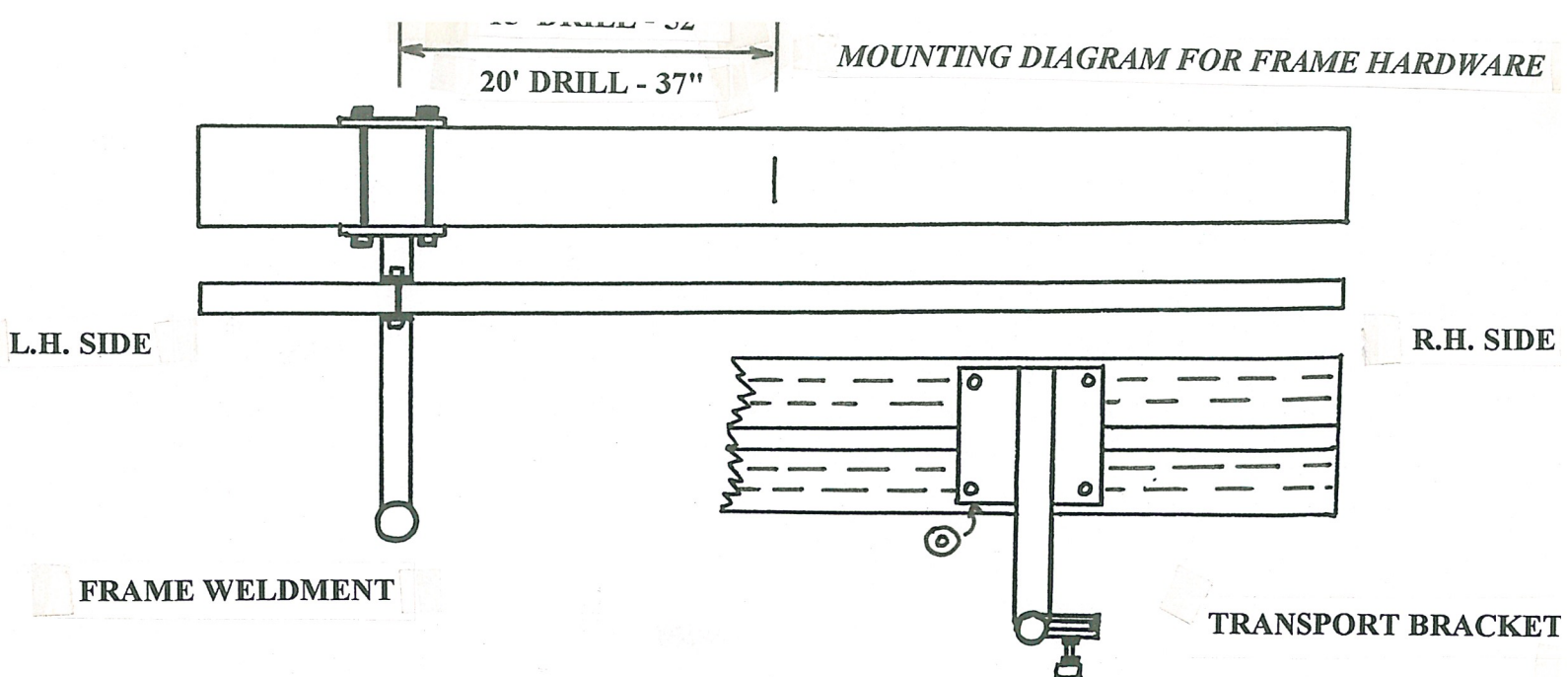
Mounts on 4 x 8 main frame.

1. Find center of frame.
2. Mount frame weldment between 37" - 52" to the left of center.
3. Mount transport bracket between 37" - 52" to the right of center.
4. Mount swing arm according to John Deere instructions.

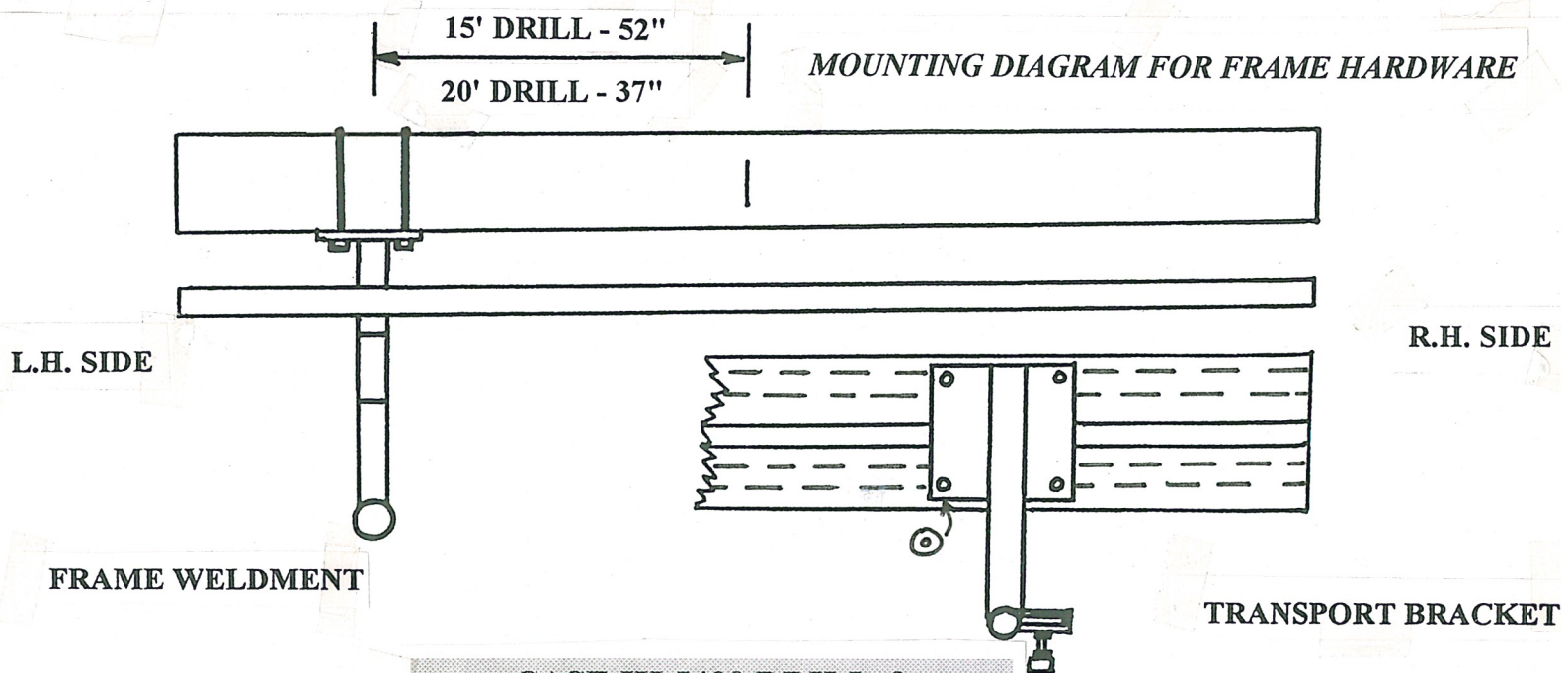
\* Use only 1/2" hydraulic hose when plumbing

\*\*Do not lead auger by telescopic downspout as it may cause stress on flexible piece.





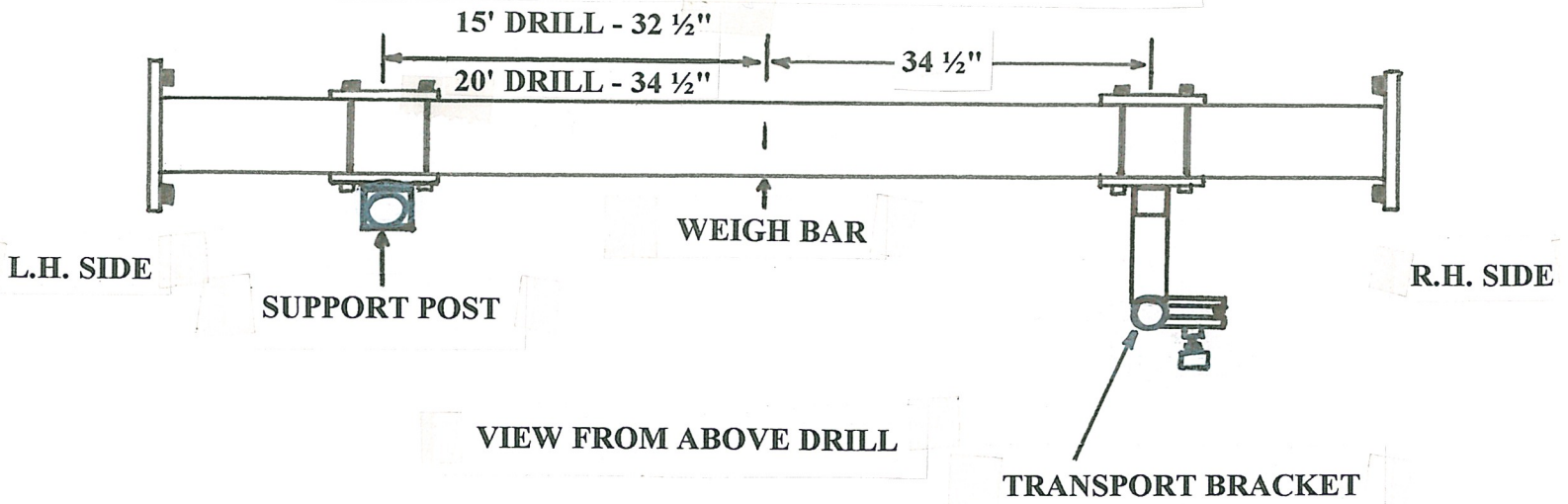
GREAT PLAINS PRE '94 1500/2000, TYE SERIES V,  
MARLISS, SUNFLOWER DRILLS



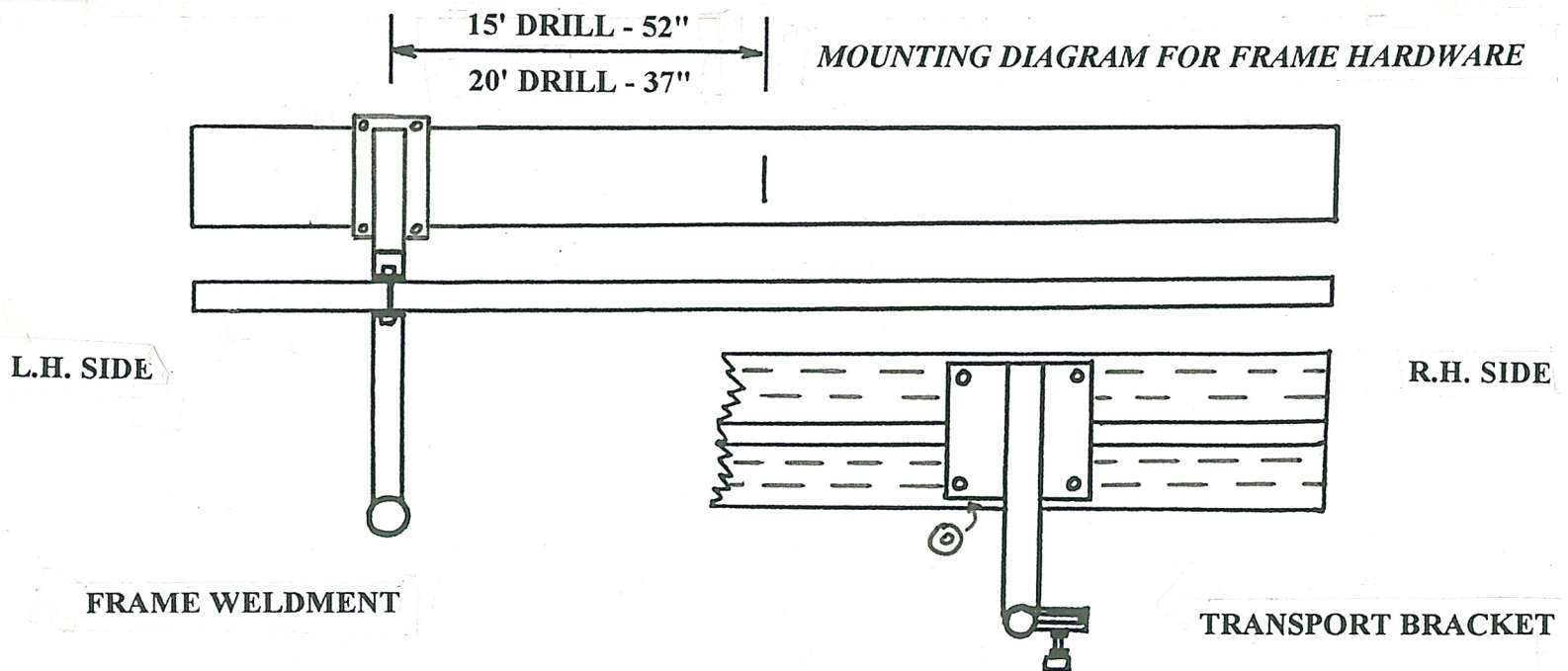
CASE IH 5400 DRILL &  
SOYBEAN SPECIAL

VIEW FROM ABOVE DRILL

# MOUNTING DIAGRAM FOR FRAME HARDWARE



## JOHN DEERE 750 / 1560 / 1590 DRILL

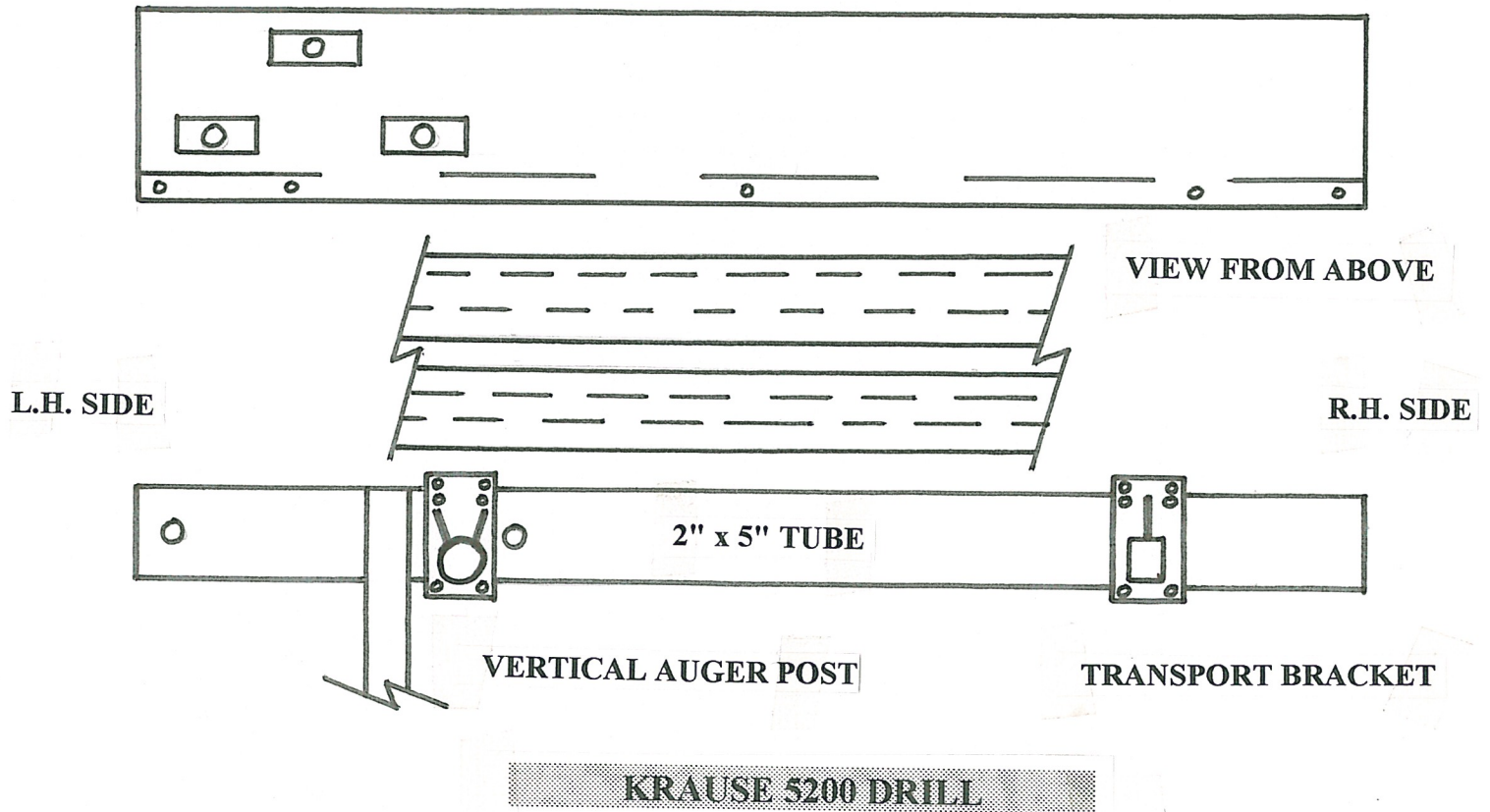


## GREAT PLAINS 1510/2010 DRILLS

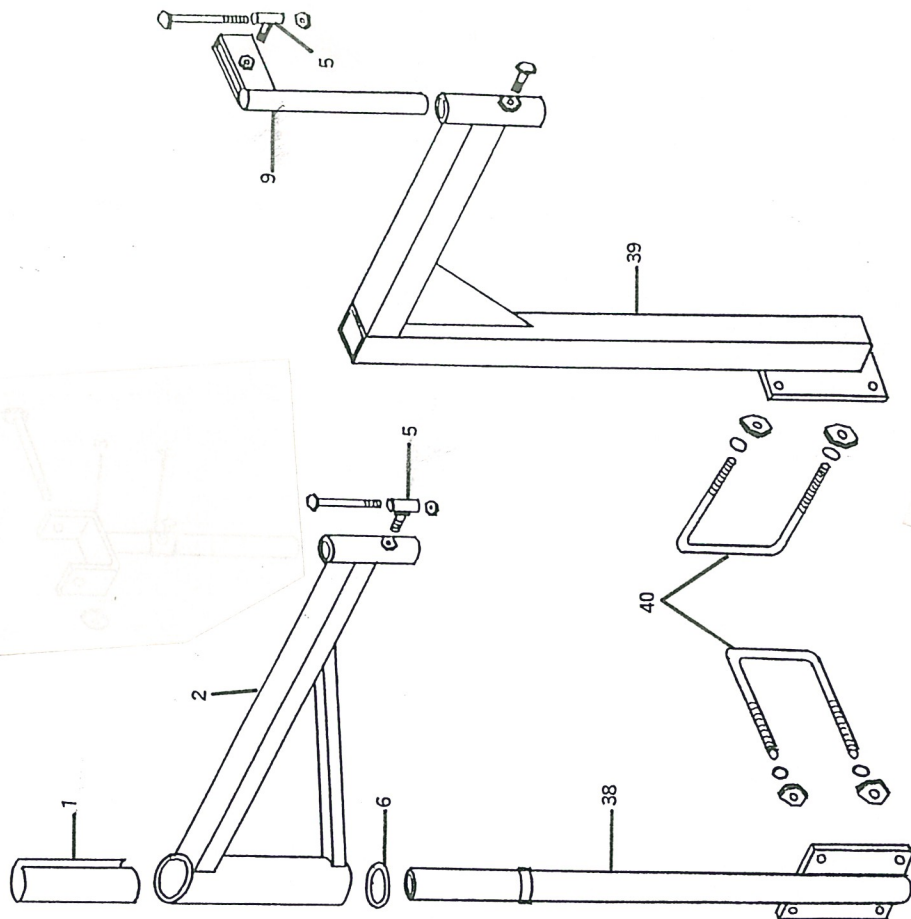
VIEW FROM ABOVE DRILL



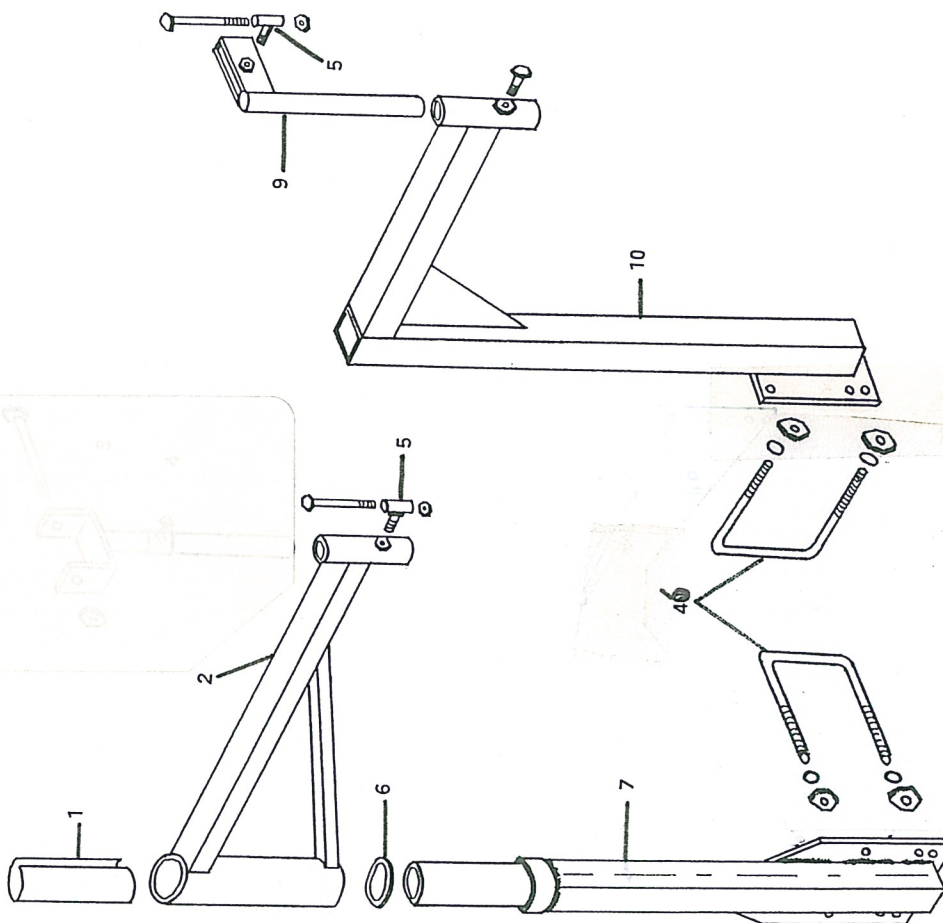
**MOUNTING DIAGRAM FOR FRAME HARDWARE**



# SINGLE AUGER SEED FILL UFT 5015 DRILL



# SINGLE AUGER SEED FILL JD 750/1560/1590 DRILLS





# SINGLE AUGER SEED FILL GP 1205 NT DRILL

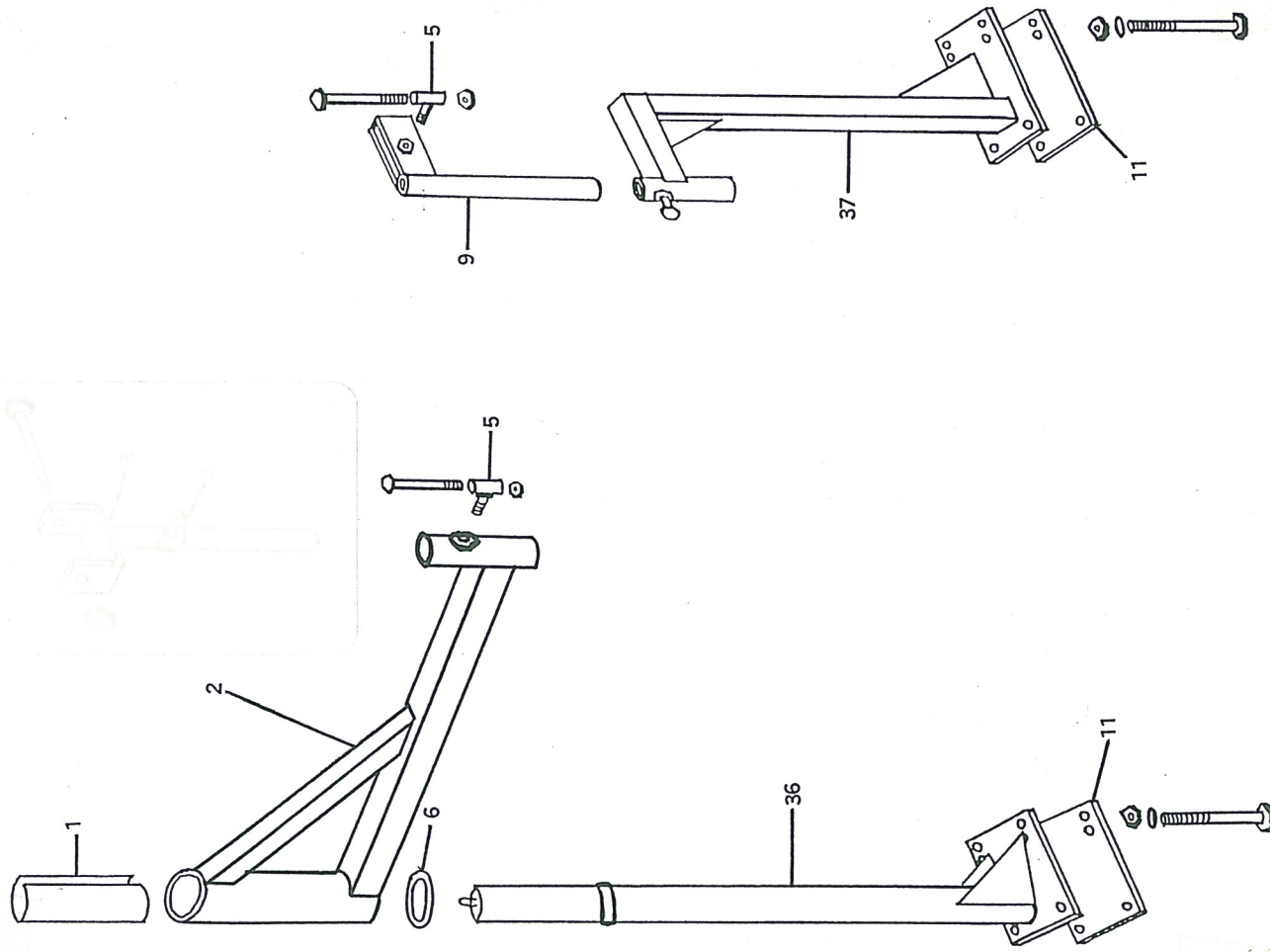
# SINGLE AUGER SEED FILL CIH 5400 / \* SOYBEAN SPECIAL DRILLS

This diagram shows the exploded view of the GP 1205 NT Drill assembly. The main components are labeled as follows: 1 (Auger), 13 (Motor), 12 (Drive Shaft), 9 (Bracket), 5 (Pin), 17 (Bracket), 18 (Bracket), 14D (Main Frame), and 45 (Bracket). The diagram illustrates how these parts fit together to form the complete drill assembly.

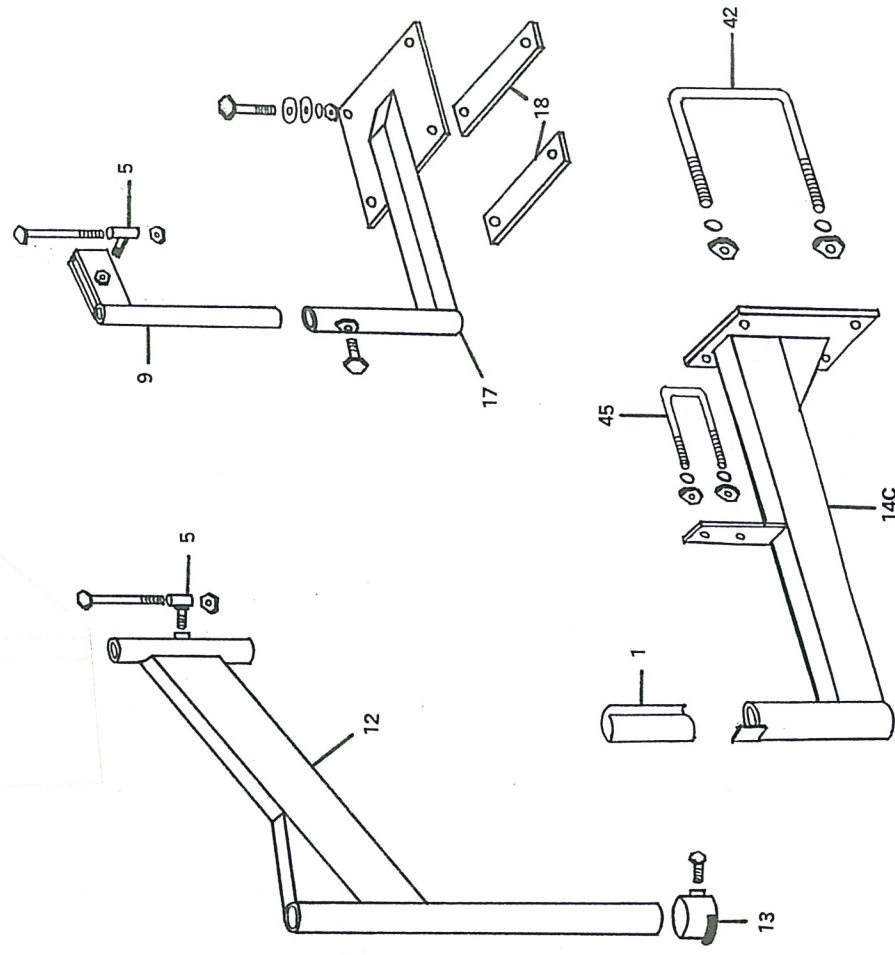
This diagram shows the exploded view of the CIH 5400 / Soybean Special Drills assembly. The main components are labeled as follows: 1 (Auger), 13 (Motor), 12 (Drive Shaft), 9 (Bracket), 5 (Pin), 17 (Bracket), 18 (Bracket), 14B (Main Frame), and 42 (Bracket). The diagram illustrates how these parts fit together to form the complete drill assembly.

\* NEEDS ADDITIONAL SUB FRAME FOR MOUNTING

# SINGLE AUGER SEED FILL KRAUSE 5200 DRILL

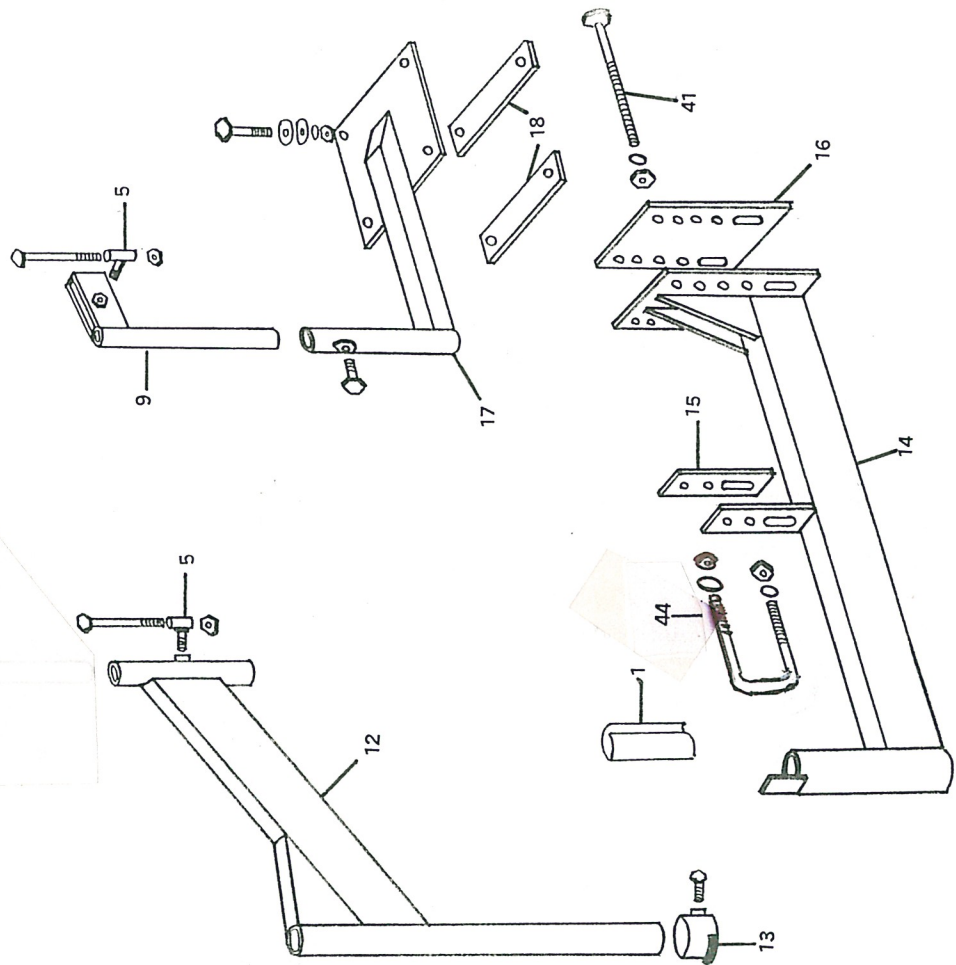


# SINGLE AUGER SEED FILL SUNFLOWER/BEST 9410/ 9411 DRILL

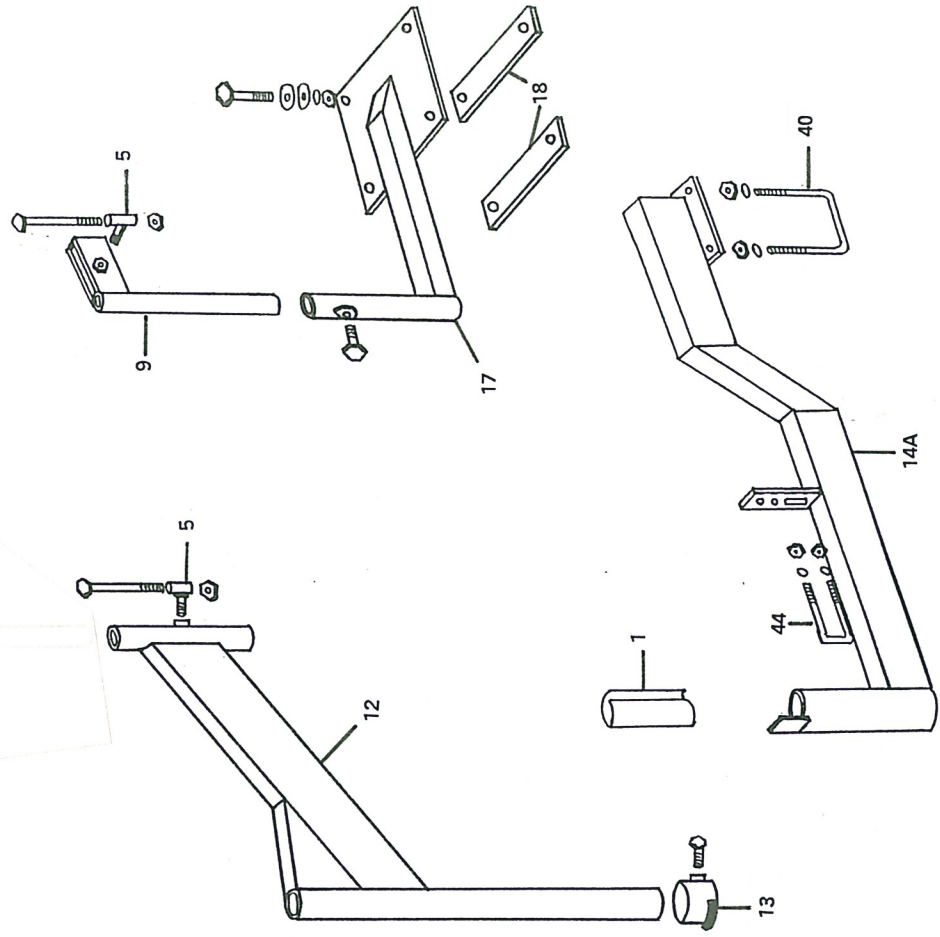




**SINGLE AUGER SEED FILL GP 1500/  
2000 & TYE SERIES V DRILL**



**SINGLE AUGER SEED FILL GP  
1510/2010 DRILL**







## SINGLE AUGER SEED-FILL PARTS LIST

REF#	PROD. #	DESCRIPTION
1	1485	9 ½" UHMW PLASTIC SLEEVE
2	564	SWING ARM (JD, UFT, KRAUSE)
3	1293	HEIGHT ADJUSTER TUBE C/W COLLAR
5	1175	LOCK BOLT ASSEMBLY
6	783B	UHMW PLASTIC WASHER
7	824	POST (JD 750/1560/1590)
9	956	WEDGELOCK RECEIVER
10	842	TRANSPORT BRACKET (JD 750/1560/1590)
12	881	OFFSET SWING ARM (3 PT. HITCH DRILLS) specify make & model #
13	1337	LOCK GUIDE
14	1185	FRAME WELDMENT (3 PT. HITCH DRILLS)specify make & model #
17	1419	TRANSPORT BRACKET (3 PT. HITCH DRILLS) C/W BACKER PLATES
19M	395	6 CU. INCH MOTOR (MANIFOLD MOUNT)
22M	117	VALVE (MANIFOLD MOUNT)
23	580	H-8 VALVE HANDLE
24	102	12' CONTROL ROPE
25	198	6" MOTOR PLATE
26	613	6" PLASTIC AUGER SPOUT C/W SCREWS
27	612	6" 3-STAGE (5'-10') TELESCOPING DOWNSPOUT
27A	725	6" X 18" FLEX HOSE C/W RIVETS & WASHERS      HEAVY MATERIAL (BMD) #225
27B	149	6" HOSE CLAMP
28	552	4" WIDE ½ CLAMP BAND
29	955	PIVOT ½ CLAMP BAND (COMPLETE ASSEMBLY INCLUDES #29, #28 & #3)
30	1177	CHAIN C/W SNAP
31	762	WEDGELOCK ½ CLAMP BAND C/W TAB (COMPLETE ASSEMBLY INCLUDES #31 & #28)
32	1203	HOPPER STOP
33	193	6" PVC TUBE (RAW)
34B	657	6" BRISTLE FLIGHTING specify length
34CP	742	5" CUPPED PLASTIC FLIGHTING specify length
34S	834	6" CUPPED STEEL FLIGHTING specify length
35	546	6" VERTICAL AUGER HOPPER ASSEMBLY
35A	549	6" VERTICAL AUGER HOPPER CLAMP BAND
35B	548	6" VERTICAL AUGER HOPPER SAFETY GRILLE
36		POST (KRAUSE)
37		TRANSPORT BRACKET (KRAUSE)
38		POST (UFT)
39		TRANSPORT BRACKET (UFT)
***NUTS & BOLTS SOLD SEPERATELY***		

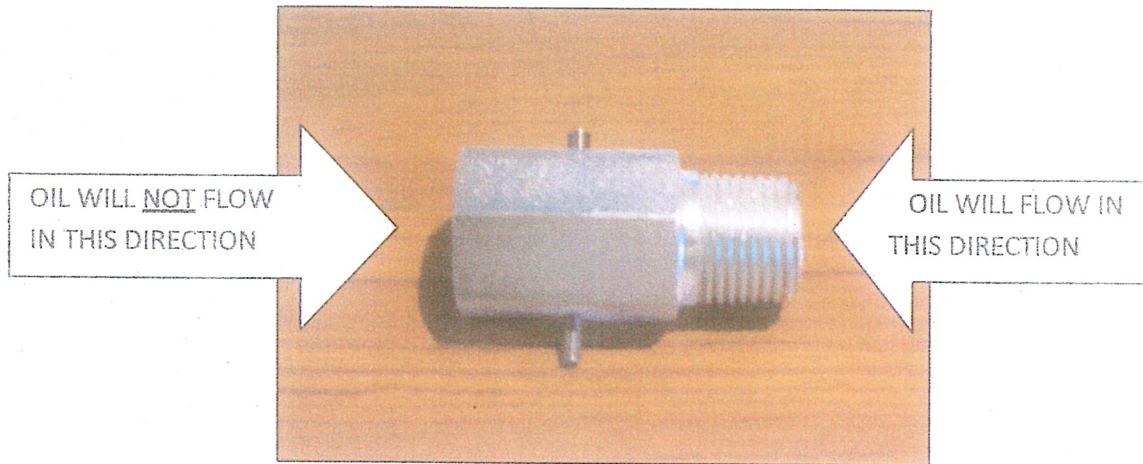
**\*\*U-BOLTS/BOLTS** specify make & model # of seed drill



## OPTIONAL VALVES FOR HYDRAULIC AUGERS

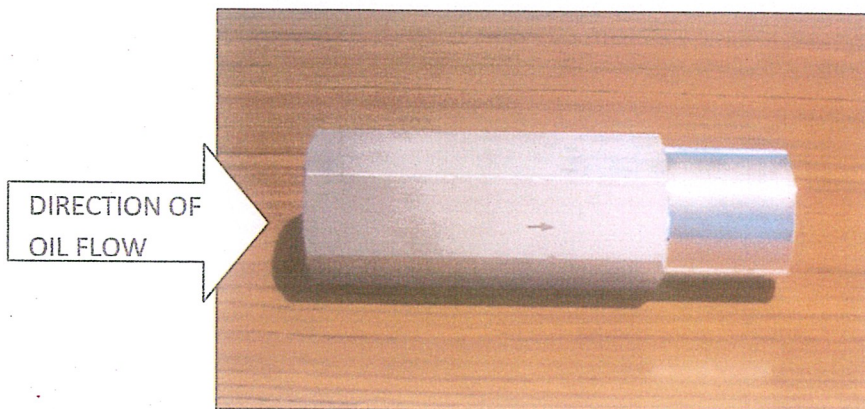
**Note:** These optional valves do not replace the shut-off valve on the auger.

A directional valve fitting can be installed to restrict the auger from running in the reverse direction. This valve should be installed on the return line, between the valve on motor and the tractor. Thread is  $\frac{1}{2}$ " NPT. **RECOMMENDED FOR AUGERS THAT SHOULD NOT BE RUN IN REVERSE, AS IT MAY CAUSE DAMAGE TO THE FLIGHTING.**



An in-line, pressure compensated, nonadjustable flow regulator valve is available for CLOSED CENTER HYDRAULIC SYSTEMS. In the controlled direction, this regulator will maintain a constant flow rate of 10 GPM. This valve should be installed on the pressure line, between the tractor and the valve on motor. Thread is  $\frac{3}{4}$ " NPTF (must be reduced to  $\frac{1}{2}$ " )

**RECOMMENDED FOR AUGERS OPERATED BY LARGER TRACTORS WITH LARGER HYDRAULIC OUTPUT.**



**Augers operate best at 10-12 GPM & 1200-1500 PSI.**

**Market Farm Equipment Ltd. RR# 1 Dashwood, Ontario, Canada N0M 1N0**  
**E-Mail [mfeltd@execulink.com](mailto:mfeltd@execulink.com) Web-Site [www.marketfarmequipment.com](http://www.marketfarmequipment.com)**



# IMPORTANT

YOUR AUGERS DOWNSPOUT SHOULD NEVER BE SET DOWN OR LEFT UNATTENDED WHILE THE AUGER IS RUNNING.

MATERIAL CAN BUILD UP QUICKLY CAUSING THE DOWNSPOUT AND AUGER TO PLUG. THIS CAN DAMAGE THE AUGERS FLIGHTING AND MOTOR.

ALWAYS TURN AUGER OFF BEFORE LEAVING THE DOWNSPOUT TO ATTEND TO OTHER MATTERS.



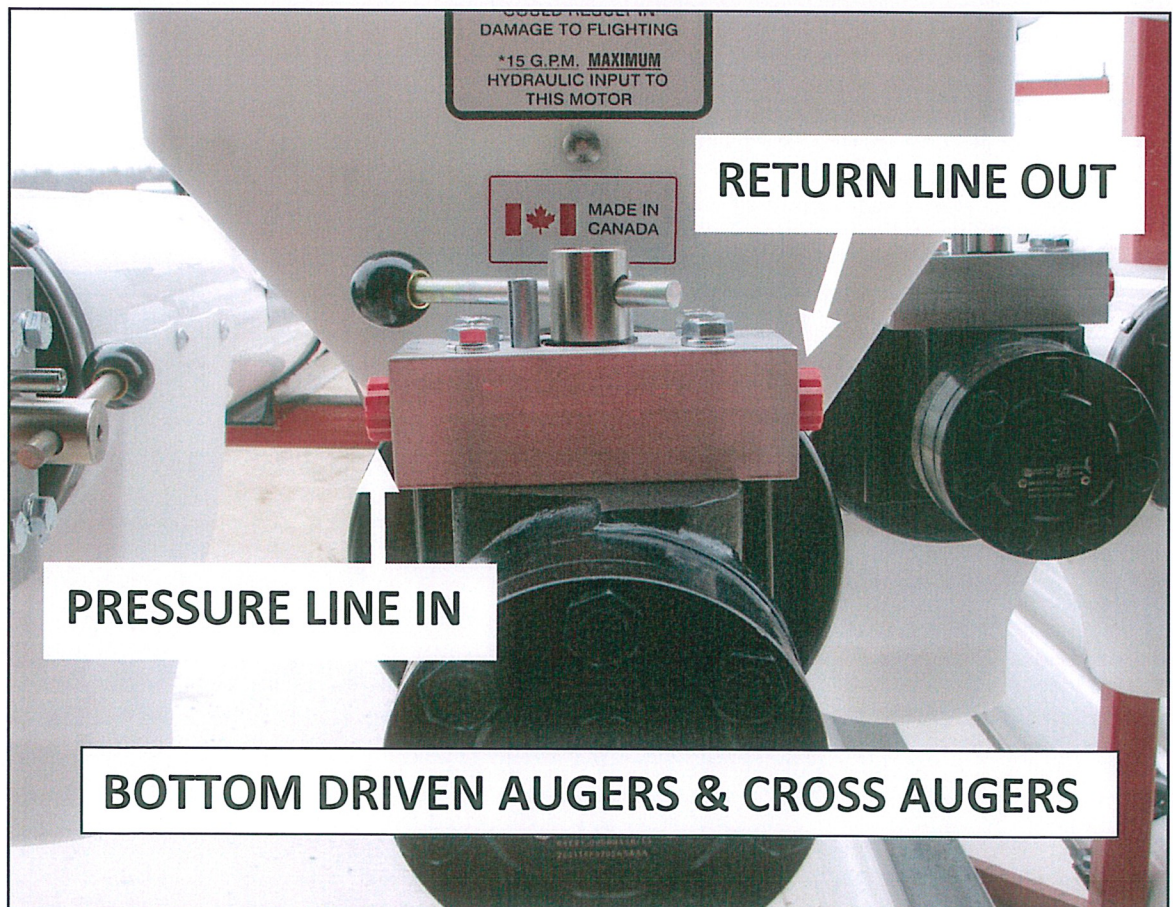


**TOP DRIVEN AUGERS**

**RETURN LINE OUT**

**VALVE IN CLOSED POSITION**

**PRESSURE LINE IN**



**PRESSURE LINE IN**

**RETURN LINE OUT**

**BOTTOM DRIVEN AUGERS & CROSS AUGERS**