



**OPERATOR'S MANUAL
SET-UP INSTRUCTIONS
&
PARTS LIST**

**14' SINGLE AUGER SEED-FILL
JD 1690/1890/1990**



MARKET FARM EQUIPMENT LIMITED, R.R.#1 DASHWOOD, ONTARIO, CANADA

TEL# 519-238-2301 FAX# 519-238-6044 E-MAIL: mfeltd@execulink.com

www.marketfarmequipment.com

"SERVING THE FARM INDUSTRY SINCE 1962"

WARRANTY PROCEDURE

MARKET FARM EQUIPMENT WARRANTS THEIR MANUFACTURED PRODUCTS TO BE FREE FROM DEFECTS IN MATERIAL AND WORKMANSHIP FOR A PERIOD OF ONE (1) YEAR AFTER THE DATE OF PURCHASE TO THE FIRST END USER AND IS SUBJECT TO THE FOLLOWING CONDITIONS.

1. Damage caused by improper use, negligence, or operation beyond rated capacity, improper set-up, adjustment, or any unauthorized modifications made by the dealer or customer, shall void this warranty.
2. Notification of damage or warranty claims must be submitted to Market Farm Equipment (M.F.E.) within seven (7) days of the date of failure.
3. All defective parts must be made available by the dealer, for inspection by M.F.E. if required, and returned at the dealer's expense.
4. All warranty claims must be approved by M.F.E.
5. The labour and freight required to replace defective parts is not reimbursable.
6. Exchange, credit or warranty status will be based on the results of the inspection of damaged items by the manufacturer.
7. Credit will be issued if and when the warranty claim is approved and **MUST NOT** be deducted from the account by the dealer.
8. Products and/or parts not manufactured by M.F.E. are subject to their own manufacturer's warranty conditions.

WARRANTY CONSIDERATION IS ONLY VALID WHEN THE WARRANTY REGISTRATION FORM HAS BEEN RECEIVED BY MARKET FARM EQUIPMENT.

WARRANTY REGISTRATION

MARKET FARM EQUIPMENT LIMITED
71796A BLUEWATER HIGHWAY, ONTARIO, CANADA, N0M 1N0
Fax: 519-238-6044 E-mail: mfeltd@execulink.com

Purchaser's warranty protection on this equipment is valid only when this registration form is completed by the purchaser and returned to Market Farm Equipment Limited.

Date of purchase: _____

Type of equipment: _____

Model number: _____ Serial number: _____

PURCHASER'S SIGNATURE INDICATES:

- Acceptance of equipment, fully assembled () unassembled ()
- Receipt of operator's manual
- Clear understanding of warranty
- Receipt of instructions on special safety equipment available
- Receipt of instructions on safe and proper operating procedures

PURCHASER:

Name: _____

Signature: _____

Mailing Address: _____

Prov./State: _____ Postal/Zip Code: _____

Telephone number: _____

Purchased from: _____

THIS WARRANTY MUST BE VALIDATED BY THE MANUFACTURER

It is valid only when a copy of the registration has been received by the manufacturer at address shown.

MARKET FARM EQUIPMENT LIMITED

EXPRESS WARRANTY

Market Farm Equipment Limited warrants against defects in construction and materials for a period of ONE year. We reserve the right to inspect and decide whether material or construction was faulty, or whether abuse or accident voids our guarantee.

This warranty does not cover a component which fails, malfunctions or is damaged as a result of (I) improper modification or repair, (II) accident, abuse or improper use, including loading beyond the specified maximum weights and requirements (III) improper or insufficient maintenance, or (IV) normal wear and tear.

THIS WARRANTY IS EXPRESSLY IN LIEU OF ALL OTHER WARRANTIES OR CONDITIONS, EXPRESS, IMPLIED OR STATUTORY, INCLUDING ANY IMPLIED WARRANTY OF MERCHANTABILITY OR FITNESS FOR A PARTICULAR PURPOSE.

In no way shall Market Farm Equipment Limited be liable for special, direct, incidental or consequential damages of any kind, including but not limited to labour charges.

The exclusive remedy under this warranty shall be repair or replacement of the defective component at Market Farm Equipment Limited's option. This is the entire agreement between Market Farm Equipment Limited and the owner about warranty. NO M.F.E. Ltd. employee or dealer is authorized to make additional warranty on behalf of Market Farm Equipment Limited.

(Fill in the following for future reference)

Serial number: _____

Date of purchase: _____

Purchased from: _____

SAFETY INFORMATION

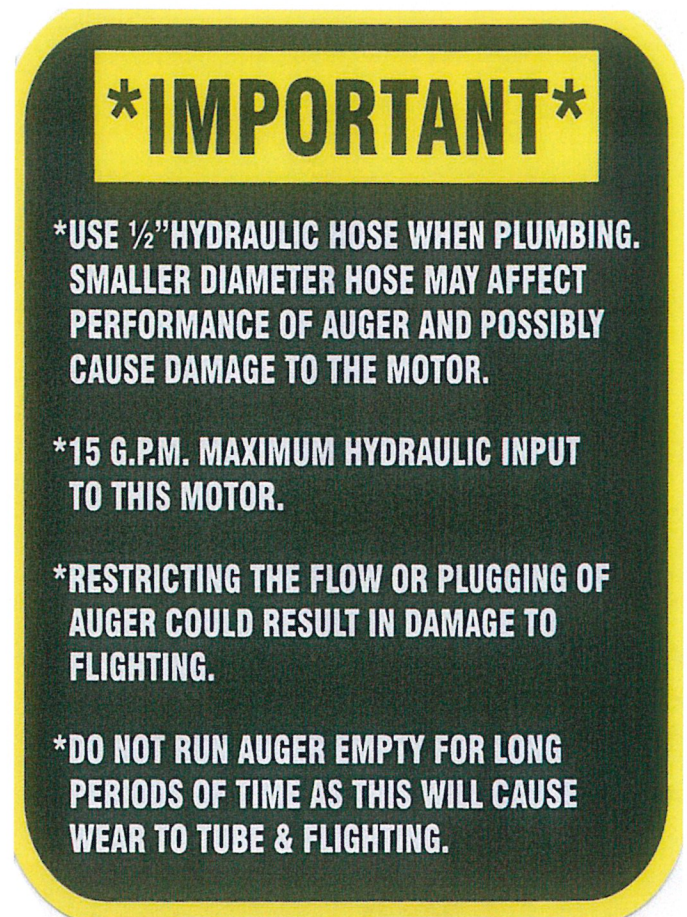
- Before using auger READ and UNDERSTAND SAFETY INSTRUCTIONS.
- After hydraulic lines are connected, run auger empty to ensure the flighting is rotating in the proper direction. (if ran backwards, damage may occur)
- Auger should be empty when moving or transporting.
- Hydraulic oil leaking under pressure can cause injury. Make sure all hydraulic connections are tight. Before disconnecting hydraulic lines, relieve pressure.
- Do not adjust, clean or service auger while it is running.
- Keep all safety shields in place. Replace any safety decals that become lost or damaged.
- Do not operate the auger in a manner that it was not intended for.
- When transporting, always keep auger in its lowest position.

HYDRAULIC SYSTEM OPERATING RESTRICTIONS

MAXIMUM FLOW – 20 G.P.M. MAXIMUM PRESSURE – 2500 P.S.I.

MAXIMUM FLOW AND MAXIMUM PRESSURE conditions MUST NOT occur simultaneously. Damage will occur and warranty will be void. Use only ½" hydraulic hose when plumbing. Smaller hose will create heat that will burn out the hydraulic motor and warranty will be void.

Do not tee into hydraulic lift cylinders on planters or drills.



SINGLE AUGER SEED FILL MOUNTING INSTRUCTIONS FOR **John Deere 1690 / 1890 / 1990**

1. Install main post weldment on to catwalk using 1/2" bolts, nuts and backer plates as shown in dia. 1 & 2
2. Slide swing arm on to post weldment as shown in dia. 3
3. Mount hopper to bottom of the auger by removing the first clamp band then sliding hopper on until second clamp band rests up against the plastic stop on the auger. Re-install first clamp band. Clamp bands should be snug but not too tight as to restrict the rotation of the hopper for clean-out.
4. Mount auger by inserting the height adjuster into the swing arm.
5. To install the transport bracket, you must first remove the 4 5/16" bolts holding the catwalk railing as shown in dia. 4. Slide the transport bracket in behind the railing. Use new 5/16" bolts and nuts supplied to re-attach the catwalk railing bracket. 2 new 1/2" holes will have to be drilled. Use transport bracket as template. Bolt using 1/2" bolts and nuts supplied.
6. Attach 4' downspout to the auger spout using the HS-96 hose clamp supplied.
7. Place auger in the transport bracket wedge lock receiver and tighten using lock bolt. Also tighten lock bolt on the swing arm. Rotate hopper to eliminate dirt and water buildup.

NOTE: Although the height adjuster assembly and the wedge lock tab assembly are mounted on the auger when shipped some adjustment may be required to achieve proper discharge height and transportation width.

OPERATING INSTRUCTIONS

1. Release lock bolts on transport bracket wedge lock and the swing arm. Rotate hopper to an upright position. Swing auger into fill position so that the down spout reaches the seedbox.
2. To fill seed drill, turn the auger on using the shut-off valve located on the motor. Move the downspout to ensure an even fill.
3. For transporting, follow instruction 7. above.

NOTE: Before transporting, make sure both wedge lock and swing arm lock bolts are tight. Failure to do this may cause stress on auger supports.

DIAGRAM: 1

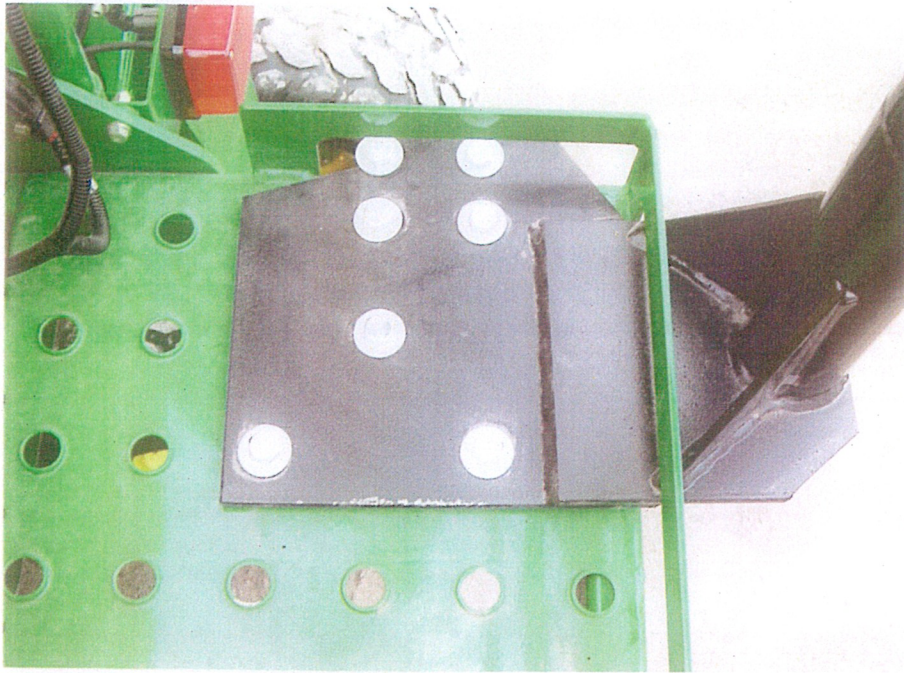


DIAGRAM: 2

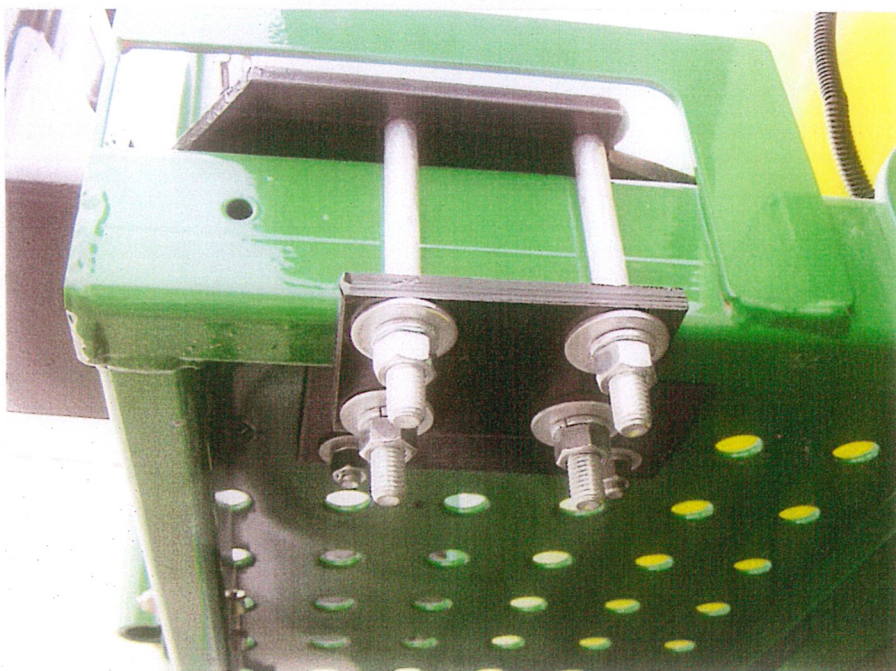
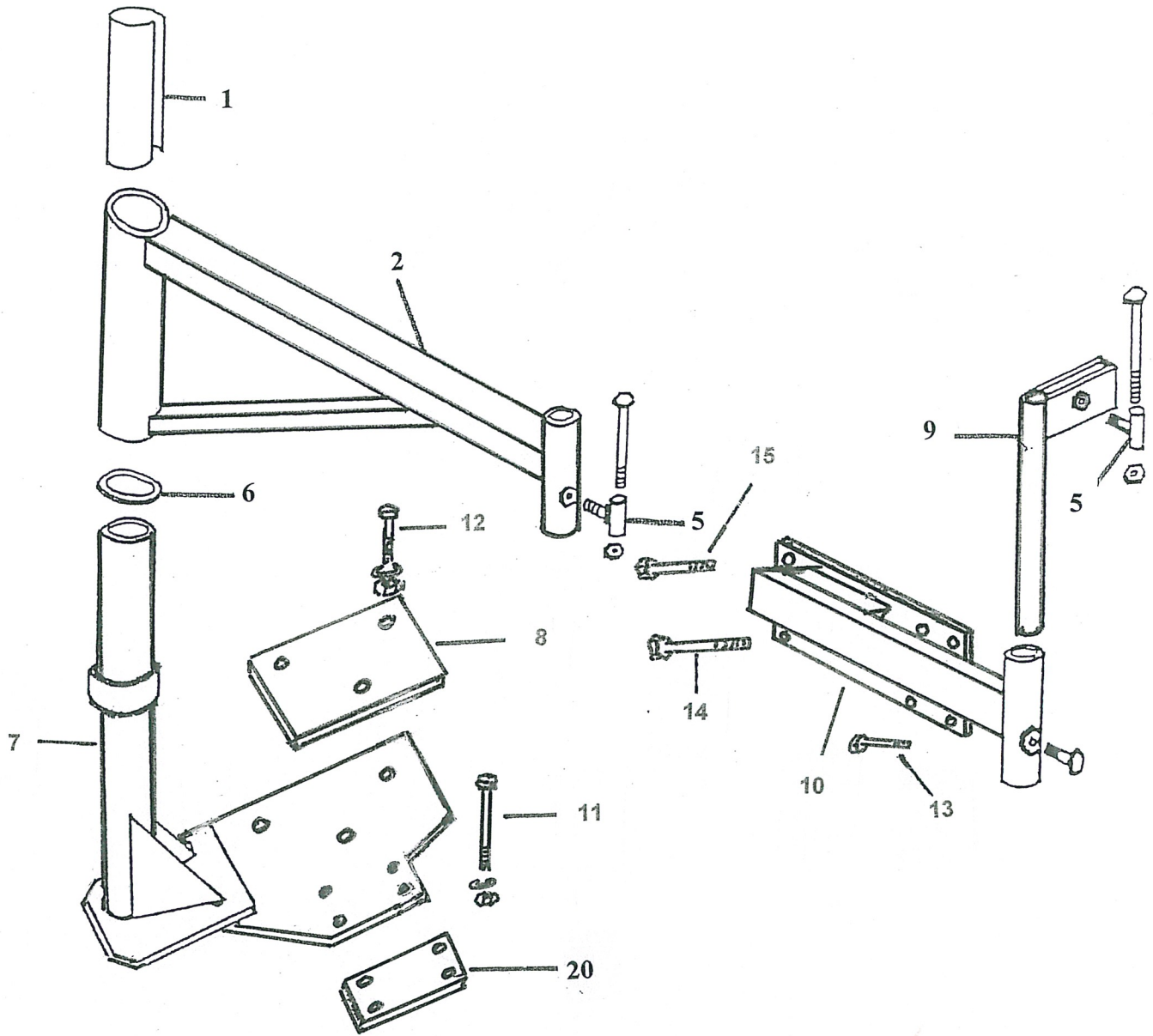


DIAGRAM: 3



DIAGRAM: 4





**14' SINGLE AUGER SEED FILL
JOHN DEERE 1690 / 1890 / 1990**



JOHN DEERE 1690 / 1890 / 1990

14' SINGLE AUGER SEED-FILL PARTS LIST

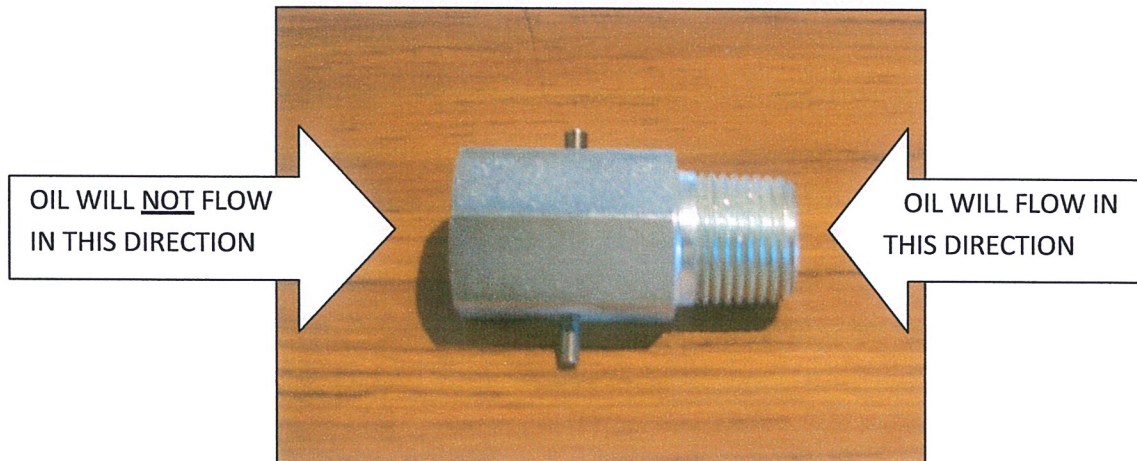
JOHN DEERE 169/1890/1990

REF#	PROD. #	DESCRIPTION
1	1485	9 ½" UHMW PLASTIC SLEEVE
2	564	SWING ARM (JD, UFT, KRAUSE)
3	1293	HEIGHT ADJUSTER TUBE C/W COLLAR
5	1175	LOCK BOLT ASSEMBLY
6	783B	UHMW PLASTIC WASHER
7	1186	FRAME WELDMENT (JD 1690/1890/1990)
8		3 BOLT BACKER PLATE
9	956	WEDGELOCK RECEIVER
10	1187	TRANSPORT BRACKET (JD 1690/1890/1990)
11		5" X ½" BOLT, LOCK WASHER & NUT
12		2½" X ½" BOLT, LOCK WASHER & NUT
13		2½" X 5/16" BOLT, LOCK WASHER & NUT
13A		1½" X 5/16" BOLT, LOCK WASHER & NUT
14		3" X ½" BOLT, LOCK WASHER & NUT
15		1½" X ½" BOLT, LOCK WASHER & NUT
19	457	6 CU. INCH MOTOR (OLD STYLE)
19M	395	6 CU. INCH MOTOR (MANIFOLD MOUNT)
22	130	"H" VALVE (OLD STYLE)
22M	117	VALVE (MANIFOLD MOUNT)
23	580	H-8 VALVE HANDLE
24	102	12' CONTROL ROPE
25	198	6" MOTOR PLATE
26	613	6" PLASTIC AUGER SPOUT C/W SCREWS
27A	148X4	6" DOWNSPOUT (4' LONG)
27B	149	6" HOSE CLAMP
28	552	4" WIDE ½ CLAMP BAND
29	955	PIVOT ½ CLAMP BAND (COMPLETE ASSEMBLY INCLUDES #29, #28 & #3)
31	762	WEDGELOCK ½ CLAMP BAND C/W TAB (COMPLETE ASSEMBLY INCLUDES #31 & #28)
32	1203	HOPPER STOP
33	193	6" PVC TUBE (RAW)
34B	657	6" BRISTLE FLIGHTING specify length
34CP	742	5" CUPPED PLASTIC FLIGHTING specify length
34S	834	6" CUPPED STEEL FLIGHTING specify length
35	546	6" VERTICAL AUGER HOPPER ASSEMBLY
35A	549	6" VERTICAL AUGER HOPPER CLAMP BAND
35B	548	6" VERTICAL AUGER HOPPER SAFETY GRILLE
NUTS & BOLTS SOLD SEPERATELY		

OPTIONAL VALVES FOR HYDRAULIC AUGERS

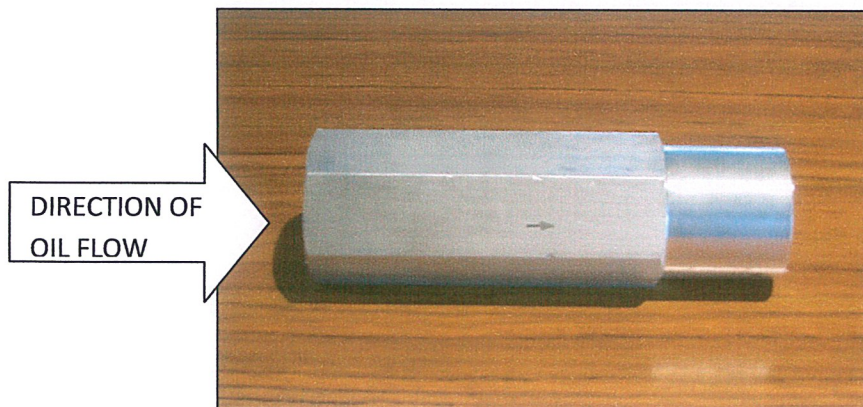
Note: These optional valves do not replace the shut-off valve on the auger.

A directional valve fitting can be installed to restrict the auger from running in the reverse direction. This valve should be installed on the return line, between the valve on motor and the tractor. Thread is $\frac{1}{2}$ " NPT. **RECOMMENDED FOR AUGERS THAT SHOULD NOT BE RUN IN REVERSE, AS IT MAY CAUSE DAMAGE TO THE FLIGHTING.**



An in-line, pressure compensated, nonadjustable flow regulator valve is available for CLOSED CENTER HYDRAULIC SYSTEMS. In the controlled direction, this regulator will maintain a constant flow rate of 10 GPM. This valve should be installed on the pressure line, between the tractor and the valve on motor. Thread is $\frac{3}{4}$ " NPTF (must be reduced to $\frac{1}{2}$ "

RECOMMENDED FOR AUGERS OPERATED BY LARGER TRACTORS WITH LARGER HYDRAULIC OUTPUT.



Augers operate best at 10-12 GPM & 1200-1500 PSI.

Market Farm Equipment Ltd. RR# 1 Dashwood, Ontario, Canada N0M 1N0
E-Mail mfeltd@execulink.com Web-Site www.marketfarmequipment.com

IMPORTANT

YOUR AUGERS DOWNSPOUT SHOULD NEVER BE SET DOWN OR LEFT UNATTENDED WHILE THE AUGER IS RUNNING.

MATERIAL CAN BUILD UP QUICKLY CAUSING THE DOWNSPOUT AND AUGER TO PLUG. THIS CAN DAMAGE THE AUGERS FLIGHTING AND MOTOR.

ALWAYS TURN AUGER OFF BEFORE LEAVING THE DOWNSPOUT TO ATTEND TO OTHER MATTERS.



IMPORTANT OPERATING INSTRUCTIONS

- 1: NEVER LEAVE THE DOWNSPOUT (TELESCOPING OR FLEX) UNATTENDED WHILE THE AUGER IS RUNNING. IF IT IS NECESSARY TO LEAVE THE DOWNSPOUT, SHUT AUGER OFF.**
- 2: NEVER HOLD THE DOWNSPOUT (TELESCOPING OR FLEX) DOWN TOO LOW. THE MATERIAL CAN BUILD UP AND PLUG THE DISCHARGE. PLUGGING AND DAMAGE TO FLIGHTING CAN OCCUR QUICKLY. TO AVOID COSTLY DOWNTIME AND REPAIR COSTS ALWAYS BE AWARE OF HOW FULL YOUR SEED/FERTILIZER HOPPERS ARE GETTING WHILE FILLING.**
- 3: NEVER EXCEED THE MAXIMUM 15 G.P.M. HYDRAULIC INPUT. MOST AUGERS REQUIRE 9-12 GPM AT 1200-1500 PSI TO RUN PROPERLY.**
- 4: NEVER RUN AUGER EMPTY FOR LONG PERIODS OF TIME AS THIS WILL CAUSE WEAR TO THE TUBE & FLIGHTING.**
- 5: OPTIONAL FLOW REGULATOR VALVES (10 GPM MAX.) AND DIRECTIONAL VALVES ARE AVAILABLE.**
- 6: OPTIONAL ELECTRIC SOLENOID VALVES ARE AVAILABLE WITH CABLE OR REMOTE SHUT-OFF/ON FEATURES.**

PLEASE READ ALL SAFETY/IMPORTANT DECALS ON THE AUGER. UNDERSTANDING THE AUGERS REQUIREMENTS AND PROPER USE WILL ENSURE A LONG AND TROUBLE FREE LIFE FOR THE AUGER.